



THE PAVILION, KENTON ROAD, KENTON, HARROW, MIDDLESEX, HA3

**£425,000 LEASEHOLD 999 YEARS**

## TWO BEDROOM GROUND FLOOR APARTMENT

- GROUND RENT PEPPERCORN
- SERVICE CHARGE APPROX £2,540 PER ANNUM
- PARKING ADDITIONAL £30,000 PER SPACE

Kingsbury | 020 8204 0000 | [kingsbury@winkworth.co.uk](mailto:kingsbury@winkworth.co.uk)

**Winkworth**

for every step...

[winkworth.co.uk](http://winkworth.co.uk)

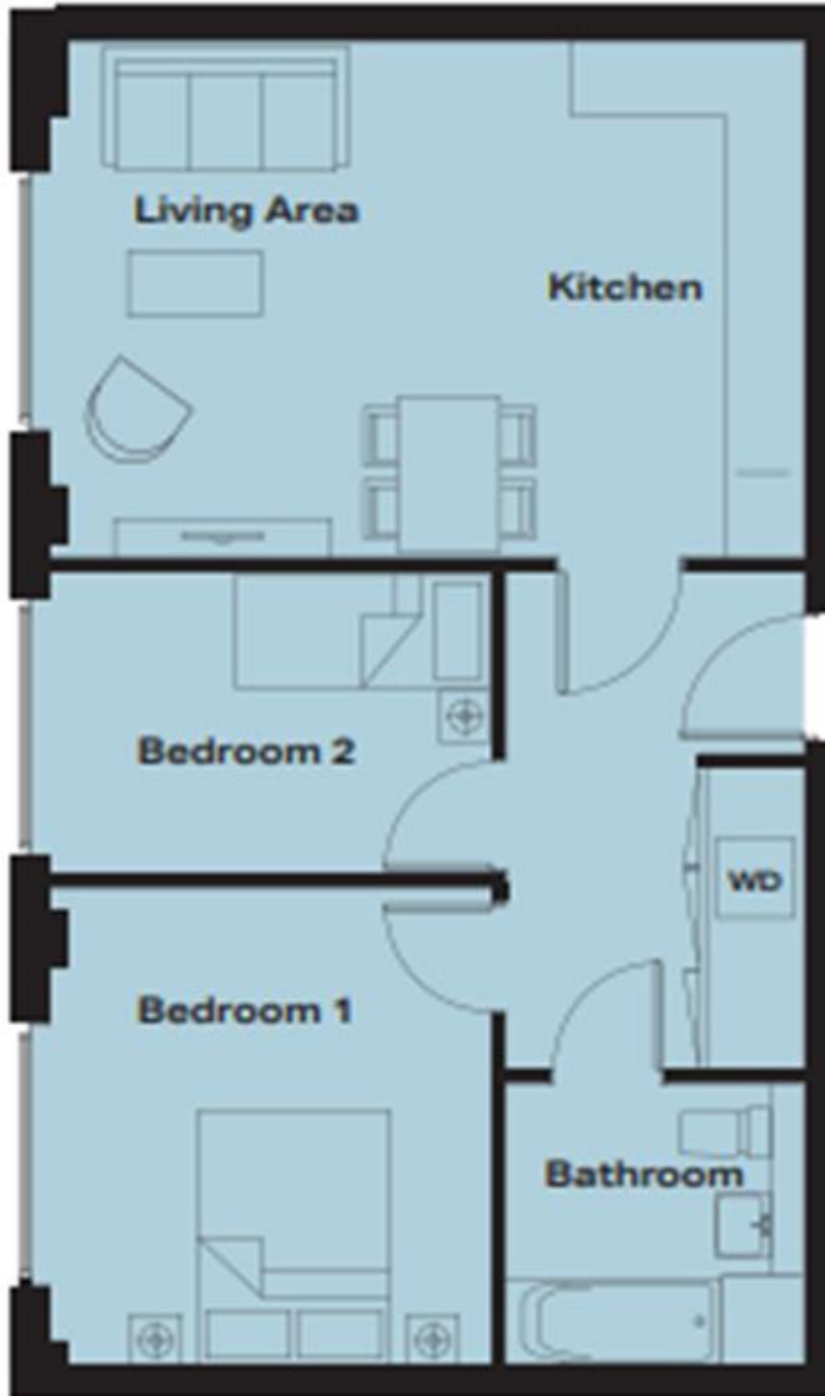


2 Bedrooms | 1 Bathroom | Ground Floor - Welcome to The Pavilion, HA3 - Kenton's latest luxury development of a brand new 1- and 2-bedroom contemporary apartments and 4-bedroom townhouses in the leafy district of Kenton. Whether you're looking for a spacious apartment within easy reach of the city, seeking a family home with contemporary features built-in, or if you are ready to downsize, The Pavilion has precisely what you need. These apartments and townhouses are purpose built, with careful consideration given to space and comfort. Each home has been designed with a contemporary feel and boasts neutral colour schemes and integrated appliances for the very best lifestyle experience with a wealth of high-grade installations to include subtle lighting, marble effect laminate worktops and splashbacks, wood-effect luxury vinyl laid in the boardwalk style in the living and dining areas and much more. The communal areas benefit from an interior designed entrance lobby, 24-hour estate CCTV, private resident's roof terrace and car parking spaces are available by separate negotiation. Enquire now to reserve your new home early and benefit from some outstanding offers from the prestigious Strawberry Star Development Company.



**Winkworth**

for every step...



This floorplan is for illustration purposes only and is not to scale. The position and size of doors, windows, appliances and other features are approximate.

**Tenure:** Leasehold

**Term:** 998 year and 7 months

**Service Charge:** £2540 per annum estimated £3.82 per sqft

**Ground Rent:** Peppercorn

**Council Tax Band:** TBC

Where no figures are shown, we have been unable to ascertain the information. All figures that are shown were correct at the time of printing.

Kingsbury | 020 8204 0000 | [kingsbury@winkworth.co.uk](mailto:kingsbury@winkworth.co.uk)

**Winkworth**

for every step...

[winkworth.co.uk](http://winkworth.co.uk)

Winkworth wishes to inform prospective buyers and tenants that these particulars are a guide and act as information only. All our details are given in good faith and believed to be correct at the time of printing but they don't form part of an offer or contract. No Winkworth employee has authority to make or give any representation or warranty in relation to this property. All fixtures and fittings, whether fitted or not are deemed removable by the vendor unless stated otherwise and room sizes are measured between internal wall surfaces, including furnishings.