



EVELYN HOUSE, GREATOREX STREET, LONDON, E1
£400,000 LEASEHOLD

FANTASTIC TWO DOUBLE BEDROOM FIRST-FLOOR APARTMENT WITH WONDERFUL COMMUNAL GARDENS

Shoreditch | 020 7749 7650 | shoreditch@winkworth.co.uk

Winkworth



DESCRIPTION:

Set on the first floor of this purpose-built well-kept block is a spacious two double bedroom apartment with large reception room/diner, ideally located just off Brick Lane. The property comprises entrance hall, storage cupboard, master bedroom with plentiful storage space, second double bedroom with fitted storage, family bathroom, semi open-plan kitchen. The property benefits from secure fob entry system, featured wooden flooring throughout and a beautiful/peaceful communal garden.

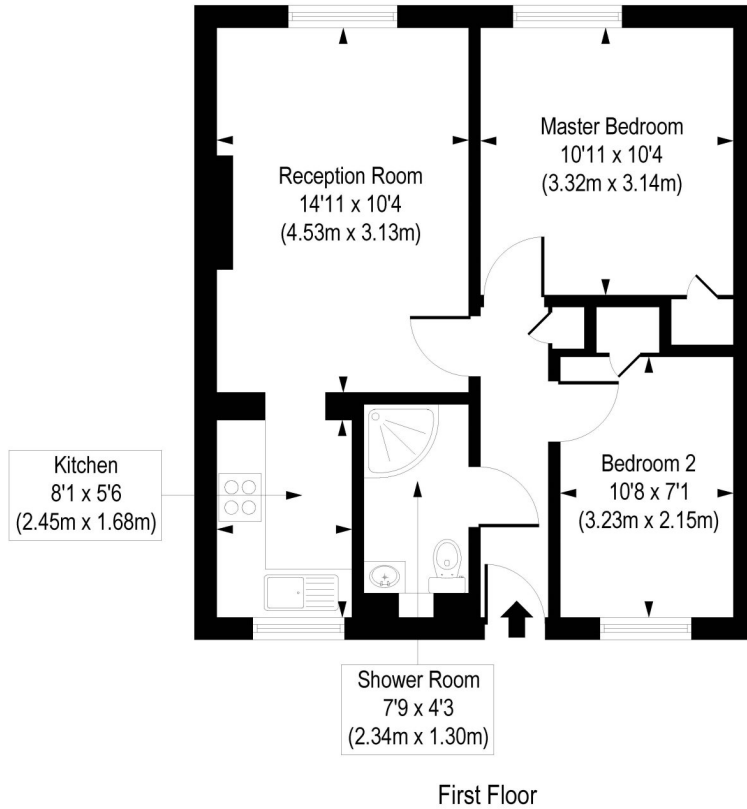
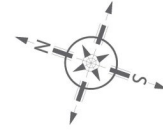
Evelyn House is ideally located for easy living, being so close to the City and the Royal London Hospital, and also a short distance to Aldgate East & Aldgate underground stations, as well as Whitechapel station (Crossrail). Liverpool Street Station is also within close proximity, and you also have a vast array of boutique shops, art galleries, pop ups, cafes, bars and restaurants with Brick Lane and Spitalfields on your doorstep.

Winkworth



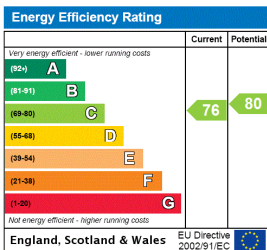
Winkworth

Evelyn House, Greatorex St, E1
 Approx. Gross Internal Floor Area 506 sq. ft / 46.99 sq. m



COMPLIANT WITH RICS CODE OF MEASURING PRACTICE. Floorplan is for illustrative purposes only and is not to scale. Every attempt has been made to ensure the accuracy of the floorplan shown, however all measurements, fixtures, fittings and data shown are an approximate interpretation for illustrative purposes only. Liability for errors, omissions or mis-statement through negligence or otherwise is hereby excluded.

This floorplan is for illustration purposes only and is not to scale. The position and size of doors, windows, appliances and other features are approximate.



Shoreditch | 020 7749 7650 | shoreditch@winkworth.co.uk



winkworth.co.uk

See things differently

Winkworth wishes to inform prospective buyers and tenants that these particulars are a guide and act as information only. All our details are given in good faith and believed to be correct at the time of printing but they don't form part of an offer or contract. No Winkworth employee has authority to make or give any representation or warranty in relation to this property. All fixtures and fittings, whether fitted or not are deemed removable by the vendor unless stated otherwise and room sizes are measured between internal wall surfaces, including furnishings.