



ELSTREE HILL NORTH, BOREHAMWOOD, HERTFORDSHIRE, WD6
£650,000 FREEHOLD

AN EXTENDED THREE BEDROOM, TWO BATHROOM END OF TERRACE CHARTER HOUSE.

Borehamwood | 020 8953 8899 | borehamwood@winkworth.co.uk



DESCRIPTION:

Overlooking greenbelt to both the front and rear is this Victorian three bedroom end of terrace cottage.

Having been subject to a two storey rear extension in 2014 and extensive refurbishment throughout the property offers circa 1300 square feet of family accommodation whilst still retaining its character and many original features.

Located within Elstree Village the property is close to places of worship and within easy access of many "Good" and "Outstanding" Ofsted rated schools as well as several highly regarded independent schools.

AT A GLANCE

- Three Double Bedrooms
- Two Bathrooms
- Two Receptions
- 1295 Square Feet
- Elstree Village
- Secluded Rear Garden Backing Greenbelt





Winkworth



Winkworth



Winkworth

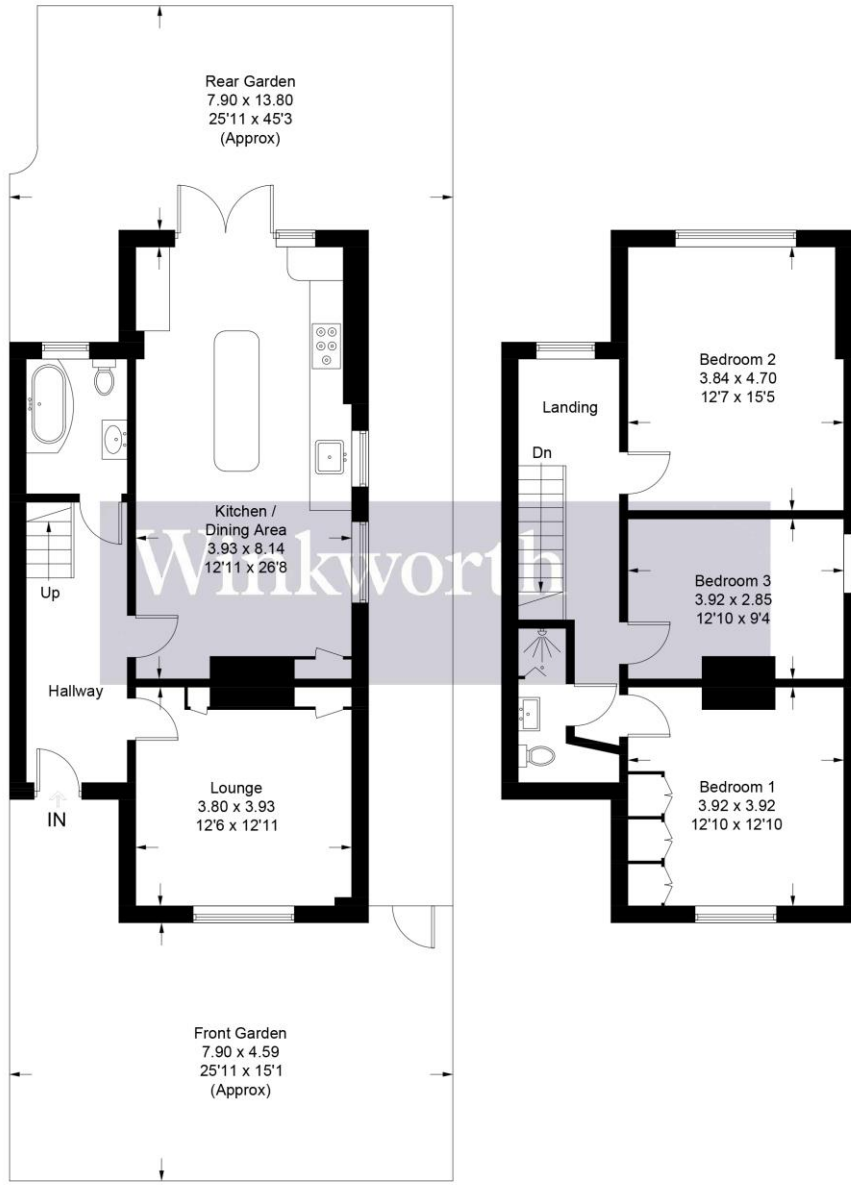


Winkworth



Winkworth

Approximate Gross Internal Area = 120.3 sq m / 1295 sq ft



Ground Floor

First Floor

Illustration for identification purposes only, measurements are approximate, not to scale. Winkworth © 2023 (ID951842)

This floorplan is for illustration purposes only and is not to scale. The position and size of doors, windows, appliances and other features are approximate.

