

## Sinclair Road, Brook Green, W14

£950 per week (£4,117 pcm)

An absolutely stunning three bedroom maisonette with balcony. Unfurnished. Available immediately.


3 Bedrooms | Reception Room | Kitchen | En Suite Bathroom | Shower Room | Balcony | 1647 Sq Ft / 153 Sq M | Deposit - 5 weeks' rent - £4,750 based on asking price of £950 per week | Unfurnished | Council Tax Band E | EPC Rating Band D | London Borough of Hammersmith & Fulham



## DESCRIPTION

Immaculately presented throughout, this beautiful apartment comprises entrance hall, shower room, two double bedrooms, master bedroom with ensuite bathroom, kitchen, reception room and balcony with stunning views across West London. Sinclair Road is ideal for the numerous amenities of Brook Green, including some superb pubs and restaurants. The closest Underground stations are Hammersmith and Shepherds Bush, where London Overground services are also on offer.



Energy Efficiency Rating		Current	Potential
Very energy efficient - lower running costs			
(92+)	<b>A</b>		
(81-91)	<b>B</b>		
(69-80)	<b>C</b>	<b>74</b>	<b>81</b>
(55-68)	<b>D</b>		
(39-54)	<b>E</b>		
(21-38)	<b>F</b>		
(1-20)	<b>G</b>		
Not energy efficient - higher running costs			
<b>England, Scotland &amp; Wales</b>		EU Directive 2002/91/EC	

## TENANTS GUIDE

### HOLDING DEPOSIT RECEIPT:

To secure a property we take one weeks rent as a holding deposit, this must be paid in cleared funds i.e.: bank transfer or debit card. Once the landlord has confirmed the acceptance of your offer, we proceed in taking references. Should the landlord not accept or later withdraw from the offer, the holding deposit will be returned in full. Subject to terms & conditions of the holding deposit, where the tenant decide not to move into the property for whatever reason, the holding deposit is forfeited.

### REFERENCES:

Prospective tenants are required to provide three references; bank, employment and previous/existing landlord. Where a prospective tenant is self-employed or a company owner more detailed references will be required. Where a guarantor is accepted, they should be a UK resident and a property owner, and will be required to provide proof of income and bank reference. Blinc will perform the credit check for both tenant(s) and guarantor(s).

### DEPOSIT:

A five week security deposit is standard for our office (six weeks if the rent is over £50,000 per annum). In most cases Winkworth will be the Deposit Holder, subject to the terms and conditions of the 'Tenancy Deposit Scheme'. Feel free to ask for confirmation of whom Deposit Holder will be.

### INVENTORY:

An inventory lists the contents and condition of the property. Where a professional inventory is carried out the landlord pays for the check-in and also pays for the check-out. In other circumstances the landlord may provide their own inventory.

### TOTAL COST OF MOVING IN:

You will be required to pay one calendar months' rent in advance and the security deposit.

The holding deposit already paid will be deducted from the total amount due, which must be paid on or before the commencement date of the agreement. This will be paid by bank\* transfer directly into our account.

\* Some transfers can take up to three working days to leave your account and to clear in ours. Funds must be cleared in our account before we can allow the tenant to move in.

### EPC - ENERGY PERFORMANCE CERTIFICATE

Agents are required to give tenants a copy of the full EPC report prior to your move in date, which will be done at the time the holding deposit is paid and on the day of your move in.

### UTILITY COMPANIES:

Although we write to all utility companies, informing them when the tenants are moving into the property, it is the responsibility of the tenants to ensure that they are registered with all utility companies, as you will be asked at the end of the tenancy to provide copies of your final utility bills addressed to the tenant for the property.

### TELEVISION & TELEPHONE:

Tenants are responsible for their television licence, whether the landlord provides a television or not. Tenants are also responsible for transferring the telephone landline into their names.

### INSURANCE:

The landlord has his/her own property and contents insured this does not include any of the tenant's belongings. It is tenants responsible to insure their own belongings.

### PETS:

Pets are not permitted under the terms of the tenancy agreement. Should the tenant wish to have a pet(s) in the property they should negotiate this prior to paying the holding deposit. If consent is given this should be confirmed in writing and also included in the tenancy agreement.

### PARKING/CAR OWNERS:

Some properties and developments are part of the Local Authorities 'Low Car Housing Scheme' and as such there is no parking in the development or on the property nor any right to apply to the local authority for a parking permit (except those with disabilities who are blue badge holders). If this issue is important to you, we advise seek confirmation from the Local Authority or a member of our staff that any property of interest is not within such a scheme.

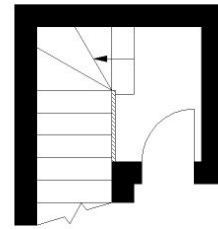
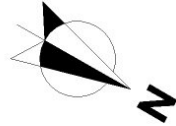
### COUNCIL TAX:

Each domestic dwelling has been allocated to one of eight bands, A to H, according to its open market capital value at 1<sup>st</sup> April 1991. The range of values for each band is detailed below. Further information is available on the London Borough of Hammersmith & Fulham website [www.lbhf.gov.uk](http://www.lbhf.gov.uk)

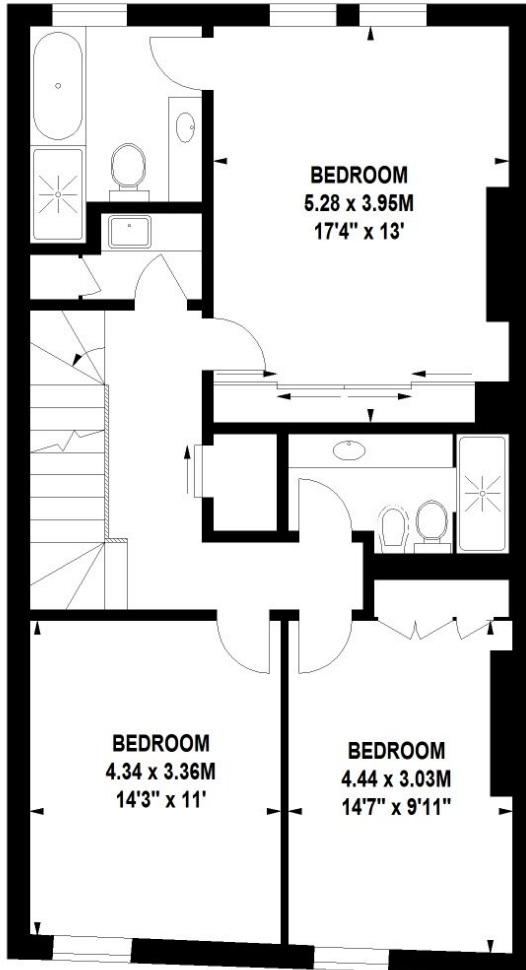
Band	A	B	C	D	E	F	G	H
2024/2025	£924.51	£1,078.59	£1,232.68	£1,386.77	£1,694.94	£2,003.10	£2,311.28	£2,773.54

# Sinclair Road, W14

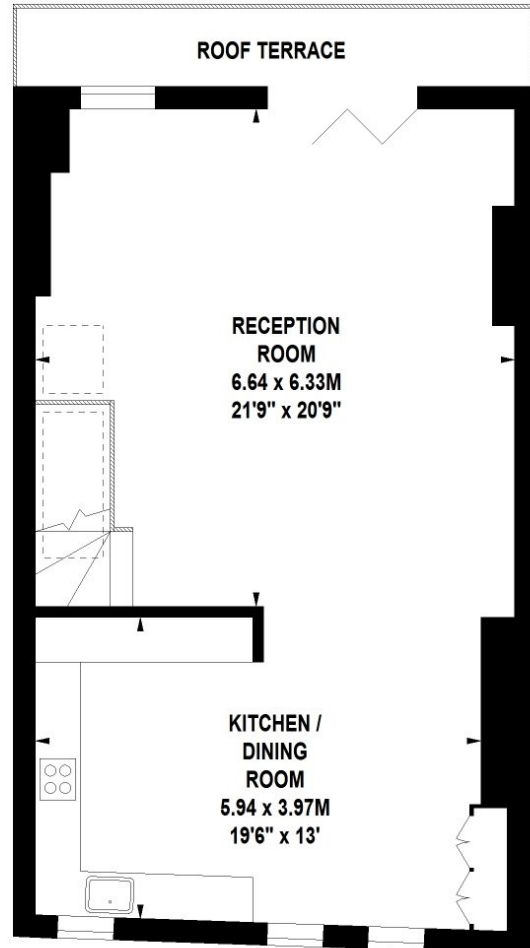
Approximate Gross Internal Area 153 sq.m / 1647 sq. ft



**First Floor**



**Second Floor**



**Third Floor**

Floor Plan produced for WINKWORTH by Mays Floorplans © . Tel 020 3397 4594  
Illustration for identification purposes only, not to scale  
All measurements are maximum, and include wardrobes and window bays where applicable

The displayed square footage is taken from the floor plans with measurements created using the Royal Institute of Chartered Surveyors' Code of Practice for Measuring. These measurements are approximate and included for illustrative purposes only. Winkworth does not make any representation as to the accuracy of these measurements and you should seek to verify them for yourself. Winkworth accept no liability for any loss you may suffer if you rely on these measurements.

Hammersmith | 0207 371 4466 | hammersmith@winkworth.co.uk

**Winkworth**

for every step...

Under the Property Misdescriptions Act 1991, these Particulars are a guide and act as information only. All details are given in good faith and are believed to be correct at time of printing. Winkworth give no representation as to their accuracy and potential purchasers or tenants must satisfy themselves by inspection or otherwise as to their correctness. No employee of Winkworth has authority to make or give any representation or warranty in relation to this property.