



ST JAMES WHARF, READING, BERKSHIRE, RG1 3JJ
£1,595 PER MONTH FURNISHED

EXECUTIVE TWO BEDROOM THIRD FLOOR APARTMENT LOCATED IN THE HEART OF READING TOWN CENTRE

Reading | 0118 4022 300 | reading@winkworth.co.uk

Winkworth

for every step...

winkworth.co.uk



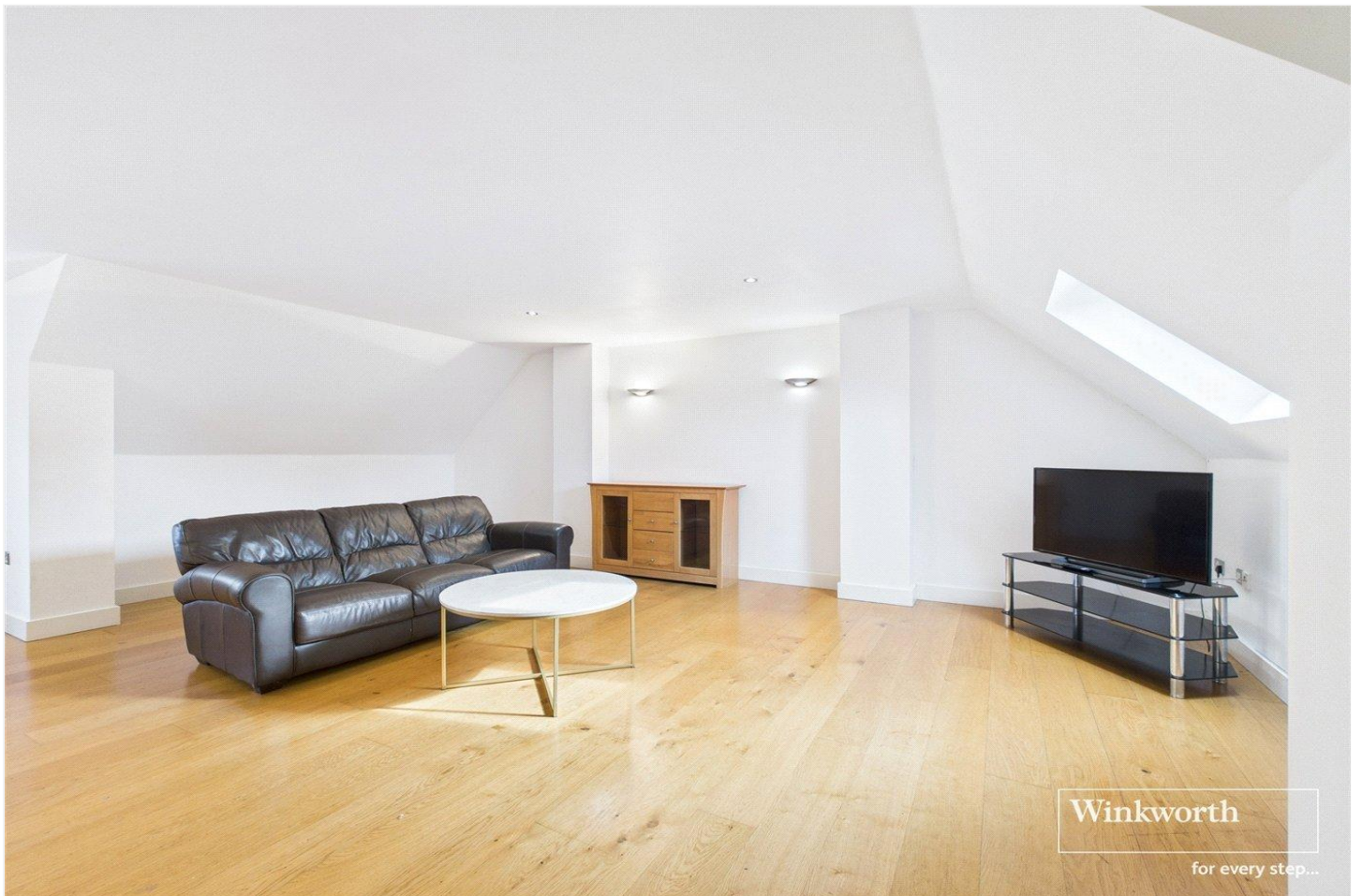
DESCRIPTION:

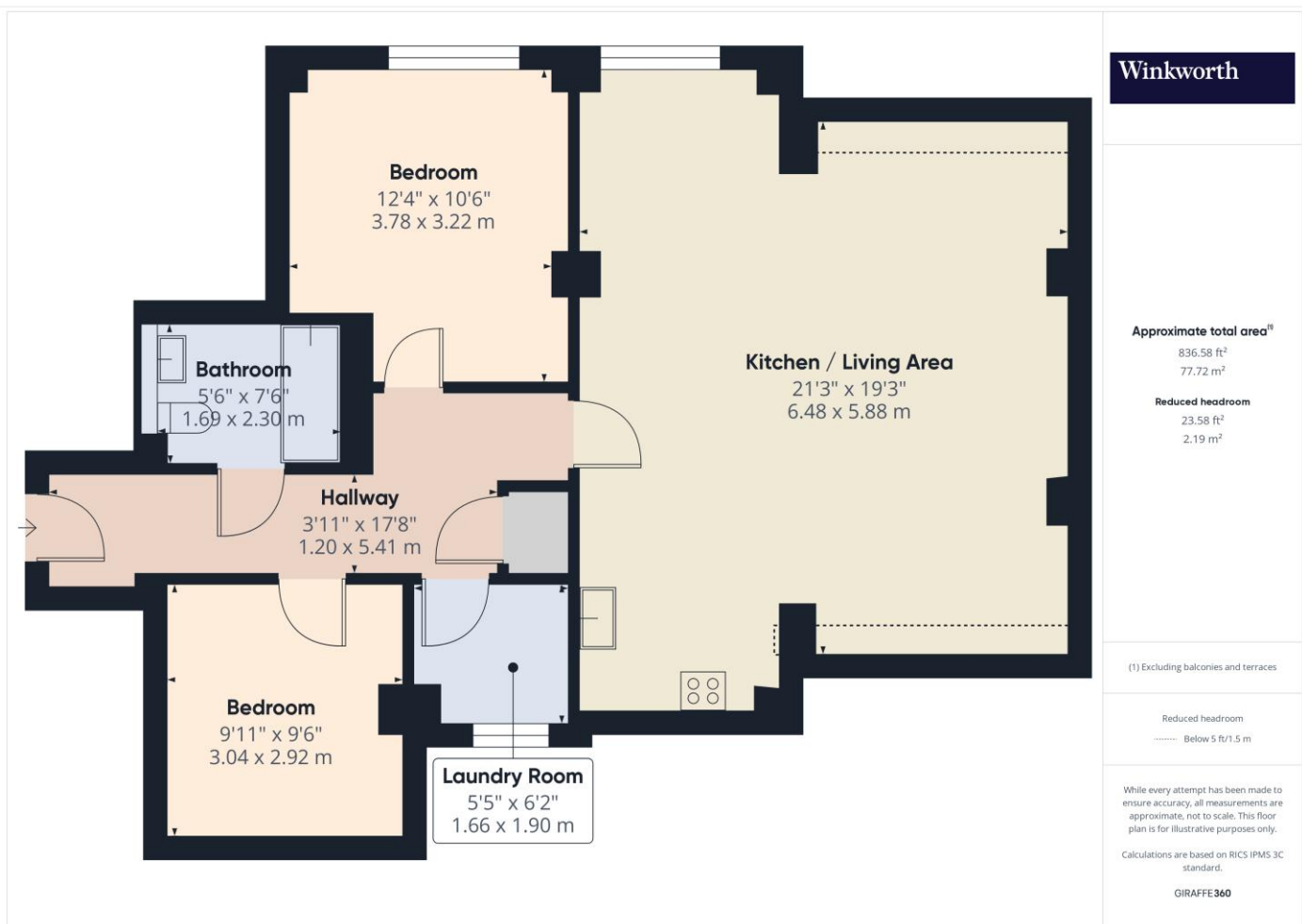
Executive two bedroom third floor apartment located in the heart of Reading town centre next to the Kennet & Avon canal. The property comprises two double bedrooms, a large open plan living area, kitchen with integrated appliances, utility room and a modern bathroom. (No parking) Available now. Furnished.

AT A GLANCE

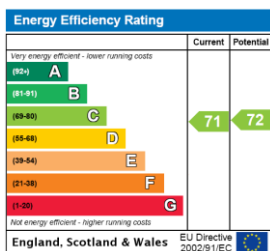
- Located in Reading town centre
- Third floor with lift access
- Two double bedrooms
- Large open plan living area
- Council tax band D
- No parking
- Available now
- Furnished







This floorplan is for illustration purposes only and is not to scale. The position and size of doors, windows, appliances and other features are approximate.



Deposit: £1,840.38

Holding Deposit: £368.07

Council Tax Band: D

Where no figures are shown, we have been unable to ascertain the information. All figures that are shown were correct at the time of printing.



for every step...

Reading | 0118 4022 300 | reading@winkworth.co.uk

winkworth.co.uk

Winkworth wishes to inform prospective buyers and tenants that these particulars are a guide and act as information only. All our details are given in good faith and believed to be correct at the time of printing but they don't form part of an offer or contract. No Winkworth employee has authority to make or give any representation or warranty in relation to this property. All fixtures and fittings, whether fitted or not are deemed removable by the vendor unless stated otherwise and room sizes are measured between internal wall surfaces, including furnishings.