



NIGHTINGALE WAY, BERKSHIRE, RG30 1EX
£1,300 PER MONTH FURNISHED

MODERN ONE BEDROOM APARTMENT
LOCATED CLOSE TO READING TOWN CENTRE.
AVAILABLE 8TH OCTOBER.

Reading | 0118 4022 300 | reading@winkworth.co.uk

Winkworth

for every step...

winkworth.co.uk

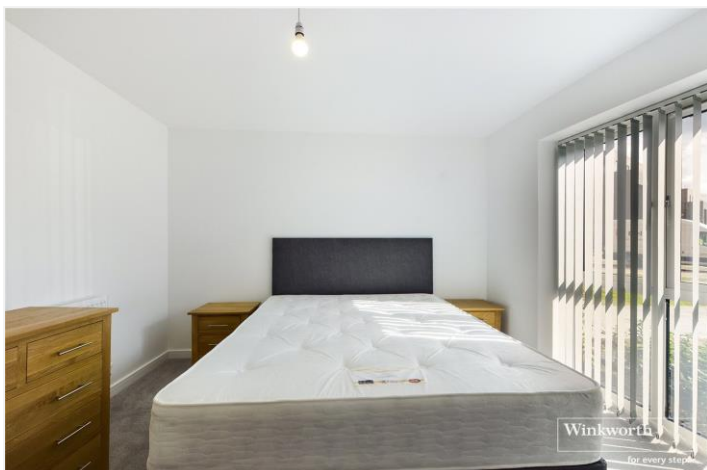


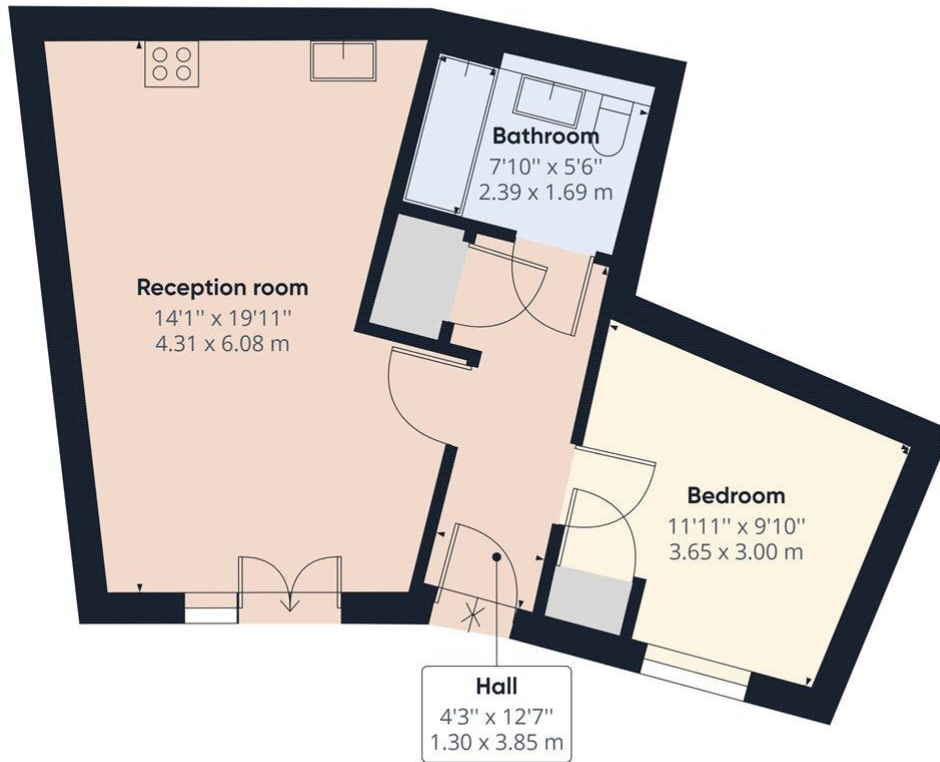
DESCRIPTION:

Modern ground floor one bedroom apartment located within the Renaissance development just off of Portman Road and within easy reach of Reading town centre. The property comprises open plan living room/kitchen with integrated appliances, one double bedroom and a modern three piece bathroom. Further benefits private entrance, allocated off road parking space and use of the communal podium located on the first floor. Available 8th October 2024. Furnished.

AT A GLANCE

- Modern one bedroom apartment
- Ground floor
- Private entrance
- Off road allocated parking space
- Council tax band B
- Available 8th October
- Furnished





Approximate total area⁽¹⁾
 499.67 ft²
 46.42 m²

(1) Excluding balconies and terraces

While every attempt has been made to ensure accuracy, all measurements are approximate, not to scale. This floor plan is for illustrative purposes only.

GIRAFFE360

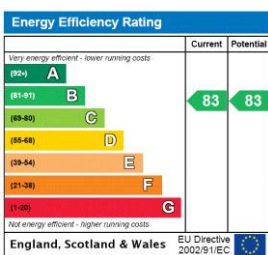
This floorplan is for illustration purposes only and is not to scale. The position and size of doors, windows, appliances and other features are approximate.

Deposit: £1,500.00

Holding Deposit: £300.00

Council Tax Band: B

Where no figures are shown, we have been unable to ascertain the information. All figures that are shown were correct at the time of printing.



Reading | 0118 4022 300 | reading@winkworth.co.uk



for every step...

winkworth.co.uk

Winkworth wishes to inform prospective buyers and tenants that these particulars are a guide and act as information only. All our details are given in good faith and believed to be correct at the time of printing but they don't form part of an offer or contract. No Winkworth employee has authority to make or give any representation or warranty in relation to this property. All fixtures and fittings, whether fitted or not are deemed removable by the vendor unless stated otherwise and room sizes are measured between internal wall surfaces, including furnishings.