



FAIRFIELD AVENUE, EDGWARE, MIDDLESEX, HA8
£865,000 FREEHOLD

LUXURIOUS THREE BEDROOM SEMI DETACHED MODERN HOME

Kingsbury | 020 8204 0000 | kingsbury@winkworth.co.uk

Winkworth

winkworth.co.uk

See things differently

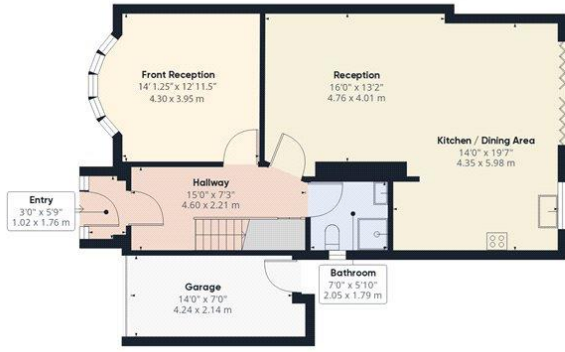


DESCRIPTION:

Discover this beautifully decorated, modern semi-detached house, offering a perfect blend of comfort, style, and convenience. Situated in the desirable area of Edgware, this home is perfect for families seeking a spacious living environment. This stunning property boasts three well-proportioned bedrooms, each with ample natural light. The property features an open-plan living room that creates a spacious and inviting atmosphere, perfect for modern family life. The fabulous kitchen area is fully fitted with top-of-the-line appliances and includes a stylish breakfast bar making it a dream for both cooking enthusiasts and casual



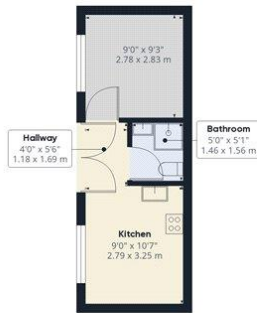




Ground Floor Building 1



Floor 1 Building 1



Ground Floor Building 2

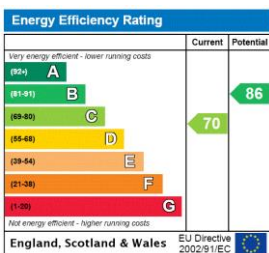
Approximate total area⁽¹⁾
1645.59 ft²
152.88 m²

(1) Excluding balconies and terraces

While every attempt has been made to ensure accuracy, all measurements are approximate, not to scale. This floor plan is for illustrative purposes only.

GIRAFFE360

This floorplan is for illustration purposes only and is not to scale. The position and size of doors, windows, appliances and other features are approximate.



Kingsbury | 020 8204 0000 | kingsbury@winkworth.co.uk