

**FAIRFIELD AVENUE, EDGWARE, MIDDLESEX, HA8
OFFERS IN THE REGION OF £850,000 FREEHOLD**

LUXURIOUS THREE BEDROOM SEMI DETACHED MODERN HOME

Kingsbury | 020 8204 0000 | kingsbury@winkworth.co.uk



winkworth.co.uk

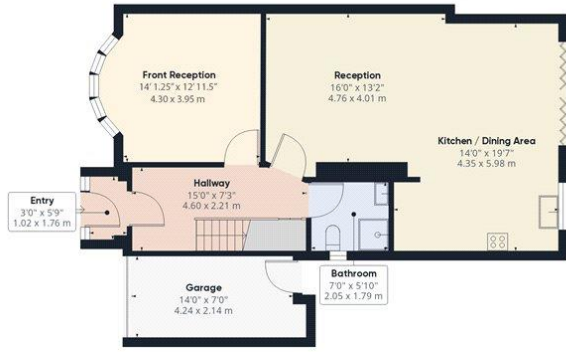
See things differently



Discover this beautifully decorated, modern semi-detached house, offering a perfect blend of comfort, style, and convenience. Situated in the desirable area of Edgware, this home is perfect for families seeking a spacious living environment. This stunning property boasts three well-proportioned bedrooms, each with ample natural light. The property features an open-plan living room that creates a spacious and inviting atmosphere, perfect for modern family life. The fabulous kitchen area is fully fitted with top-of-the-line appliances and includes a stylish breakfast bar, making it a dream for both cooking enthusiasts and casual dining. With three modern bathrooms, designed with high-quality fixtures and fittings, get ready to relax in luxury. Enjoy your own off-street parking suitable for a minimum of two cars, with a gated driveway, ensuring secure and hassle-free parking for you and your guests. The well-maintained garden is perfect for outdoor activities, gardening, or simply relaxing in your private oasis. Additionally, the property includes a practical outhouse, offering extra storage or the potential for a home office. As a freehold property, it offers complete ownership and control, giving you peace of mind and long-term security. Located in Edgware, the property is conveniently close to local amenities, schools, parks, and public transport links. Don't miss the opportunity to own this stunning semi-detached home. Schedule a viewing today and make this dream property your new home!







Ground Floor Building 1



Floor 1 Building 1



Ground Floor Building 2

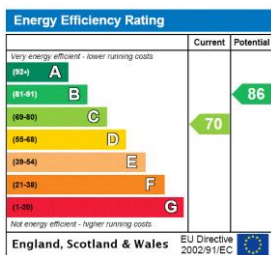
Approximate total area⁽¹⁾
1645.59 ft²
152.88 m²

(1) Excluding balconies and terraces

While every attempt has been made to ensure accuracy, all measurements are approximate, not to scale. This floor plan is for illustrative purposes only.

GIRAFFE360

This floorplan is for illustration purposes only and is not to scale. The position and size of doors, windows, appliances and other features are approximate.



Kingsbury | 020 8204 0000 | kingsbury@winkworth.co.uk