

SOUTH LODGE, ST JOHN'S WOOD, LONDON, NW8 £2,500,000 SHARE OF FREEHOLD

Situated in this prestigious portered block is this first-floor apartment, offering generous living accommodation c1900 sq ft which comprises of four bedrooms, two bathrooms, a 25ft reception room, a kitchen and a dining room. The property further benefits from traditional Georgian sash windows, tall ceiling heights throughout, a guest WC, parking on a first-come first-served basis, 24-hour uniformed portage, communal heating and hot water and numerous passenger lifts. St John's Wood Underground Station (Jubilee line) and the newly landscaped high street are approximately 0.3 miles from the development, with both Lord's Cricket Ground and Regent's Park also less than half a mile away.

Images have been virtually staged using CGI and are for illustrative purposes only. They are intended to convey the concept and vision for the property. They are for guidance only, and may alter and do not necessarily represent a true and accurate depiction of the finished property.

Four Bedrooms | Family Bathroom | Shower Room | Guest WC | Reception Room | Dining Room | Kitchen | 24-Hour Portage | First Come First Served Parking | Communal Heating & Hot Water | Share of Freehold

Winkworth

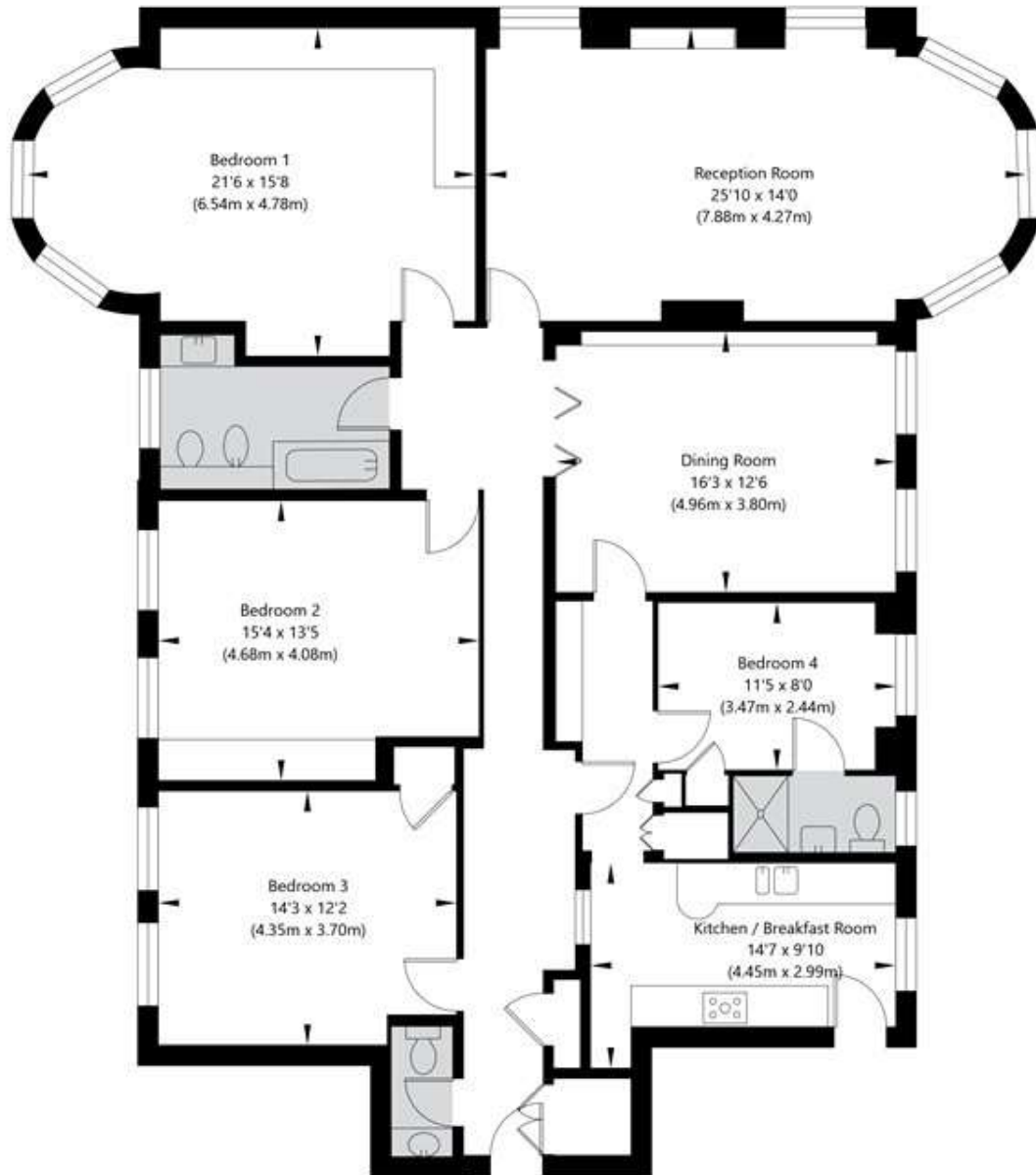
for every step...

winkworth.co.uk/st-johns-wood



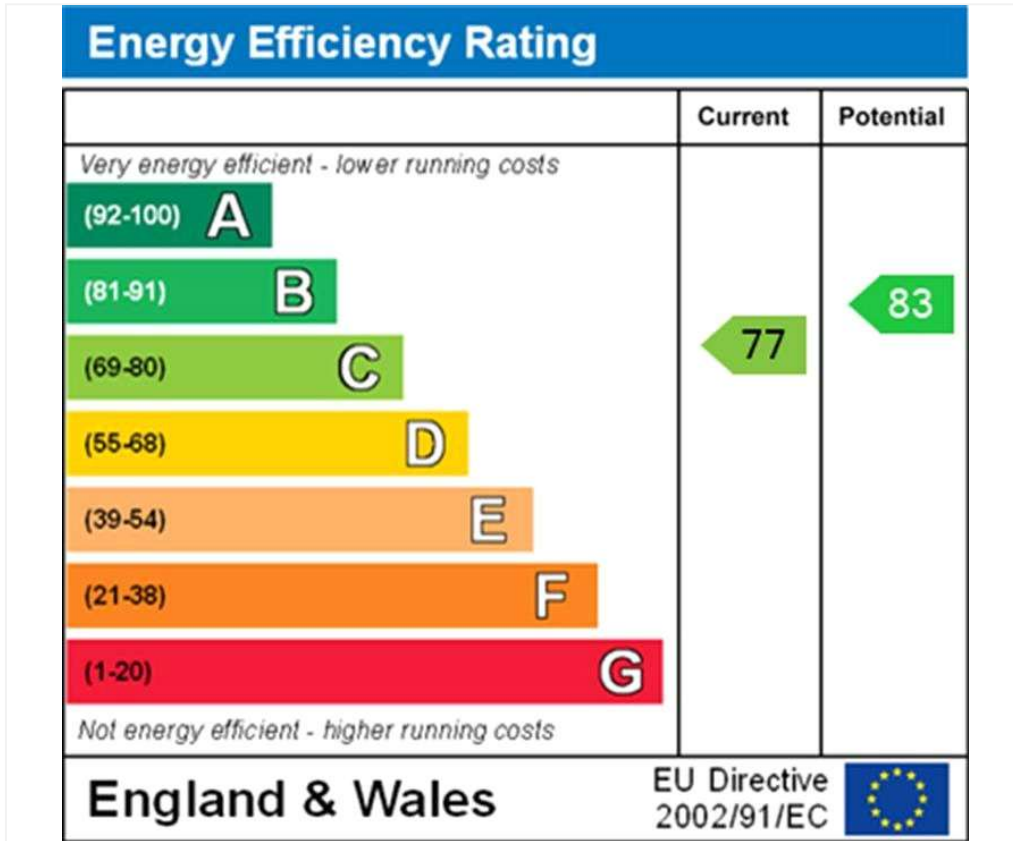
South Lodge, Circus Road, NW8 9EU

First Floor
GROSS INTERNAL FLOOR AREA
APPROX. 174.42 SQ M / 1877 SQ FT



APPROXIMATE GROSS INTERNAL FLOOR AREA 174.42 SQ M / 1877 SQ FT
THIS FLOOR PLAN IS FOR ILLUSTRATIVE PURPOSES ONLY AND
SHOULD BE USED FOR THIS PURPOSE BY PROSPECTIVE APPLICANTS AS ITS NOT TO SCALE.

(c) AMBERSHORE PIX LIMITED / PHOTO - VIDEO - FLOOR PLANS / 0800 999 1577 / WWW.AMERSHOREPIX.CO.UK



Tenure: Share of Freehold

Term: Expires - 18/07/3015

Service Charge: £17,423.32 per annum

Ground Rent: £0

Council Tax Band: G

Where no figures are shown, we have been unable to ascertain the information. All figures that are shown were correct at the time of printing.

Where no figures are shown, we have been unable to ascertain the information. All figures that are shown were correct at the time of printing. These particulars are not an offer or contract, nor part of one. You should not rely on statements by Winkworth in the particulars or by word of mouth or in writing "information" as being factually accurate about the property, its condition or its value. Winkworth does not have any authority to make any representations about the property, and accordingly any information given is entirely without responsibility on the part of the agents, seller(s) or lessor(s). These particulars are prepared on the basis of the information supplied by our client and are a rough guide for information only. The photographs show only certain parts of the property. We are not able to check all of the information and therefore are unable to guarantee accuracy. All interested parties are therefore advised to undertake all necessary inspections and checks that they deem appropriate. Where displayed, the square footage is taken from the floor plans, which are created by an independent supplier. These measurements are approximate and included for illustrative purposes only. The measurements may vary. Winkworth does not make any representation as to the accuracy of these measurements and you should seek to verify them for yourself. Winkworth accept no liability for any loss you may suffer if you rely on these measurements. All fixtures and fittings, whether fitted or not are deemed removable by the vendor unless stated. Any reference to alterations to, or use of, any part of the property does not mean that any necessary planning, building regulations or other consent has been obtained. Amenities and appliances have not been tested



St John's Wood | 103-104 St. Johns Wood Terrace, London, NW8 6PL | 020 7586 7001 | stjohnswood@winkworth.co.uk

for every step...

winkworth.co.uk/st-johns-wood

Winkworth wishes to inform prospective buyers and tenants that these particulars are a guide and act as information only. All our details are given in good faith and believed to be correct at the time of printing but they don't form part of an offer or contract. No Winkworth employee has authority to make or give any representation or warranty in relation to this property. All fixtures and fittings, whether fitted or not are deemed removable by the vendor unless stated otherwise and room sizes are measured between internal wall surfaces, including furnishings.