



BLURTON ROAD, LONDON, E5
£750,000 SHARE OF FREEHOLD

CHARMING SPLIT-LEVEL THREE-BEDROOM GARDEN FLAT ON BLURTON ROAD,

Hackney | 020 8986 4216 | hackney@winkworth.co.uk

Winkworth

winkworth.co.uk

See things differently



DESCRIPTION:

This split-level three-bedroom flat, located on Blurton Road, E5, offers an exceptional living space, blending comfort and style in a highly sought-after area. Set within a period conversion, this property retains its original character while providing all the modern amenities for convenient city living.

The flat boasts a spacious and airy layout, with a large living room perfect for both relaxation and entertaining. The well-proportioned bedrooms offer plenty of space and are ideal for families, sharers, or those in need of extra room for a home office or guest room. The split-level design adds an extra sense of space and privacy, making it an ideal choice for those looking for a well-balanced living arrangement.

One of the standout features of this property is its massive private garden – a rare find in this area. Offering plenty of outdoor space, it provides the perfect place for alfresco dining, gardening, or simply unwinding in a peaceful, private setting.

Situated just a short walk from the vibrant Chatsworth Road, this flat enjoys excellent access to an array of local amenities. Chatsworth Road is known for its trendy atmosphere, with a diverse mix of independent shops, cafés, restaurants, and pubs. Whether you're enjoying a coffee at one of the local cafés, browsing fresh produce at the market, or dining out, this lively street has something for everyone.

The property is also ideally located for outdoor enthusiasts, with the nearby Hackney Marshes offering expansive green spaces perfect for walking, jogging, or cycling.

With excellent transport links, the flat is within walking distance of Hackney Central Station, providing direct and quick connections to the city. Local bus routes also make commuting to other parts of London convenient and hassle-free.

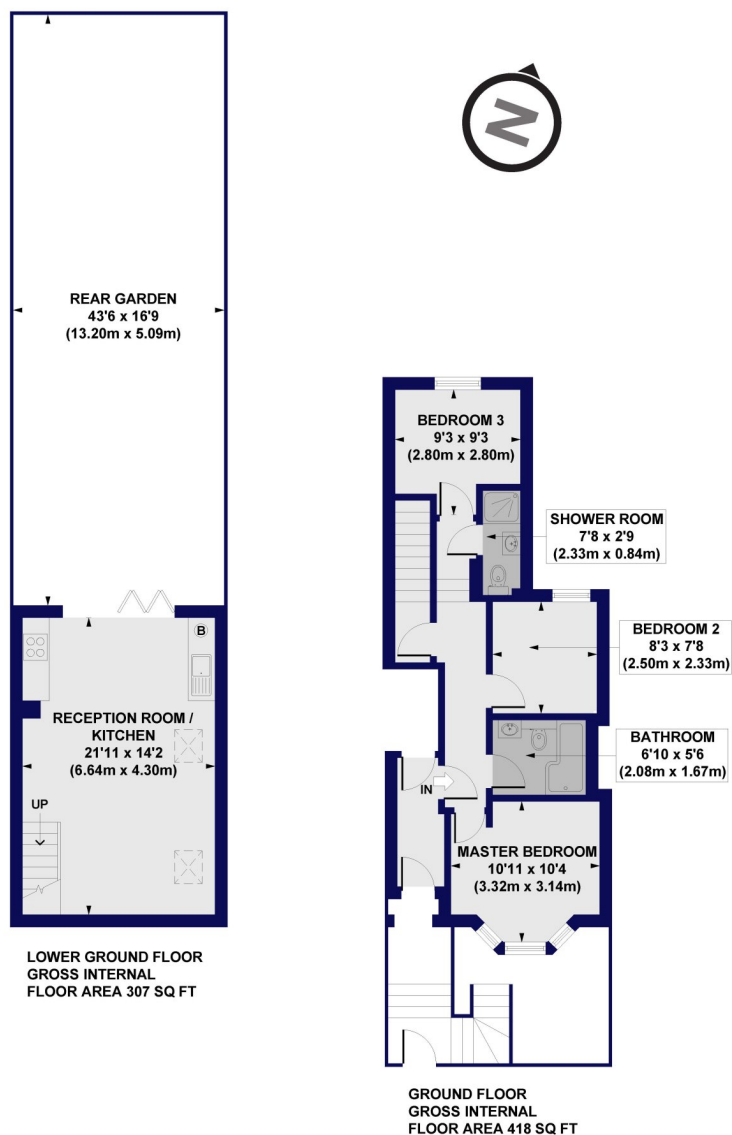
In summary, this spacious split-level three-bedroom flat on Blurton Road offers a perfect combination of comfortable living, fantastic local amenities, and a massive private garden – ideal for those seeking a blend of urban convenience and outdoor space. Perfect for families, sharers, or anyone looking for a bright and versatile home in one of East London's most desirable locations.

Winkworth



Winkworth

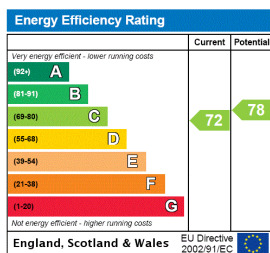
Blurton road, E5
Approx. Gross Internal Floor Area 726 sq. ft / 67.41 sq. m



All measurements of walls, doors, windows, fittings and appliances, including their size and location, are shown as standard sizes and do not constitute any warranty or representation by the seller, their agent or CP Creative. Any intending purchaser must satisfy himself by inspection or otherwise as to the correctness of the information contained in these plans. This plan is for illustrative purposes only and should be used as such by any prospective purchasers.

Winkworth

This floorplan is for illustration purposes only and is not to scale. The position and size of doors, windows, appliances and other features are approximate.



Hackney | 020 8986 4216 | hackney@winkworth.co.uk



winkworth.co.uk

See things differently

Winkworth wishes to inform prospective buyers and tenants that these particulars are a guide and act as information only. All our details are given in good faith and believed to be correct at the time of printing but they don't form part of an offer or contract. No Winkworth employee has authority to make or give any representation or warranty in relation to this property. All fixtures and fittings, whether fitted or not are deemed removable by the vendor unless stated otherwise and room sizes are measured between internal wall surfaces, including furnishings.