



WATLING COURT, ELSTREE, BOREHAMWOOD, WD6

**£325,000 LEASEHOLD**

**TWO DOUBLE BEDROOM DUPLEX MAISONETTE  
WITH SECURE PARKING IN THE HEART OF  
ELSTREE.**

**Borehamwood | 020 8953 8899 | borehamwood@winkworth.co.uk**



Winkworth

**DESCRIPTION:**

Positioned on the first and second floor of this popular block in the heart of Elstree and sold chain free with the benefit of ample and secure parking is this spacious and well presented two double bedroom duplex maisonette measuring circa 800 square feet.

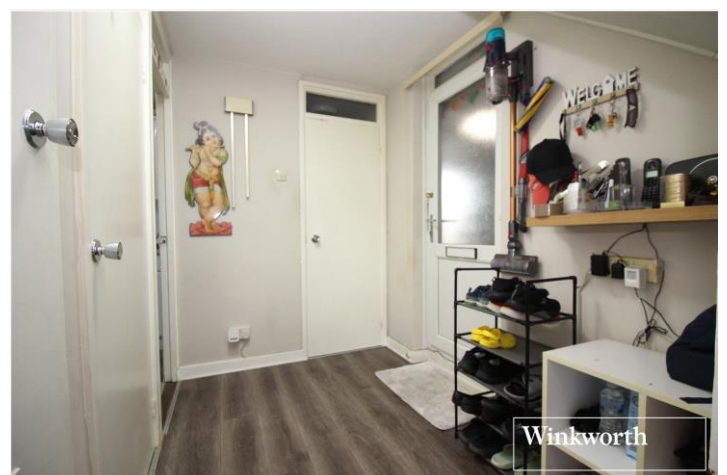
Located on both the 107 and 306 bus routes the flat is within easy access of Elstree and Borehamwood Thameslink, Edgware Northern Line and Bushey National Rail stations.

**AT A GLANCE**

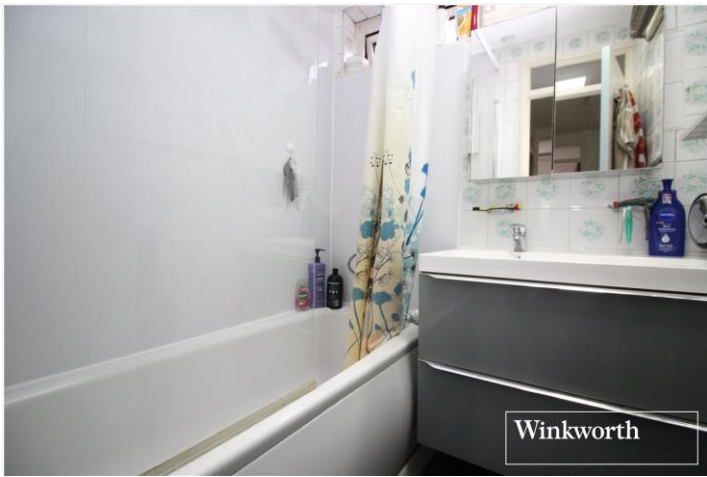
- Two Double Bedrooms
- 156 Year Lease
- 793 Square Feet
- Two Double Bedrooms
- "L" Shaped Reception
- Southerly Facing Balcony
- Secure Gated Parking
- Double Glazed



Winkworth



Winkworth



Approximate Gross Internal Area = 73.7 sq m / 793 sq ft

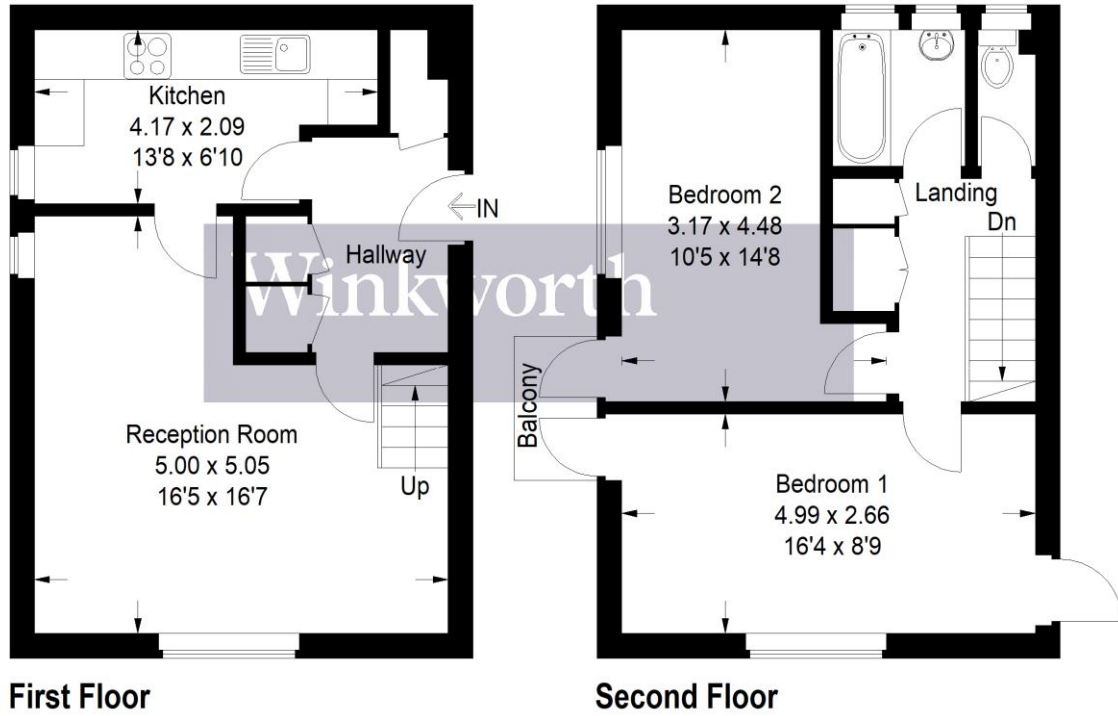
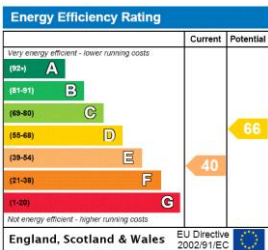


Illustration for identification purposes only, measurements are approximate, not to scale. Winkworth © 2019 (ID 511011)

This floorplan is for illustration purposes only and is not to scale. The position and size of doors, windows, appliances and other features are approximate.



**Tenure:** Leasehold

**Term:** 156 year and 6 months

**Service Charge:** TBA

**Ground Rent:** £ 0 Annually (subject to increase)

**Council Tax Band:** C

Where no figures are shown, we have been unable to ascertain the information. All figures that are shown were correct at the time of printing.