

BERKELEY COURT, BAKER STREET, LONDON, NW1 £1,950,000 LEASEHOLD

We are delighted to offer for sale this stunning four-bedroom apartment, located on the third-floor of this charming art-deco apartment building, with 24hr concierge and a beautiful communal entrance with marble floors and water features. The property has been recently redecorated and benefits from a 34ft reception / dining room, a separate kitchen, two bathrooms and is double-glazed throughout. Not only does this development benefit from an amazing roof terrace, with far-reaching views across London, Regent's Park is only 200 metres away. Access to the building is from Glentworth Street, which is less than 100 metres away from Baker Street Underground Station (Jubilee, Bakerloo, Hammersmith, City & Circle and Metropolitan lines).

Four Bedrooms | Bathroom | Shower Room | Open Plan Reception/ Dining Room | Separate Kitchen | Concierge | Communal Roof Terrace | Passenger Lift | Leasehold

Winkworth

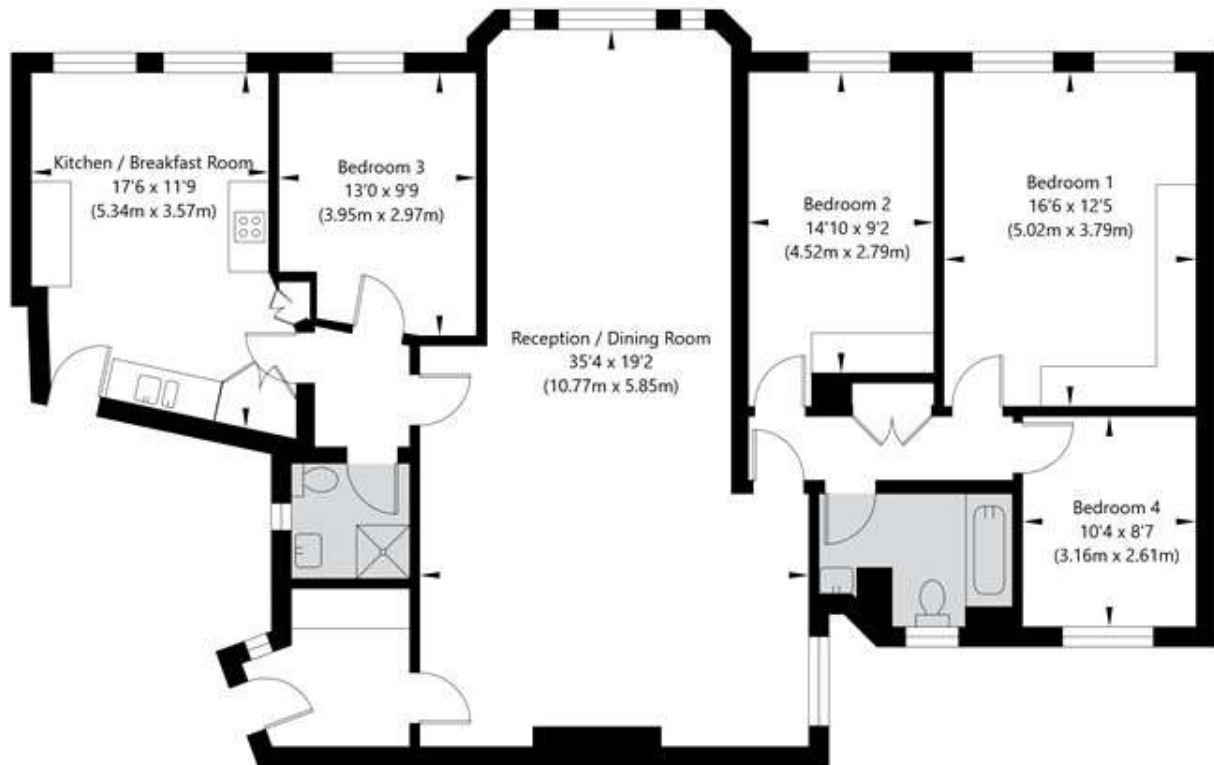
for every step...

winkworth.co.uk/st-johns-wood



Berkeley Court, Marylebone Road, London NW1 5NB

Third Floor
GROSS INTERNAL FLOOR AREA
APPROX. 149.26 SQ M / 1607 SQ FT



APPROXIMATE GROSS INTERNAL FLOOR AREA 149.26 SQ M / 1607 SQ FT
THIS FLOOR PLAN IS FOR ILLUSTRATIVE PURPOSES ONLY AND
SHOULD BE USED FOR THIS PURPOSE BY PROSPECTIVE APPLICANTS AS ITS NOT TO SCALE.

(c) AMBERSHORE PIX LIMITED / PHOTO - VIDEO - FLOOR PLANS / 0800 999 1577 / WWW.AMERSHOREPIX.CO.UK

Score	Energy rating	Current	Potential
92+	A		
81-91	B		82 B
69-80	C	75 C	
55-68	D		
39-54	E		
21-38	F		
1-20	G		

Tenure: Leasehold

Term: Expires - 29/09/2987

Service Charge: £12,400 per annum

Ground Rent: £100 Annually (subject to increase)

Council Tax Band: G

Where no figures are shown, we have been unable to ascertain the information. All figures that are shown were correct at the time of printing.

Where no figures are shown, we have been unable to ascertain the information. All figures that are shown were correct at the time of printing. These particulars are not an offer or contract, nor part of one. You should not rely on statements by Winkworth in the particulars or by word of mouth or in writing "information" as being factually accurate about the property, its condition or its value. Winkworth does not have any authority to make any representations about the property, and accordingly any information given is entirely without responsibility on the part of the agents, seller(s) or lessor(s). These particulars are prepared on the basis of the information supplied by our client and are a rough guide for information only. The photographs show only certain parts of the property. We are not able to check all of the information and therefore are unable to guarantee accuracy. All interested parties are therefore advised to undertake all necessary inspections and checks that they deem appropriate. Where displayed, the square footage is taken from the floor plans, which are created by an independent supplier. These measurements are approximate and included for illustrative purposes only. The measurements may vary. Winkworth does not make any representation as to the accuracy of these measurements and you should seek to verify them for yourself. Winkworth accept no liability for any loss you may suffer if you rely on these measurements. All fixtures and fittings, whether fitted or not are deemed removable by the vendor unless stated. Any reference to alterations to, or use of, any part of the property does not mean that any necessary planning, building regulations or other consent has been obtained. Amenities and appliances have not been tested

Winkworth

St John's Wood | 103-104 St. Johns Wood Terrace, London, NW8 6PL | 020 7586 7001 | stjohnswood@winkworth.co.uk

for every step...

winkworth.co.uk/st-johns-wood

Winkworth wishes to inform prospective buyers and tenants that these particulars are a guide and act as information only. All our details are given in good faith and believed to be correct at the time of printing but they don't form part of an offer or contract. No Winkworth employee has authority to make or give any representation or warranty in relation to this property. All fixtures and fittings, whether fitted or not are deemed removable by the vendor unless stated otherwise and room sizes are measured between internal wall surfaces, including furnishings.