



Winkworth
for every step...



Winkworth
for every step...



Winkworth
for every step...

SUNNY VIEW, LONDON, NW9
OFFERS IN EXCESS OF £750,000 FREEHOLD

CHARMING HOME WITH MODERN LIVING AND EXPANSION POTENTIAL

Hendon | 020 8202 1031 | hendon@winkworth.co.uk

Winkworth

for every step...

winkworth.co.uk

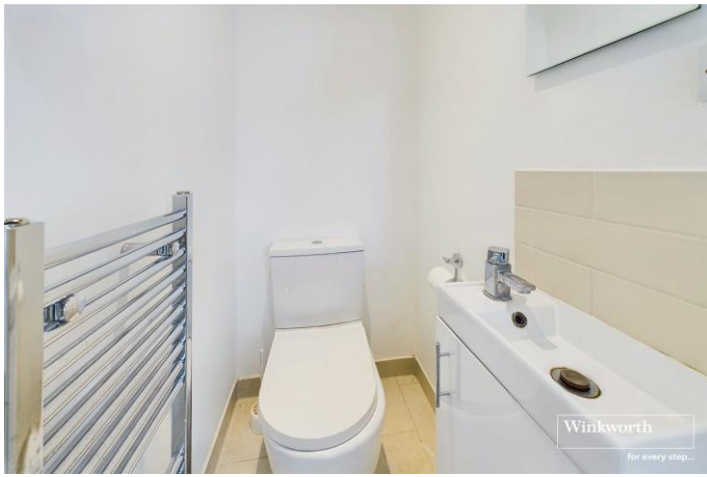


DESCRIPTION: This bright and spacious three-bedroom home, with one room currently used as a study, offers modern living at its best. The open plan living and dining areas are filled with natural light, creating a warm and inviting space. Off-street parking adds convenience, while the large garden provides ample room for outdoor activities and future extension possibilities.

Situated just off the sought-after Wakemans Hill Avenue, this home offers both tranquillity and easy access to local amenities. A perfect blend of comfort, style, and potential awaits you all within a highly desirable neighbourhood. Don't miss out on making this versatile and well-located property your own.



for every step...

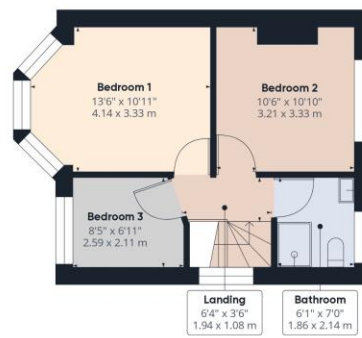


Winkworth

for every step...



Ground Floor Building 1



Floor 1 Building 1



Ground Floor Building 2

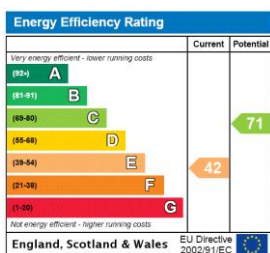
Approximate total area⁽¹⁾
1334.29 ft²
123.96 m²

(1) Excluding balconies and terraces

While every attempt has been made to ensure accuracy, all measurements are approximate, not to scale. This floor plan is for illustrative purposes only.
Calculations are based on RICS IPMS 3C standard.

GIRAFFE360

This floorplan is for illustration purposes only and is not to scale. The position and size of doors, windows, appliances and other features are approximate.



Tenure: Freehold

Council Tax Band:

Where no figures are shown, we have been unable to ascertain the information. All figures that are shown were correct at the time of printing.

Hendon | 020 8202 1031 | hendon@winkworth.co.uk

Winkworth

for every step...

winkworth.co.uk

Winkworth wishes to inform prospective buyers and tenants that these particulars are a guide and act as information only. All our details are given in good faith and believed to be correct at the time of printing but they don't form part of an offer or contract. No Winkworth employee has authority to make or give any representation or warranty in relation to this property. All fixtures and fittings, whether fitted or not are deemed removable by the vendor unless stated otherwise and room sizes are measured between internal wall surfaces, including furnishings.