



FLAT 2, RIVERSDALE ROAD, LONDON, N5
£325,000 LEASEHOLD

A BRIGHT, ONE BEDROOM APARTMENT SET
IN A HANDSOME DOUBLE FRONTED
VICTORIAN HOUSE.

Highbury | 0207 989 7000 | highbury@winkworth.co.uk

Winkworth

winkworth.co.uk

See things differently



DESCRIPTION:

A wonderfully bright, one double bedroom period conversion finished to a high standard in Highbury, N5. Set laterally across the first floor, accommodation comprises of a well-proportioned, open plan living room/kitchen complete with superb ceiling height and enormous, south facing sash windows. The double bedroom benefits from built in wardrobes and has views across peaceful neighbouring gardens. The property is completed with a modern bathroom and is offered to the market with a long lease.

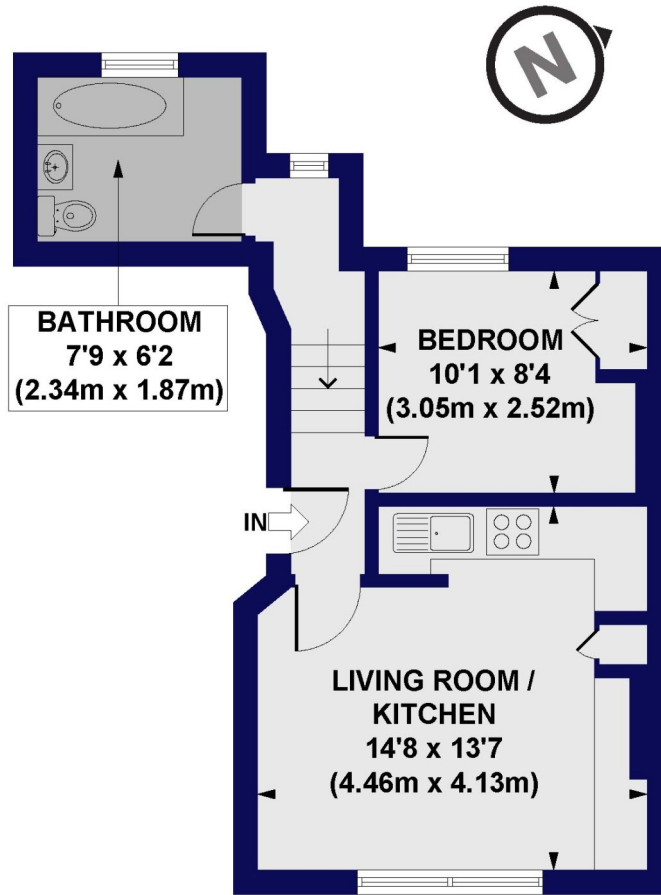
Riversdale Road is exceptionally well located for an array of local amenities as well as fantastic transport links. Highbury barn is close by as is the infamous Church Street with its selection of trendy bars, restaurants and boutique design and clothes shops. Clissold Park is just moments away whilst the Castle climbing centre and West reservoir for sailing and canoeing are also close by. Arsenal tube station provides the closest underground links on the Piccadilly line whilst Finsbury Park is also within easy reach providing over ground services and the Victoria line tube. Buses on Blackstock road and Green lanes make access to the City and Upper Street effortless and international travel and be accessed from Kings Cross St Pancras.

Winkworth



Winkworth

Riversdale Road, N5
 Approx. Gross Internal Floor Area 370 sq. ft / 34.42 sq. m

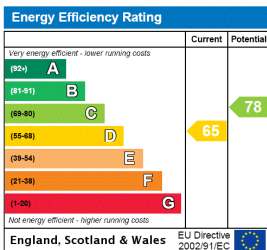


FIRST FLOOR

All measurements of walls, doors, windows, fittings and appliances, including their size and location, are shown as standard sizes and do not constitute any warranty or representation by the seller, their agent or CP Creative. Any intending purchaser must satisfy himself by inspection or otherwise as to the correctness of the information contained in these plans. This plan is for illustrative purposes only and should be used as such by any prospective purchasers.

Winkworth

This floorplan is for illustration purposes only and is not to scale. The position and size of doors, windows, appliances and other features are approximate.



Highbury | 0207 989 7000 | highbury@winkworth.co.uk



winkworth.co.uk

See things differently

Winkworth wishes to inform prospective buyers and tenants that these particulars are a guide and act as information only. All our details are given in good faith and believed to be correct at the time of printing but they don't form part of an offer or contract. No Winkworth employee has authority to make or give any representation or warranty in relation to this property. All fixtures and fittings, whether fitted or not are deemed removable by the vendor unless stated otherwise and room sizes are measured between internal wall surfaces, including furnishings.