



## INGLETHORPE STREET, SW6 £8,000 PER MONTH UNFURNISHED

An outstanding five-bedroom family house combining elegant period features with modern living and offering spacious and well-appointed accommodation across three floors.

Fulham & Parsons Green | 020 7731 3388 | [fulham@winkworth.co.uk](mailto:fulham@winkworth.co.uk)

Tenant Fees Apply: Details of fees for tenant referencing, tenancy agreement admin fees and renewal fees are available on the Winkworth website and the link can be found with the displayed rent for the property. Tenants should ensure they are fully conversant with these upfront fees and other costs that are involved at the outset of the tenancy before making an offer to rent and your local Winkworth office will provide written details upon request.

[winkworth.co.uk](http://winkworth.co.uk)

**Winkworth**

for every step...



The entrance hall, featuring decorative tiles, leads into a double reception room that showcases the home's original character, with high ceilings, detailed cornicing, and built-in bespoke cabinetry. A southerly-facing bay window allows ample natural light to fill the space. The front area of this room serves as a sitting room which benefits from a gas wood burner. And, the rear area of this room functions perfectly as a study or hall area, with a built-in pull-out desk for versatility.

Discreet double doors open up to the impressive 30-foot kitchen and dining area. The bespoke two-tone kitchen features quartz countertops, brass fittings, and high-end appliances, including a large range oven and an additional oven in the central island. The design encourages a seamless flow between cooking and entertaining, while bi-folding doors offer direct access to the 54-foot landscaped garden. This outdoor space is perfect for enjoying afternoon sun and outdoor dining and also includes a useful storage shed. A guest cloakroom can also be found on the ground floor.

On the first floor, the spacious master bedroom is a serene retreat, complete with a walk-through wardrobe area leading to a luxurious en suite bathroom. The bathroom boasts dual sinks, a rain shower, and a freestanding bath. Also on this floor is a second double bedroom which is served by a family bathroom. There is also a utility cupboard.

The top floor acts as the perfect floor to house children with three additional double bedrooms, one of which offers substantial eaves storage. The bedrooms are served by a bathroom.

Overall, the property blends its Victorian charm with contemporary comforts, providing a practical yet stylish home well-suited for family life.

Inglethorpe Street is one of the extremely sought after "Alphabet Streets" quietly located near the river and Bishops Park. There is an excellent selection of nursery and primary schools including Tug Boats, Melrose House, Fulham Prep, Parsons Green Prep as well as being within the catchment area of St Johns & All Saints Primary School.



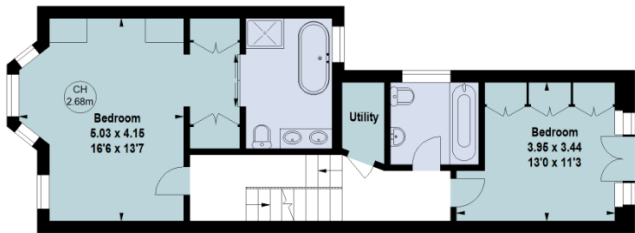


## Inglethorpe Street, SW6

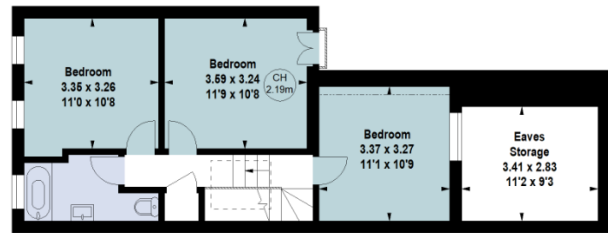
Gross internal area (approx) 197.51 sq m / 2126 sq ft  
(Excluding eaves storage & restricted height under 1.5m 10.31 sq m / 111 sq ft)



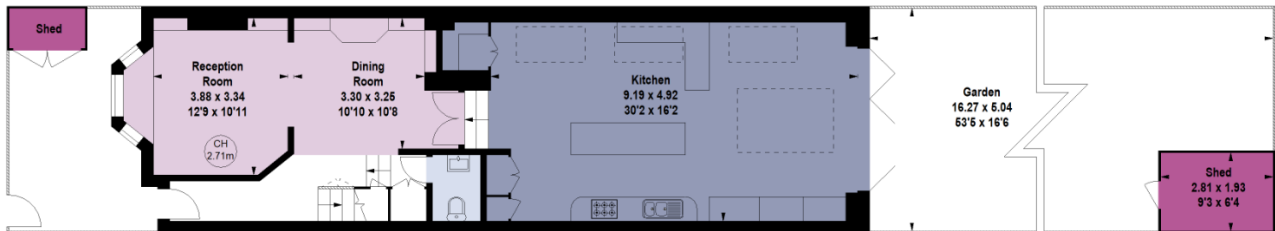
Key:  
CH - Ceiling Height



First Floor



Second Floor



Ground Floor

For Identification Only. Not To Scale.

© Click London Limited

This floorplan is for illustration purposes only and is not to scale. The position and size of doors, windows, appliances and other features are approximate.

Fulham & Parsons Green | 020 7731 3388 | fulham@winkworth.co.uk

**Winkworth**

for every step...

[winkworth.co.uk](http://winkworth.co.uk)

Winkworth wishes to inform prospective buyers and tenants that these particulars are a guide and act as information only. All our details are given in good faith and believed to be correct at the time of printing but they don't form part of an offer or contract. No Winkworth employee has authority to make or give any representation or warranty in relation to this property. All fixtures and fittings, whether fitted or not are deemed removable by the vendor unless stated otherwise and room sizes are measured between internal wall surfaces, including furnishings.