

LOUISVILLE ROAD, WANDSWORTH, SW17
£1,195,000 SHARE OF FREEHOLD

AN IMMACULATELY PRESENTED THREE-BEDROOM GARDEN FLAT.

Tooting | 020 8767 5221 | tooting@winkworth.co.uk

Winkworth

for every step...

winkworth.co.uk



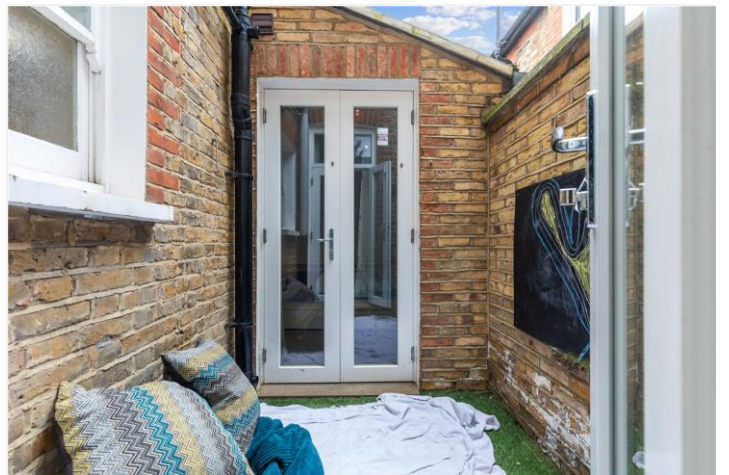
DESCRIPTION:

Introducing a stunning and meticulously renovated Victorian three-bedroom garden flat. This home has been renovated to an exceptional standard and recently repainted throughout. As you approach this exquisite property, you are greeted by a charming and well-tended front garden with the traditional Heaver Estate railings.

Upon entry, you'll find a bright master bedroom featuring built-in wardrobes, an original Victorian fireplace, and double-glazed windows with original stained glass. There are two additional bedrooms, one with built-in wardrobes, both offering access to a quaint patio area. The property boasts a luminous family bathroom with generous storage, modern fixtures, Italian marble countertops, along with a separate WC.

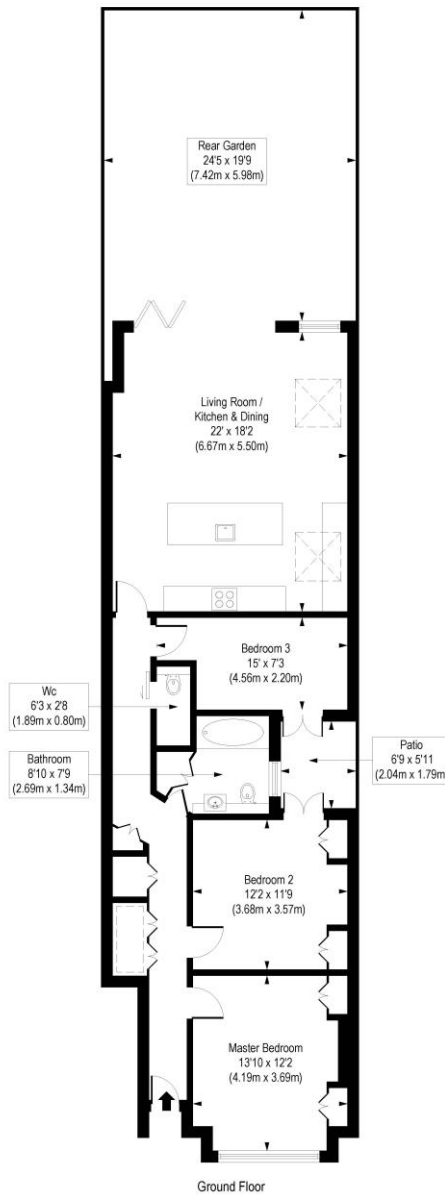
At the rear, you'll discover a spacious and radiant open-plan living, kitchen, and dining area, complete with high-end walnut flooring and underfloor heating. The living area features two electric skylights that flood the space with natural light highlighting the exposed brickwork. The modern kitchen is a chef's dream, with Italian marble worktops, ample storage, integrated appliances, a striking tiled splashback, and a large island. Bi-folding doors open to a well maintained south-facing garden, perfect for family life and entertaining.

Louisville Road is a popular residential street, nestled between Balham High Road and Elmbourne Road in Tooting's highly sought-after Heaver Estate. Tooting Bec underground station (Northern Line) is just moments away, along with an array of shops, bars, and restaurants in the vibrant local area.



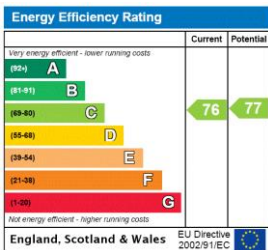
Louisville Road, SW17

Approx. Gross Internal Floor Area 1065 sq. ft / 98.98 sq. m



COMPLIANT WITH RICS CODE OF MEASURING PRACTICE. Floorplan is for illustrative purposes only and is not to scale. Every attempt has been made to ensure the accuracy of the floorplan shown, however all measurements, fixtures, fittings and data shown are an approximate interpretation for illustrative purposes only. Liability for errors, omissions or mis-statement through negligence or otherwise is hereby excluded.

This floorplan is for illustration purposes only and is not to scale. The position and size of doors, windows, appliances and other features are approximate.



Tooting | 020 8767 5221 | tooting@winkworth.co.uk

for every step...

winkworth.co.uk

Winkworth wishes to inform prospective buyers and tenants that these particulars are a guide and act as information only. All our details are given in good faith and believed to be correct at the time of printing but they don't form part of an offer or contract. No Winkworth employee has authority to make or give any representation or warranty in relation to this property. All fixtures and fittings, whether fitted or not are deemed removable by the vendor unless stated otherwise and room sizes are measured between internal wall surfaces, including furnishings.