



PELHAM COURT, CHELSEA, SW3
£895 PW / £3,878.33 PCM

FURNISHED OR UNFURNISHED

A SPACIOUS TWO DOUBLE BEDROOM APARTMENT LOCATED IN THE HEART OF CHELSEA

Knightsbridge & Chelsea | 0207 589 6616 | knightsbridge@winkworth.co.uk

Winkworth

Tenant Fees Apply: Details of fees for tenant referencing, tenancy agreement admin fees and renewal fees are available on the Winkworth website and the link can be found with the displayed rent for the property. Tenants should ensure they are fully conversant with these upfront fees and other costs that are involved at the outset of the tenancy before making an offer to rent and your local Winkworth office will provide written details upon request.

winkworth.co.uk

See things differently



DESCRIPTION:

This spacious first floor, two double bedroom (820 sq ft) apartment, located in the heart of Chelsea, is now available to rent.

The apartment comprises of two double bedrooms and a good sized reception/dining room with views over the communal gardens to the rear. The flat also benefits from separate kitchen, 1 bathroom and one guest WC, as well as ample storage space.

The property is available to rent furnished or unfurnished.

Winkworth

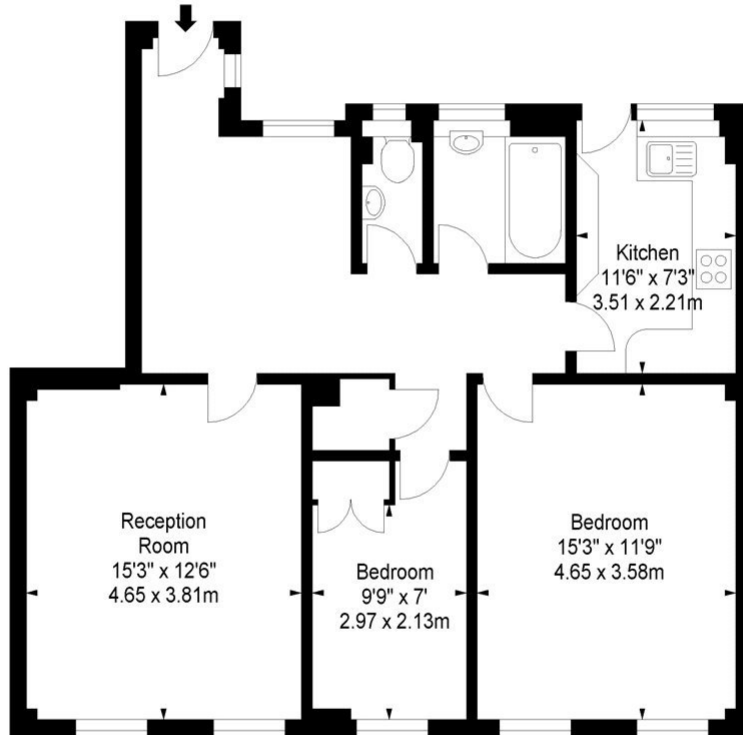


Winkworth

27 PELHAM COURT, SW3

APPROX. GROSS INTERNAL AREA*
820 Ft² - 76.18 M²

ILLUSTRATION FOR IDENTIFICATION PURPOSES ONLY. NOT TO SCALE
* As Defined by RICS - Code of Measuring Practice



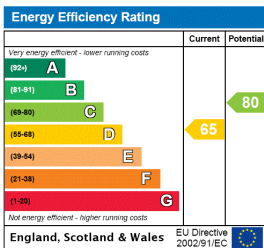
FIRST FLOOR

BKR

www.bkrfloorplans.co.uk
T. 0045 257 2023
© BKR 2010

[1.3.2.18] [Pelham Court 27.pdf] [Page 1 of 1]

This floorplan is for illustration purposes only and is not to scale. The position and size of doors, windows, appliances and other features are approximate.



Knightsbridge & Chelsea | 0207 589 6616 | knightsbridge@winkworth.co.uk

Winkworth

winkworth.co.uk

See things differently

Winkworth wishes to inform prospective buyers and tenants that these particulars are a guide and act as information only. All our details are given in good faith and believed to be correct at the time of printing but they don't form part of an offer or contract. No Winkworth employee has authority to make or give any representation or warranty in relation to this property. All fixtures and fittings, whether fitted or not are deemed removable by the vendor unless stated otherwise and room sizes are measured between internal wall surfaces, including furnishings.