



PELHAM COURT, LONDON, SW3

£970 PER WEEK FURNISHED, PART FURNISHED, UNFURNISHED

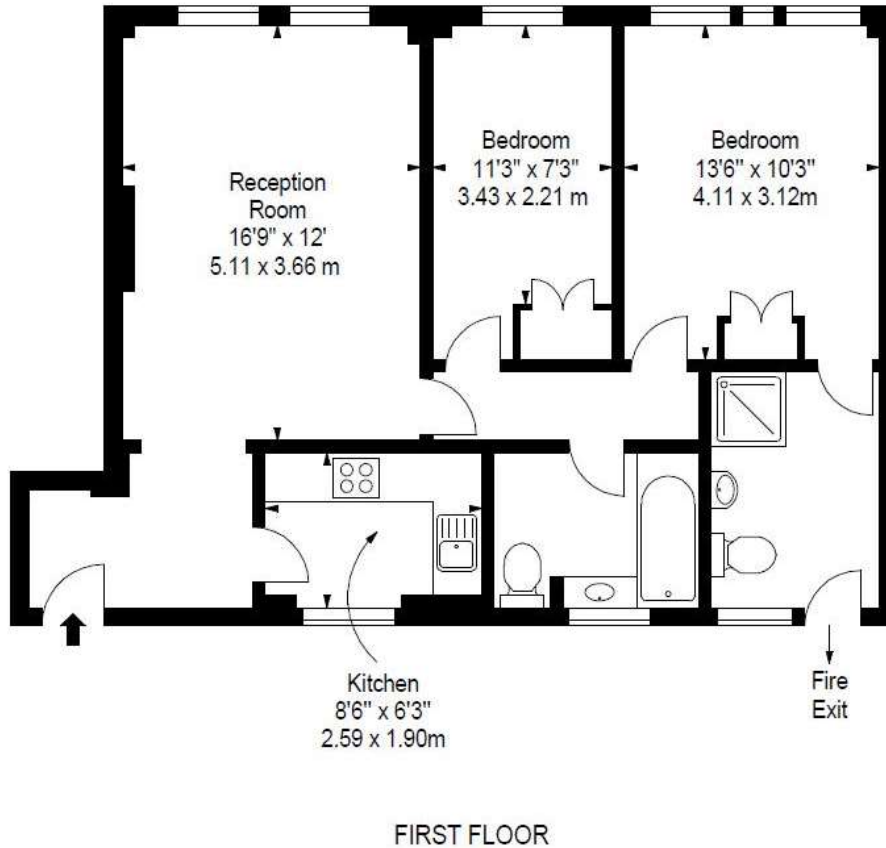
A SPACIOUS TWO BEDROOM FLAT LOOKING DIRECTLY OUT ON TO THE PRIVATE COMMUNAL GARDENS OF PELHAM COURT.

Knightsbridge & Chelsea, 0207 589 6616, knightsbridge@winkworth.co.uk

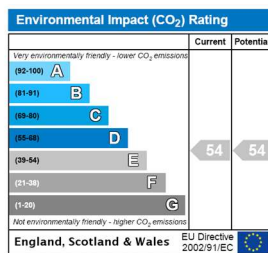
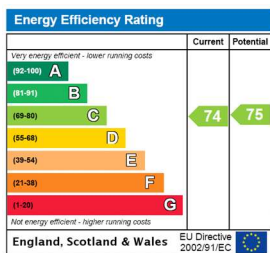
Tenant Fees Apply: Details of fees for tenant referencing, tenancy agreement admin fees and renewal fees are available on the Winkworth website and the link can be found with the displayed rent for the property. Tenants should ensure they are fully conversant with these upfront fees and other costs that are involved at the outset of the tenancy before making an offer to rent and your local Winkworth office will provide written details upon request.

DESCRIPTION:

A spacious two-bedroom flat looking directly out on to the private communal gardens of Pelham Court. The property is available to rent furnished or unfurnished. Pelham Court offers residents many features associated with a Chelsea lifestyle, including an on-site porter and private communal gardens for sole use of tenants.



This floorplan is for illustration purposes only and is not to scale. The position and size of doors, windows, appliances and other features are approximate.



Deposit: £4,850.00

Holding Deposit: £970.00

Council Tax Band: E

Where no figures are shown, we have been unable to ascertain the information. All figures that are shown were correct at the time of printing.