



GLOUCESTER ROAD, BERKSHIRE, RG30 2TH  
**£1,300 PER MONTH UNFURNISHED**

**A CHARACTERFUL AND WELL PRESENTED  
 TWO BEDROOM SPLIT LEVEL MAISONETTE A  
 MILE FROM READING TOWN CENTRE.**

Reading | 0118 4022 300 | [reading@winkworth.co.uk](mailto:reading@winkworth.co.uk)

**Winkworth**

for every step...

[winkworth.co.uk](http://winkworth.co.uk)





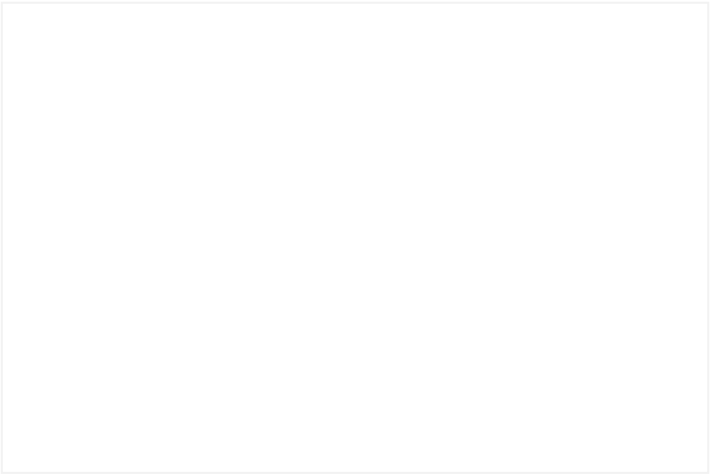
## DESCRIPTION:

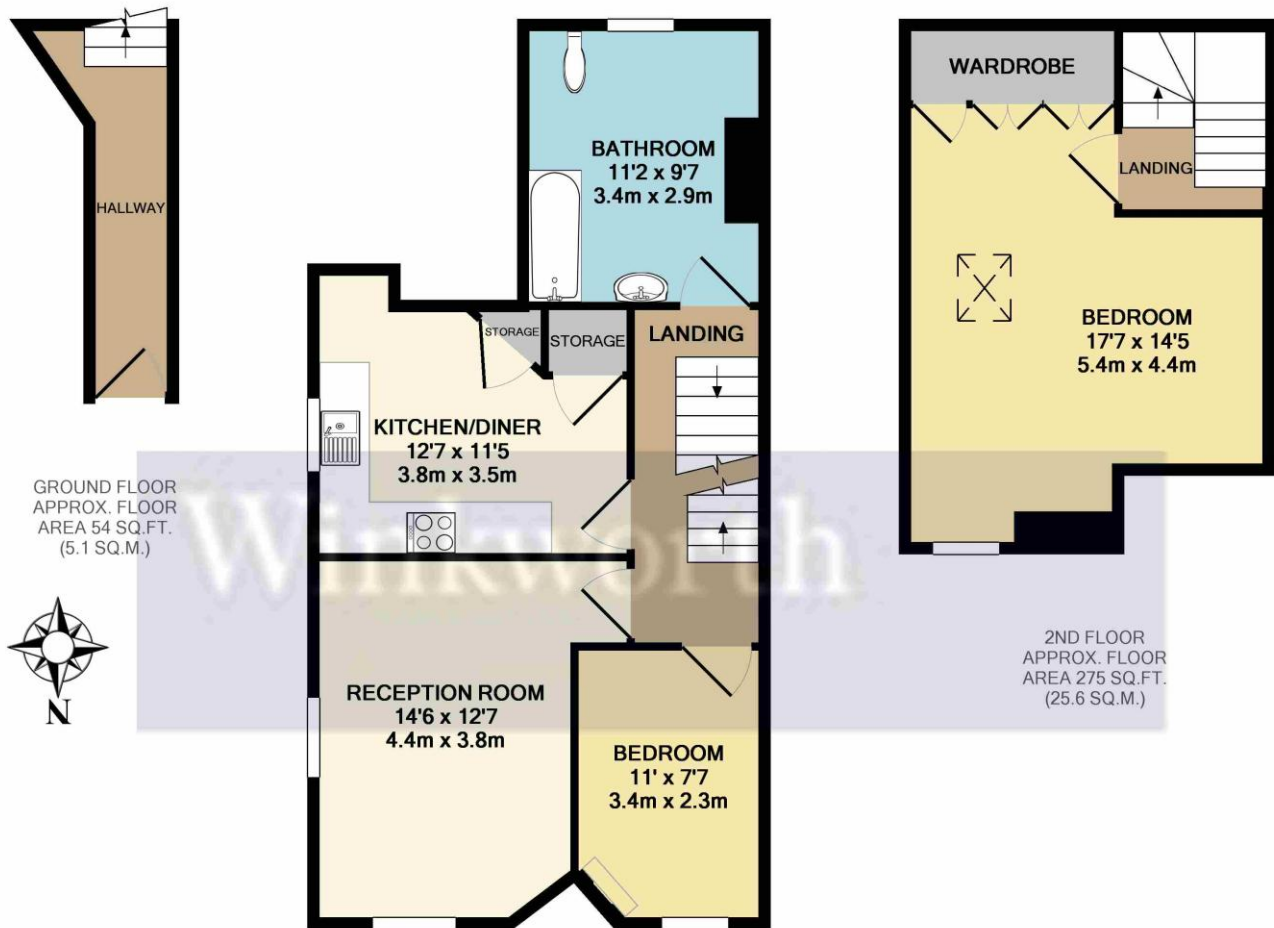
A characterful two bedroom split level maisonette located a mile from Central Reading offering great transport links and access to local amenities. Living accommodation is set over three floors with an entry hall on the ground floor. A lounge with dual aspect windows, fitted kitchen/breakfast room, bedroom and a generous bathroom on the first floor and a large double bedroom with built in wardrobes on the top floor. The property further benefits from gas central heating and on road permit parking. Available now. Unfurnished.

## AT A GLANCE

- Period Conversion Set Over Three Floors
- Two Bedrooms
- Council tax band B
- On road permit parking
- Available now
- Unfurnished

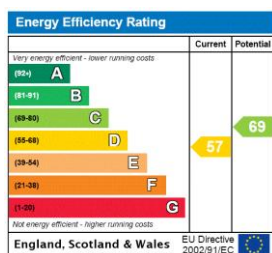






Whilst every attempt has been made to ensure the accuracy of the floor plan contained here, measurements of doors, windows, rooms and any other items are approximate and no responsibility is taken for any error, omission, or mis-statement. This plan is for illustrative purposes only and should be used as such by any prospective purchaser. The services, systems and appliances shown have not been tested and no guarantee as to their operability or efficiency can be given  
Made with Metropix ©2019

This floorplan is for illustration purposes only and is not to scale. The position and size of doors, windows, appliances and other features are approximate.



**Deposit:** £1,500.00

**Holding Deposit:** £300.00

**Council Tax Band:** B

Where no figures are shown, we have been unable to ascertain the information. All figures that are shown were correct at the time of printing.

Reading | 0118 4022 300 | [reading@winkworth.co.uk](mailto:reading@winkworth.co.uk)

**Winkworth**

for every step...

[winkworth.co.uk](http://winkworth.co.uk)

Winkworth wishes to inform prospective buyers and tenants that these particulars are a guide and act as information only. All our details are given in good faith and believed to be correct at the time of printing but they don't form part of an offer or contract. No Winkworth employee has authority to make or give any representation or warranty in relation to this property. All fixtures and fittings, whether fitted or not are deemed removable by the vendor unless stated otherwise and room sizes are measured between internal wall surfaces, including furnishings.