

BLAIR AVENUE, KINGSBURY, LONDON, NW9  
**£750,000 FREEHOLD**

## GORGEOUS EXTENDED CHAIN FREE BUNGALOW

Kingsbury | 020 8204 0000 | [kingsbury@winkworth.co.uk](mailto:kingsbury@winkworth.co.uk)



for every step...

[winkworth.co.uk](http://winkworth.co.uk)



Nestled in a sought-after residential area in the Welsh Harp Reservoir, this charming 4-bedroom semi-detached bungalow offers a perfect blend of modern luxury and homely comfort. The property boasts a peaceful and quiet ambiance, ideal for those seeking a tranquil living environment. Featuring a bright and airy interior, the spacious rooms are elegantly designed to create a cosy and welcoming atmosphere. The property further benefits from a well-maintained courtyard, providing a relaxing outdoor space to unwind and entertain. With off-street parking via shared driveway and a spacious outbuilding, convenience is at the forefront of this home. Additionally, an outbuilding offers additional storage or workspace options. This property presents an excellent opportunity for those looking for a stylish and comfortable residence in a desirable location. Don't miss the chance to make this beautiful house your home. Contact us today to arrange a viewing.



for every step...



**Winkworth**

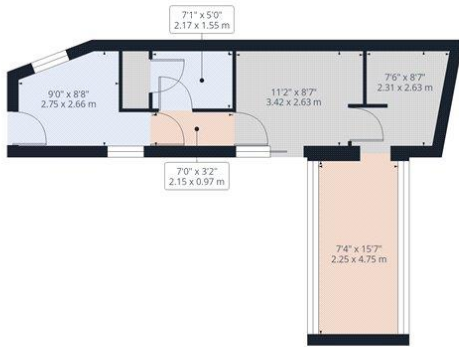
for every step...



Ground Floor Building 1



Floor 1 Building 1



Ground Floor Building 2

**Approximate total area<sup>(1)</sup>**

1670.88 ft<sup>2</sup>  
155.23 m<sup>2</sup>

**Reduced headroom**

93.32 ft<sup>2</sup>  
8.67 m<sup>2</sup>

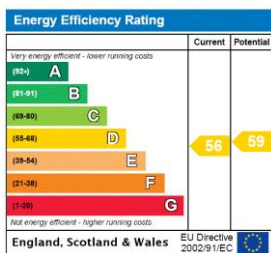
(1) Excluding balconies and terraces

Reduced headroom  
..... Below 5 ft/1.5 m

While every attempt has been made to ensure accuracy, all measurements are approximate, not to scale. This floor plan is for illustrative purposes only.  
Calculations are based on RICS IPMS 3C standard.

GIRAFFE360

This floorplan is for illustration purposes only and is not to scale. The position and size of doors, windows, appliances and other features are approximate.



**Tenure:** Freehold

**Council Tax Band:** D - Brent

Where no figures are shown, we have been unable to ascertain the information. All figures that are shown were correct at the time of printing.

Kingsbury | 020 8204 0000 | kingsbury@winkworth.co.uk

**Winkworth**

for every step...

winkworth.co.uk

Winkworth wishes to inform prospective buyers and tenants that these particulars are a guide and act as information only. All our details are given in good faith and believed to be correct at the time of printing but they don't form part of an offer or contract. No Winkworth employee has authority to make or give any representation or warranty in relation to this property. All fixtures and fittings, whether fitted or not are deemed removable by the vendor unless stated otherwise and room sizes are measured between internal wall surfaces, including furnishings.