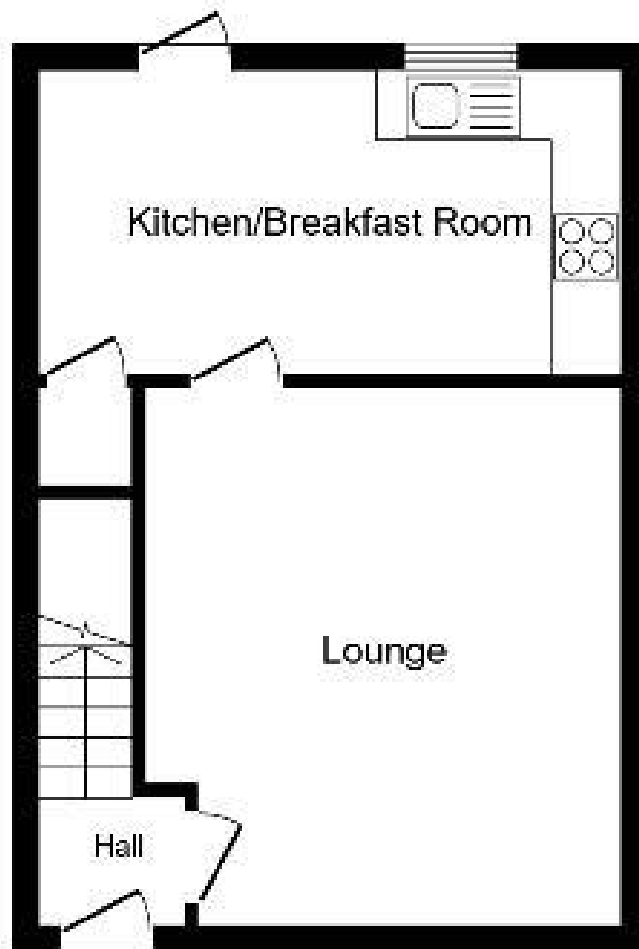
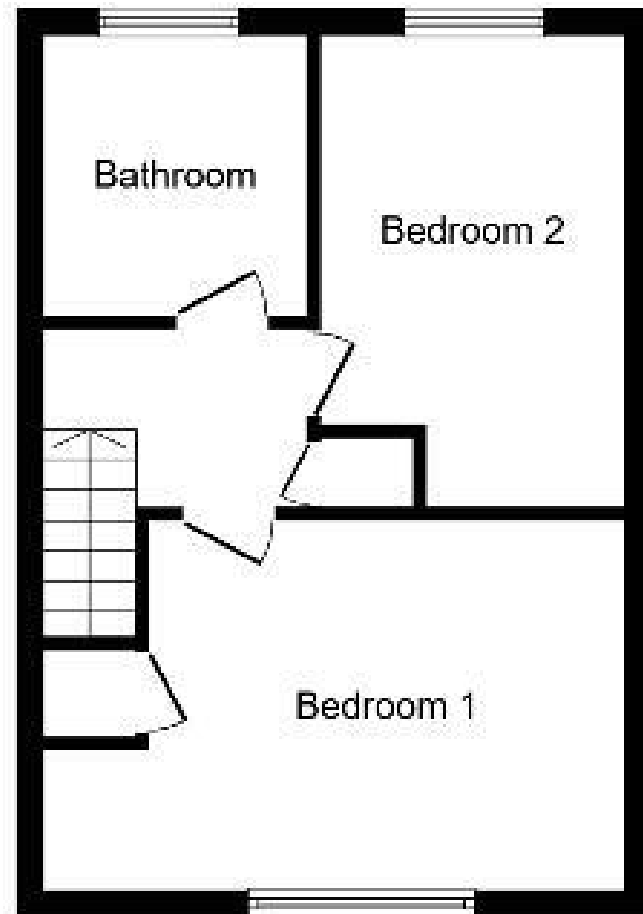


Energy Efficiency Rating		Current	Potential
Very energy efficient - lower running costs			
(92-)	A		
(81-91)	B		90
(69-80)	C	73	
(55-68)	D		
(39-54)	E		
(21-38)	F		
(1-20)	G		
Not energy efficient - higher running costs			
England, Scotland & Wales		EU Directive 2002/91/EC	



Ground Floor

Floor area 36.1 m² (389 sq.ft.)



First Floor

Floor area 36.1 m² (389 sq.ft.)



2 Norman Mews, Bourne, Lincolnshire, PE10 9TH

£165,000 Freehold

PRICED TO SELL! This very well presented two bedroom terraced home that would make an excellent first time purchase or buy to let investment. Located within walking distance of the town centre the property benefits from, entrance hall with stairs to the first floor, lounge, modern fitted kitchen/dining room, two bedrooms and bathroom. The property also benefits from upvc double glazed windows and gas central heating to radiators. Outside there is a fully enclosed lawned garden with rear access plus allocated off road parking.

Winkworth Bourne | 01778392807 |
bourne@winkworth.co.uk
winkworth.co.uk/bourne

Under the Property Misdescriptions Act 1991, the Particulars are a guide and act as information only. All details are given in good faith and are believed to be correct at time of printing. Winkworth give no representation as to their accuracy and potential purchasers or tenants must satisfy themselves by inspection or otherwise as to their correctness. No employee at Winkworth has authority to make or give any representation or warranty in the relation to this property.

Winkworth

winkworth.co.uk/bourne

See things differently.



Bathroom - Comprising three piece suite: low level WC, wash hand basin, bath with shower over, radiator, UPVC double glazed window to the rear.

Outside - The rear garden is mainly lawned and fully enclosed by fencing with gate to the rear providing rear access. There is also a allocated off road parking space.



LOCAL AUTHORITY

South Kesteven District Council

TENURE

Freehold

COUNCIL TAX BAND

A

ACCOMMODATION

Entrance Hall - New carpet, radiator, door to lounge and stairs to first floor.

Lounge - 13'5" x 10'11" (4.1m x 3.33m) UPVC double glazed window to the front, new carpets, radiator, tv point.

Kitchen/Dining Room - 14'3" x 7'8" (4.34m x 2.34m) Refitted with a modern range of base and eye level units with work tops over, space for cooker, stainless steel single sink and drainer, space for kitchen table, large under stairs storage cupboard, double radiator, UPVC double glazed window and patio doors to the rear garden.

First Floor Landing - Airing cupboard, radiator and access to the loft.

Bedroom One - 10'1" x 10' (3.07m x 3.05m) Exposed floorboards, radiator, over stairs storage cupboard, UPVC double glazed window to the front.

Bedroom Two - 11'2" x 7'3" (3.4m x 2.2m) Exposed wooden floor, radiator, UPVC double glazed window to the rear

