



15 CHIVERS DRIVE, FINCHAMPSTEAD, WOKINGHAM, BERKSHIRE, RG40 4EW

**£695,000 FREEHOLD**

SITUATED ON A PRIVATE PLOT IN THIS POPULAR AND SOUGHT-AFTER LOCATION, WITH GOOD ACCESS TO CALIFORNIA COUNTRY PARK.

**Winkworth**

Wokingham | 01189 072777 | [wokingham@winkworth.co.uk](mailto:wokingham@winkworth.co.uk)

for every step...

[winkworth.co.uk](http://winkworth.co.uk)





#### DESCRIPTION:

Situated on a private plot in this popular and sought-after location, with good access to California Country Park and further amenities including the Finchampstead FBC centre, local shops, post office and restaurants, is this well presented family home with no onward chain complications.

The property provides well proportioned accommodation over two floors, with living space on the ground floor which consists of a study, dining room, kitchen/breakfast room, utility, cloakroom and an excellent sized living room. There is a private and secluded rear garden which is accessible from the dining room and utility.

On the first floor there are four good sized bedrooms a family bathroom and an en-suite to the master bedroom.

Falling within popular school catchment areas, including Bohunt Secondary School, and offering easy access to the M3 & M4 motorway as well as Wokingham mainline railway station the property is sure to be of interest to a wide range of prospective purchasers.

#### AT A GLANCE

- 4 Bedroom detached family home
- 3 reception rooms
- Double Garage
- Generous garden
- Cul de sac location
- Council tax band F Wokingham
- Broadband Ultrafast 1000 Mbps available
- Satellite /Fibre TV with BT & Sky
- All mains services
- Mobile coverage EE, Vodafone, Three, O2

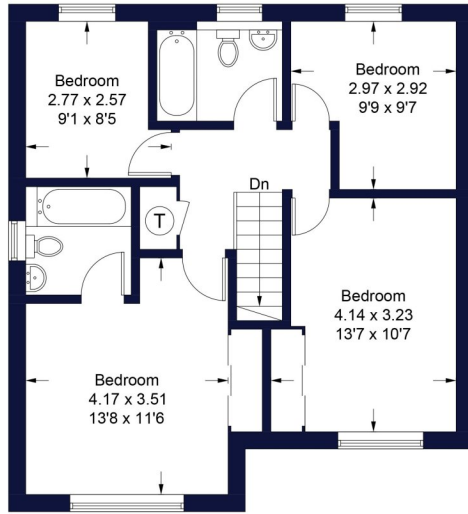




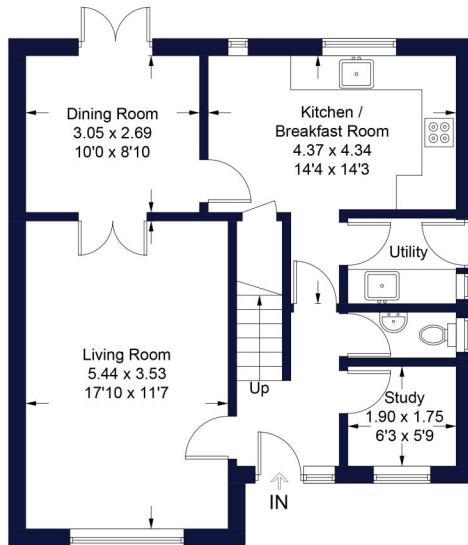
# Chivers Drive

Approximate Gross Internal Area  
Ground Floor = 58.7 sq m / 632 sq ft  
First Floor = 58.3 sq m / 627 sq ft  
Garage = 25.7 sq m / 277 sq ft  
Total = 142.7 sq m / 1536 sq ft

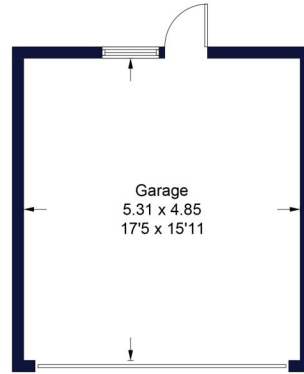
**Winkworth**



**First Floor**  
Sq m 58.3 / Sq ft 627



**Ground Floor**  
Sq m 58.7 / Sq ft 632



(Not Shown In Actual  
Location / Orientation)

Illustration for identification purposes only, measurements are approximate,  
not to scale. FloorplansUsketch.com © 2024 (ID1111902)

This floorplan is for illustration purposes only and is not to scale. The position and size of doors, windows, appliances and other features are approximate.

**Winkworth**

Wokingham | 01189 072777 | wokingham@winkworth.co.uk

for every step...

[winkworth.co.uk](http://winkworth.co.uk)

Winkworth wishes to inform prospective buyers and tenants that these particulars are a guide and act as information only. All our details are given in good faith and believed to be correct at the time of printing but they don't form part of an offer or contract. No Winkworth employee has authority to make or give any representation or warranty in relation to this property. All fixtures and fittings, whether fitted or not are deemed removable by the vendor unless stated otherwise and room sizes are measured between internal wall surfaces, including furnishings.