



Winkworth
for every step...



Winkworth
for every step...



Winkworth
for every step...

PRESTON HILL, HARROW, MIDDLESEX, HA3
£685,000 FREEHOLD

THREE BEDROOM SEMI DETACHED FAMILY HOME

Kingsbury | 020 8204 0000 | kingsbury@winkworth.co.uk

Winkworth

for every step...

winkworth.co.uk



Welcome to this charming three-bedroom semi-detached house nestled in a sought-after neighborhood, offering an ideal nest for a growing family. The ground floor hosts a double reception room offering ample entertaining space for hosting guests and family living. The kitchen provides a functional space with an abundance of integrated storage, while the adjacent diner allows a dining space seamlessly connecting to the generous and maintained garden. Upstairs boasts a simplistic family bathroom and three well-proportioned bedrooms, each providing comfortable living spaces for rest and relaxation. Additionally, there is scope to extend (STPP) allowing for future customization and expansion to suit evolving needs. Convenience is key with off-street parking and a garage, ensuring hassle-free access and ample storage space. Situated within the catchment area for esteemed schools, and close to transport links and amenities, this home offers the perfect blend of comfort and practicality. Schedule an internal viewing today and envision your forever home.



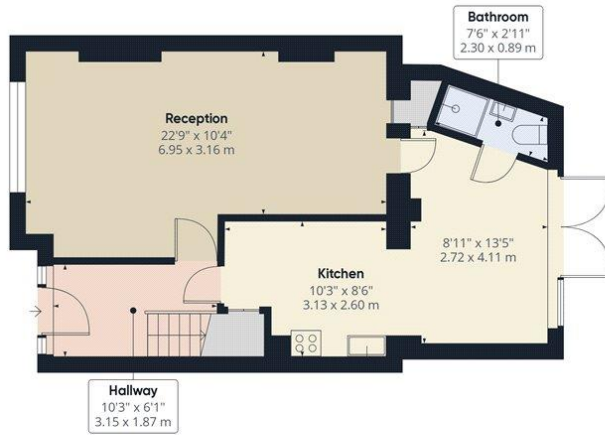
Winkworth

for every step...

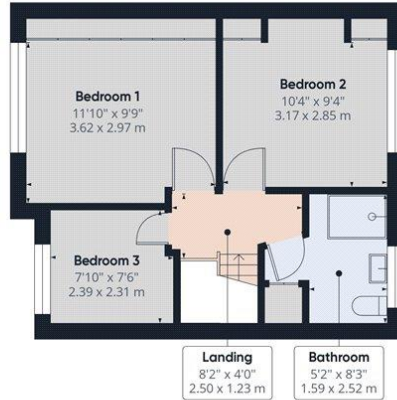


Winkworth

for every step...



Ground Floor



Floor 1

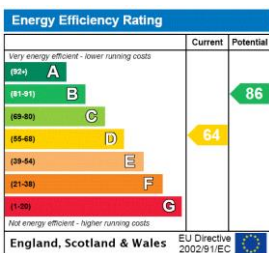
Approximate total area⁽¹⁾
957.01 ft²
88.91 m²

(1) Excluding balconies and terraces

While every attempt has been made to ensure accuracy, all measurements are approximate, not to scale. This floor plan is for illustrative purposes only. Calculations are based on RICS IPMS 3C standard.

GIRAFFE360

This floorplan is for illustration purposes only and is not to scale. The position and size of doors, windows, appliances and other features are approximate.



Tenure: Freehold

Council Tax Band: E - Brent

Where no figures are shown, we have been unable to ascertain the information. All figures that are shown were correct at the time of printing.

Kingsbury | 020 8204 0000 | kingsbury@winkworth.co.uk



for every step...

winkworth.co.uk

Winkworth wishes to inform prospective buyers and tenants that these particulars are a guide and act as information only. All our details are given in good faith and believed to be correct at the time of printing but they don't form part of an offer or contract. No Winkworth employee has authority to make or give any representation or warranty in relation to this property. All fixtures and fittings, whether fitted or not are deemed removable by the vendor unless stated otherwise and room sizes are measured between internal wall surfaces, including furnishings.