



ARUNDEL GARDENS, W11
£900 PER WEEK (£3,900 PCM) FURNISHED

A FANTASTIC OPPORTUNITY TO RENT THIS BEAUTIFUL FIRST FLOOR FLAT WITH A PRIVATE BALCONY AND ROOF TERRACE, OVERLOOKING AND WITH ACCESS TO THE HIGHLY SOUGHT-AFTER COMMUNAL GARDENS BEHIND.

Notting Hill Sales | 0207 727 3227 | nottinghill@winkworth.co.uk

Winkworth

for every step...

winkworth.co.uk



DESCRIPTION:

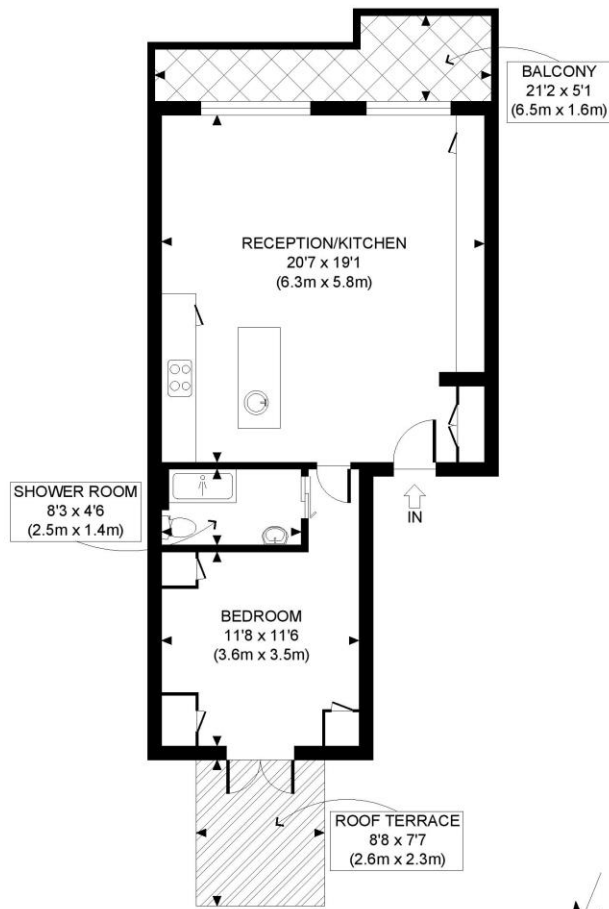
The property comprises spacious reception room with wonderful ceiling height and wood floors throughout, immaculate fully fitted open plan kitchen, stunning shower room with walk in shower and double bedroom with doors leading out to fully decked roof terrace overlooking the communal gardens (right to apply and charges will apply). The property has been refurbished to the highest of standards with fantastic storage throughout and is offered on a furnished basis. Viewing highly recommended!

LOCATION:

Arundel Gardens is an impressive and well-located residential street set between two sets of communal gardens in the heart of Notting Hill, running between Kensington Park Road and Ladbroke Grove, a short stroll from some of Notting Hill's most popular restaurants and boutiques.







FIRST FLOOR
GROSS INTERNAL
FLOOR AREA 589 SQ FT

APPROX. GROSS INTERNAL FLOOR AREA: 589 SQ FT/ 55 SQM

Winkworth

This plan is for illustrative purposes only and should be used as such by any prospective client. Whilst every attempt has been made to ensure the accuracy of the Floor Plan contained here, measurements of the doors, windows, rooms and any other items are approximate and no responsibility is taken for any errors, omissions, or misstatement. The services, systems and appliances shown have not been tested and no guarantee as to the operability or efficiency can be given.

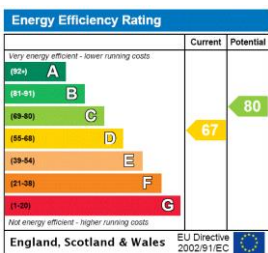
PROPERTY PHOTO PLANS COUK
THE STOP SHOP FOR PROPERTY PHOTOGRAPHERS

This floorplan is for illustration purposes only and is not to scale. The position and size of doors, windows, appliances and other features are approximate.

Deposit: £4,500 (5 weeks rent)

Council Tax Band: Royal Borough of Kensington & Chelsea (Band F)

Where no figures are shown, we have been unable to ascertain the information. All figures that are shown were correct at the time of printing.



Notting Hill Sales | 0207 727 3227 | nottinghill@winkworth.co.uk

Winkworth

for every step...

winkworth.co.uk

Winkworth wishes to inform prospective buyers and tenants that these particulars are a guide and act as information only. All our details are given in good faith and believed to be correct at the time of printing but they don't form part of an offer or contract. No Winkworth employee has authority to make or give any representation or warranty in relation to this property. All fixtures and fittings, whether fitted or not are deemed removable by the vendor unless stated otherwise and room sizes are measured between internal wall surfaces, including furnishings.