



**WELBECK ROAD, MIDDLESEX, HA2**  
**OIEO £550,000 FREEHOLD**

**MAKE THIS HOUSE YOUR OWN!**

**Tenure: Freehold**  
**EPC Rating: D**  
**Council Tax Band: E (London Borough of Harrow)**

**Harrow | 020 8861 3933 | harrow@winkworth.co.uk**



### DESCRIPTION:

Located in a sought after part of South Harrow, this charming semi-detached house, in need of modernisation throughout, is an ideal blank canvas to showcase your own personal style and flair.

The property features a spacious living room, dining room, kitchen, bathroom with separate toilet, three generous bedrooms and a large family garden, perfect for relaxing on those hot summer days.

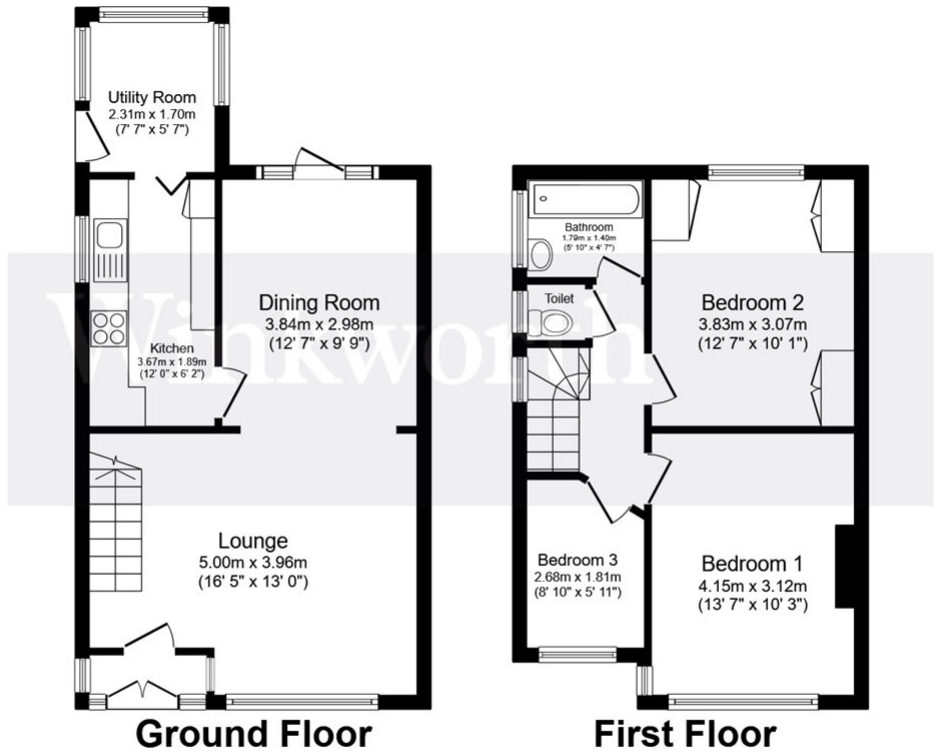
As the house has not been extended, purchasers can benefit from the scope to extend (subject to planning permission).

With easy access to local amenities, schools, and transport links, this property offers both comfort and practicality.

Don't miss the opportunity to make this wonderful house your new home.







Total floor area 82.0 m<sup>2</sup> (882 sq.ft.) approx

This floor plan is for illustrative purposes only. It is not drawn to scale. Any measurements, floor areas (including any total floor area), openings and orientation are approximate. No details are guaranteed, they cannot be relied upon for any purpose and they do not form part of any agreement. No liability is taken for any error, omission or misstatement. A party must rely upon its own inspection(s). Powered by [www.focalagent.com](http://www.focalagent.com)

This floorplan is for illustration purposes only and is not to scale. The position and size of doors, windows, appliances and other features are approximate.

