



**BRIDPORT PLACE, LONDON, N1**  
**£550 PER WEEK FURNISHED, PART FURNISHED**

**A SUPERB TWO BEDROOM APARTMENT POSITIONED  
IN A HIGHLY SOUGHT AFTER AREA BETWEEN OLD  
STREET AND ISLINGTON.**

Islington | 0207 354 2480 | [islington@winkworth.co.uk](mailto:islington@winkworth.co.uk)

**Winkworth**

Tenant Fees Apply: Details of fees for tenant referencing, tenancy agreement admin fees and renewal fees are available on the Winkworth website and the link can be found with the displayed rent for the property. Tenants should ensure they are fully conversant with these upfront fees and other costs that are involved at the outset of the tenancy before making an offer to rent and your local Winkworth office will provide written details upon request.

[winkworth.co.uk](http://winkworth.co.uk)

See things differently



## DESCRIPTION:

A superb two bedroom apartment positioned in a highly sought after area between Old Street and Islington. This spacious property boasts two bedrooms and two bathrooms along with a generous open plan kitchen and living space and private garden. Bridport Place is a quiet cul-de-sac located on the east side of Shoreditch Park and is ideally situated between Old Street, Islington, Shoreditch and the City; all of which supply their unique variety of local boutiques, cafes, restaurants and galleries. The closest underground stations are Old Street (Northern Line) or Hoxton over ground station (East London Line), both of which are within easy reach. There are also a selection of good bus routes along New North Road to Angel, Dalston and the City.

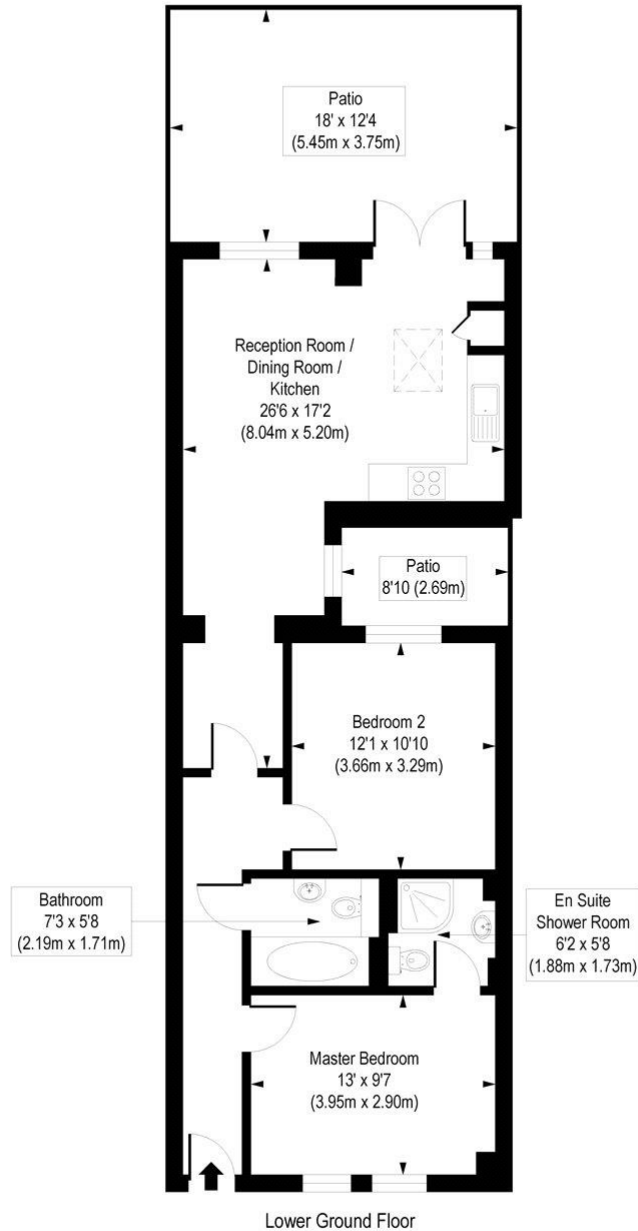
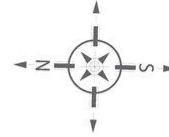
**Winkworth**



**Winkworth**

# Bridport Place, N1

Approx. Gross Internal Floor Area 742 sq. ft / 68.98 sq. m



COMPLIANT WITH RICS CODE OF MEASURING PRACTICE. Floorplan is for illustrative purposes only and is not to scale. Every attempt has been made to ensure the accuracy of the floorplan shown, however all measurements, fixtures, fittings and data shown are an approximate interpretation for illustrative purposes only. Liability for errors, omissions or mis-statement through negligence or otherwise is hereby excluded.

This floorplan is for illustration purposes only and is not to scale. The position and size of doors, windows, appliances and other features are approximate.

Islington | 0207 354 2480 | [islington@winkworth.co.uk](mailto:islington@winkworth.co.uk)

**Winkworth**

[winkworth.co.uk](http://winkworth.co.uk)

See things differently

Winkworth wishes to inform prospective buyers and tenants that these particulars are a guide and act as information only. All our details are given in good faith and believed to be correct at the time of printing but they don't form part of an offer or contract. No Winkworth employee has authority to make or give any representation or warranty in relation to this property. All fixtures and fittings, whether fitted or not are deemed removable by the vendor unless stated otherwise and room sizes are measured between internal wall surfaces, including furnishings.