



ALDER HOUSE, READING, BERKSHIRE, RG1 2AR
£1,650 PER MONTH FURNISHED

**MODERN TWO BEDROOM APARTMENT
LOCATED IN THE TOWN CENTRE. AVAILABLE
NOW.**

Reading | 0118 4022 300 | reading@winkworth.co.uk

Winkworth

for every step...

winkworth.co.uk



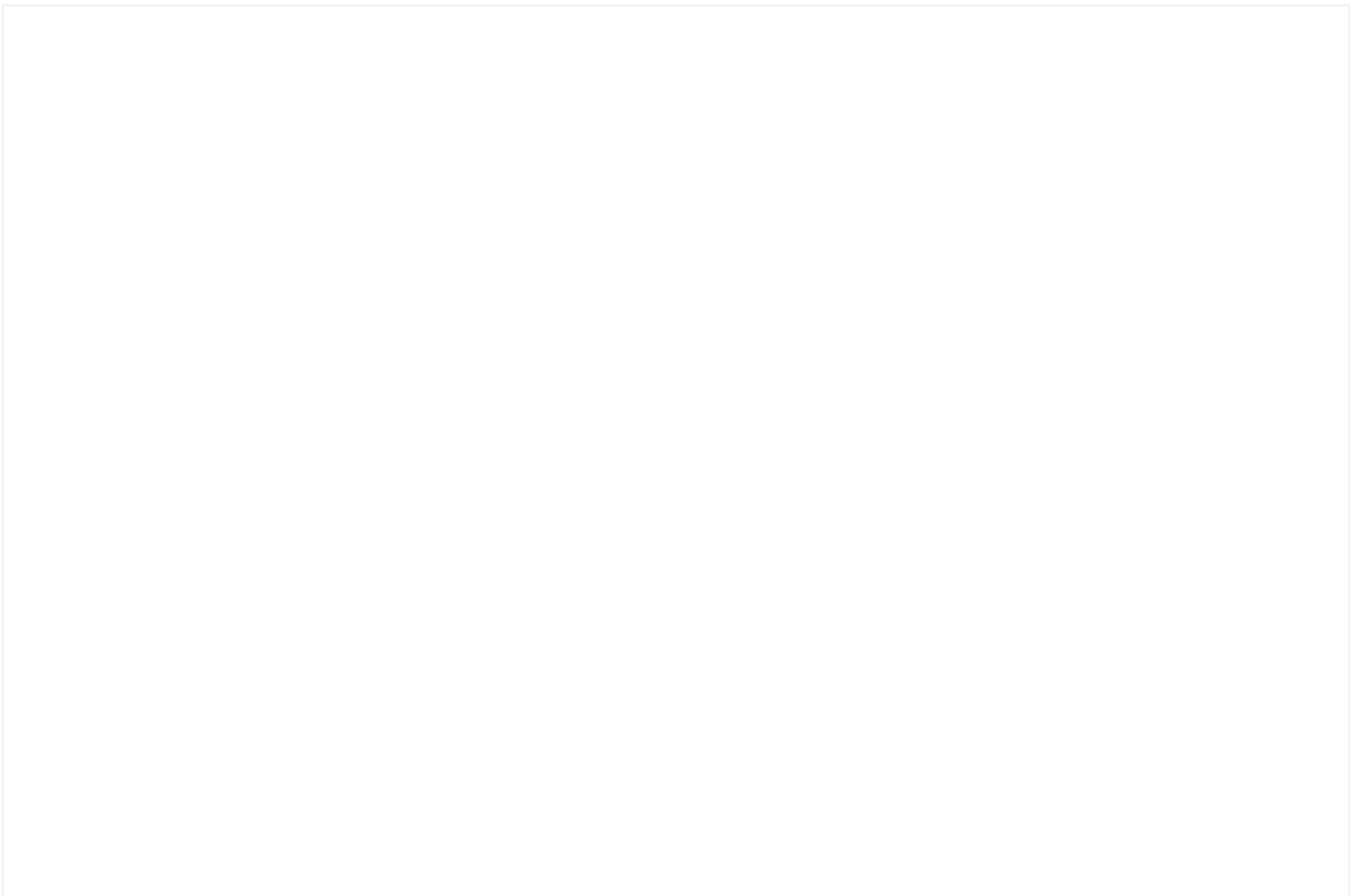
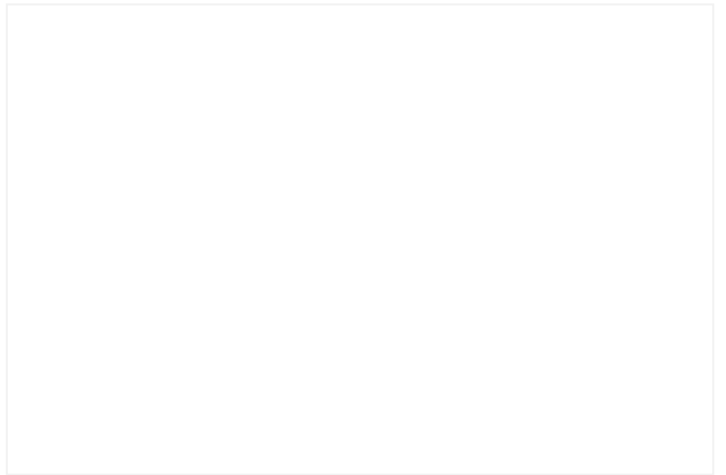
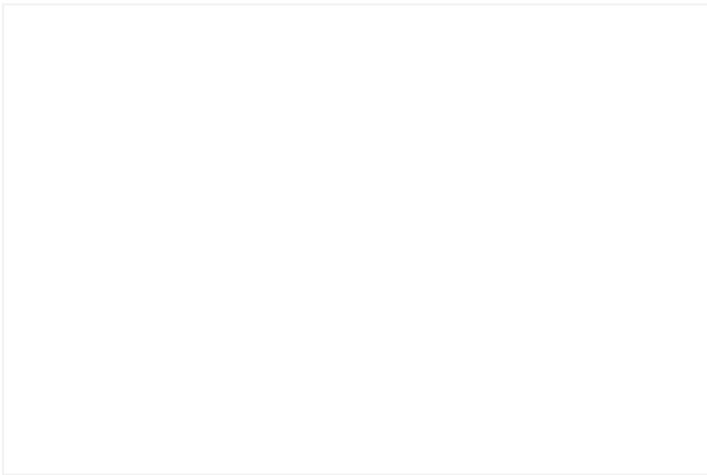
DESCRIPTION:

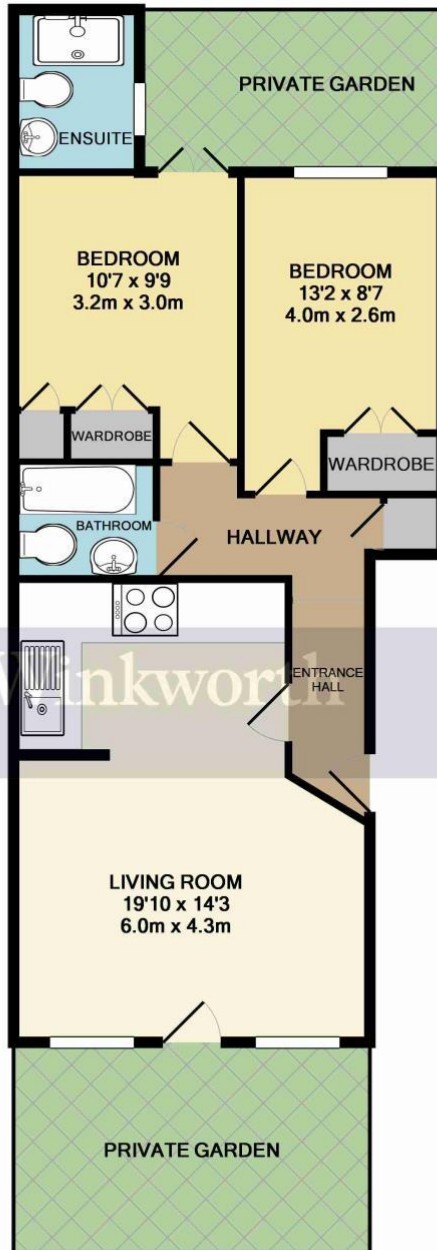
Modern two bedroom ground floor apartment located just a short walk away from the town centre. The property comprises spacious open plan living/dining room and modern kitchen with integrated appliances, two double bedrooms with the master bedroom benefitting from an en suite shower room finished to a high standard as is the three piece family bathroom. Additional features include a private terraced garden, a further small outside area off of the master bedroom, parking for two cars (tandem parking) and double glazing throughout. Available now. Furnished.

AT A GLANCE

- Located in Reading town centre
- Two bedroom apartment
- Two bathrooms
- Council tax band C
- Parking for two cars
- Available now
- Furnished







TOTAL APPROX. FLOOR AREA 654 SQ.FT. (60.8 SQ.M.)

Whilst every attempt has been made to ensure the accuracy of the floor plan contained here, measurements of doors, windows, rooms and any other items are approximate and no responsibility is taken for any error, omission, or mis-statement. This plan is for illustrative purposes only and should be used as such by any prospective purchaser. The services, systems and appliances shown have not been tested and no guarantee as to their operability or efficiency can be given
Made with Metropix ©2015

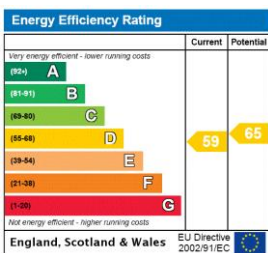
This floorplan is for illustration purposes only and is not to scale. The position and size of doors, windows, appliances and other features are approximate.

Deposit: £1,903.85

Holding Deposit: £380.76

Council Tax Band: C

Where no figures are shown, we have been unable to ascertain the information. All figures that are shown were correct at the time of printing.



Reading | 0118 4022 300 | reading@winkworth.co.uk



for every step...

winkworth.co.uk

Winkworth wishes to inform prospective buyers and tenants that these particulars are a guide and act as information only. All our details are given in good faith and believed to be correct at the time of printing but they don't form part of an offer or contract. No Winkworth employee has authority to make or give any representation or warranty in relation to this property. All fixtures and fittings, whether fitted or not are deemed removable by the vendor unless stated otherwise and room sizes are measured between internal wall surfaces, including furnishings.