



CHARTWELL COURT, 151 BROOK ROAD, LONDON, NW2
£539,950 LEASEHOLD

**A STUNNING LOFT APARTMENT IN THIS CHARACTERFUL
HISTORIC BUILDING WITH AMAZING PANORAMIC VIEWS
OVER LONDON TO THE SOUTH.**

Kensal Rise & Queens Park | 0208 960 4947 | kensalrise@winkworth.co.uk

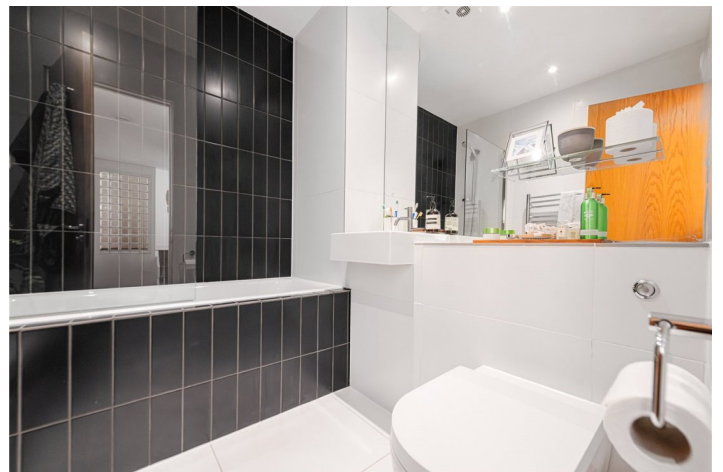
Winkworth

winkworth.co.uk

See things differently



LOCATION: Chartwell Court stands proud at the top of Dollis Hill with panoramic viewings to the south across London. There are some great amenities close by, none more so than Gladstone Park itself which has tennis courts, a Victorian garden, football and rugby pitches and is generally just a great place to walk or sunbath on those rare summer days. Dollis Hill is around a 15 min walk to the Jubilee line but once there Central London and the City are only 20mins and 35mins away respectively. This is a great property in a great building and must be seen!



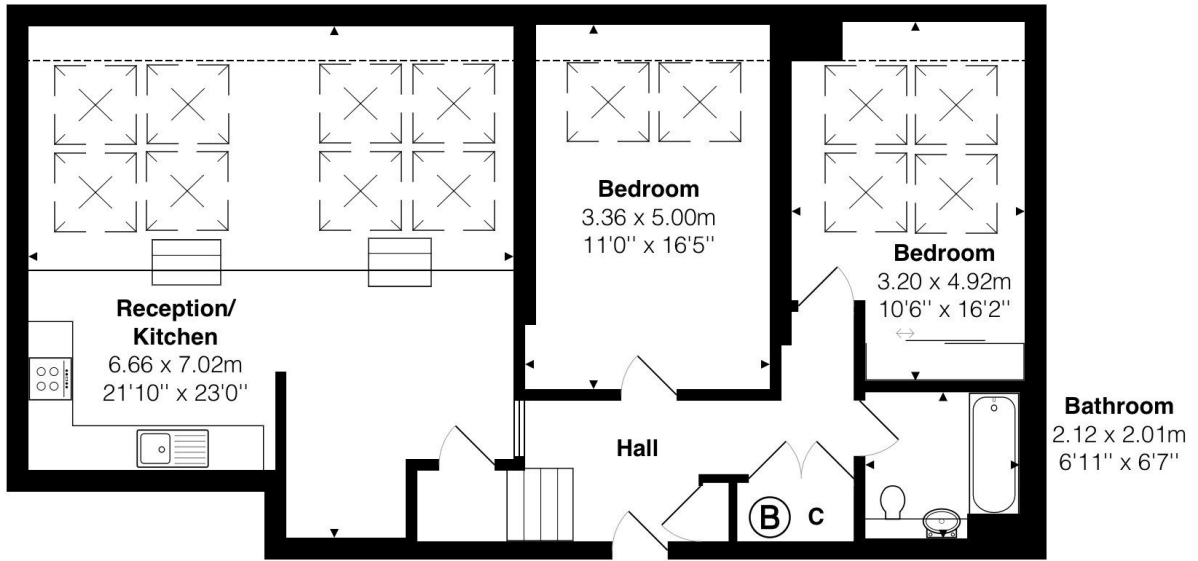
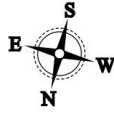
Winkworth



DESCRIPTION:

This newly refurbished huge flat measures 975 sq. ft. and offers two good sized double bedrooms, a contemporary bathroom and a superb open plan living space carved out of the loft spaces of this lovely old building. There are only 10 of these penthouse apartments in the building and due to their scarcity they retain their value very well and attract buyers who are looking for something a bit different and special. Further benefits include off street parking, a secure gated development and a close proximity to Gladstone Park. Make sure you view to understand how good they are.

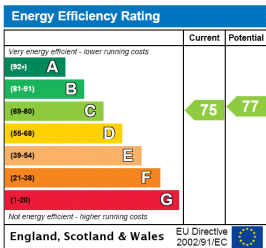
Winkworth



Area: 90.5 m² ... 975 ft²

All measurements are approximate and for display purposes only

This floorplan is for illustration purposes only and is not to scale. The position and size of doors, windows, appliances and other features are approximate.



Kensal Rise & Queens Park | 0208 960 4947 | kensalrise@winkworth.co.uk



winkworth.co.uk

See things differently

winkworth wishes to inform prospective buyers and tenants that these particulars are a guide and act as information only. All our details are given in good faith and believed to be correct at the time of printing but they don't form part of an offer or contract. No winkworth employee has authority to make or give any representation or warranty in relation to this property. All fixtures and fittings, whether fitted or not are deemed removable by the vendor unless stated otherwise and room sizes are measured between internal wall surfaces, including furnishings.