



PARK RISE, SURREY, KT22
£1,600 PER MONTH UNFURNISHED

**A WELL-PRESENTED, TWO-BEDROOM
PENTHOUSE APARTMENT SITUATED CLOSE TO
LEATHERHEAD HIGH STREET AND TRAIN**

Weybridge | 01932 854400 | weybridge@winkworth.co.uk

Tenant Fees Apply: Details of fees for tenant referencing, tenancy agreement admin fees and renewal fees are available on the Winkworth website and the link can be found with the displayed rent for the property. Tenants should ensure they are fully conversant with these upfront fees and other costs that are involved at the outset of the tenancy before making an offer to rent and your local Winkworth office will provide written details upon request.

winkworth.co.uk

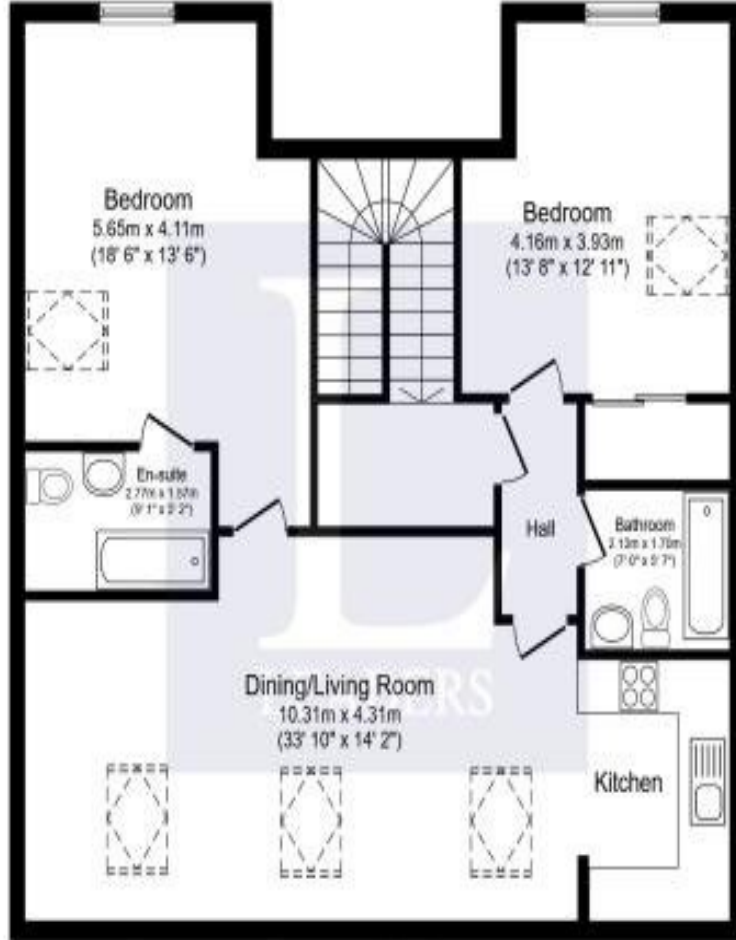
Winkworth

for every step...

Energy Efficiency Rating		Current	Potential
Most energy efficient - lower running costs			
(92+)	A		
(81-91)	B		
(69-80)	C	71	75
(55-68)	D		
(39-54)	E		
(21-38)	F		
(1-20)	G		
Not energy efficient - higher running costs			
England, Scotland & Wales		EU Directive 2002/91/EC	

ACCOMMODATION

2 Bedrooms, 1 Reception Room, 2 Bathrooms, Flat/Apartment, Penthouse, Residents Parking, Town/City, Purpose Built, Unfurnished



Total floor area 98.0 sq. m. (1,055 sq. ft.) approx

This floorplan is for illustration purposes only and is not to scale. The position and size of doors, windows, appliances and other features are approximate.

Deposit: £1,846.15

Holding Deposit:

Council Tax Band:

Where no figures are shown, we have been unable to ascertain the information. All figures that are shown were correct at the time of printing.

Weybridge | 01932 854400 | weybridge@winkworth.co.uk

Winkworth

for every step...

winkworth.co.uk

Winkworth wishes to inform prospective buyers and tenants that these particulars are a guide and act as a property only. All our details are given in good faith and believed to be correct at the time of printing but they don't form part of an offer or contract. No Winkworth employee has authority to make or give any representation or warranty in relation to this property. All fixtures and fittings, whether fitted or not are deemed removable by the vendor unless stated otherwise and room sizes are measured between internal wall surfaces, including furnishings.