



COMMERCIAL STREET, LONDON, E1
£2,400 PER MONTH

NESTLED IN THE VIBRANT HEART OF SPITALFIELDS, THIS BEAUTIFULLY CONVERTED ONE-BEDROOM VICTORIAN

Shoreditch | 020 7749 7650 | shoreditch@winkworth.co.uk

Winkworth

Tenant Fees Apply: Details of fees for tenant referencing, tenancy agreement admin fees and renewal fees are available on the Winkworth website and the link can be found with the displayed rent for the property. Tenants should ensure they are fully conversant with these upfront fees and other costs that are involved at the outset of the tenancy before making an offer to rent and your local Winkworth office will provide written details upon request.

winkworth.co.uk

See things differently



DESCRIPTION:

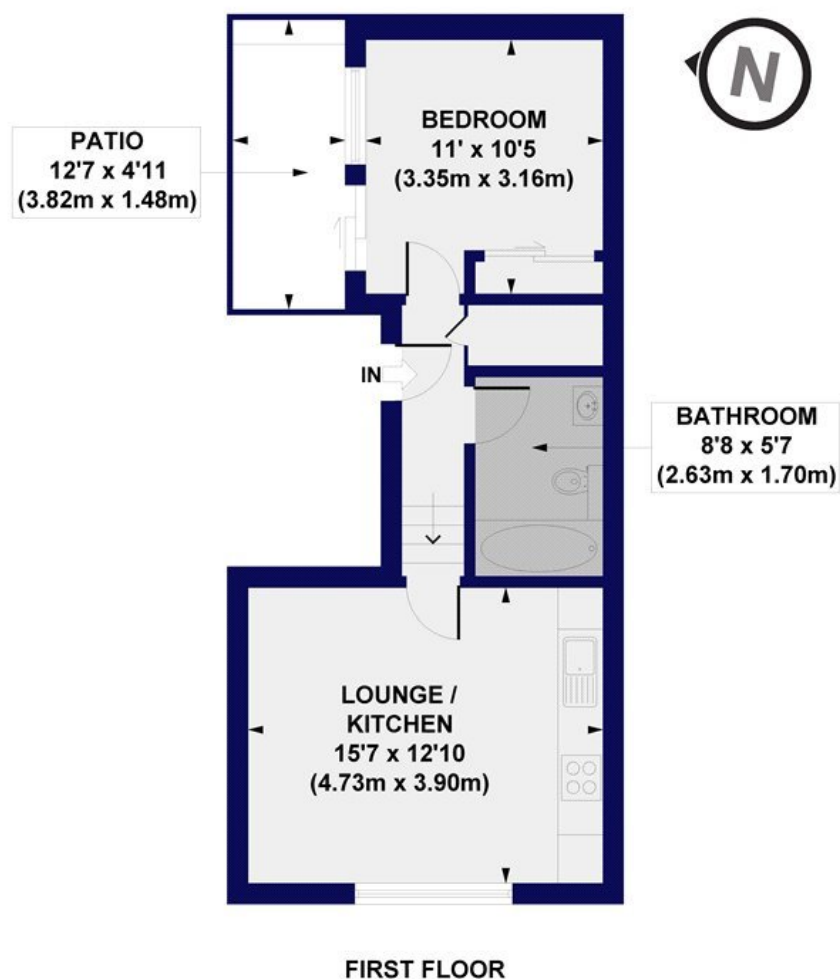
Nestled in the vibrant heart of Spitalfields, this beautifully converted one-bedroom Victorian apartment offers a perfect blend of timeless elegance and modern sophistication. Meticulously designed, this flat is ideal for professionals seeking stylish urban living in one of London's most iconic neighborhoods. The property features a spacious, open-plan living and kitchen area, complete with a high-end fitted kitchen, elegant sash windows, and an abundance of natural light. The luxurious bathroom complements the serene bedroom, situated at the rear for added privacy, which opens onto a charming internal balcony—a private retreat amidst the city's buzz. Holding deposit: 1 weeks rent.

Winkworth



Winkworth

Commercial Street, E1
Approx. Gross Internal Floor Area 424 sq. ft / 39.43 sq. m



FIRST FLOOR

All measurements of walls, doors, windows, fittings and appliances, including their size and location, are shown as standard sizes and do not constitute any warranty or representation by the seller, their agent or CP Creative. Any intending purchaser must satisfy himself by inspection or otherwise as to the correctness of the information contained in these plans. This plan is for illustrative purposes only and should be used as such by any prospective purchasers.

Winkworth

This floorplan is for illustration purposes only and is not to scale. The position and size of doors, windows, appliances and other features are approximate.

Shoreditch | 020 7749 7650 | shoreditch@winkworth.co.uk

Winkworth

winkworth.co.uk

See things differently

Winkworth wishes to inform prospective buyers and tenants that these particulars are a guide and act as information only. All our details are given in good faith and believed to be correct at the time of printing but they don't form part of an offer or contract. No Winkworth employee has authority to make or give any representation or warranty in relation to this property. All fixtures and fittings, whether fitted or not are deemed removable by the vendor unless stated otherwise and room sizes are measured between internal wall surfaces, including furnishings.