



**DRAYTON PARK, HIGHBURY, N5**  
**£625 PER WEEK FURNISHED**

**WINKWORTH ARE DELIGHTED TO PRESENT THIS FOURTH FLOOR THREE BED APARTMENT OFFERING LUXURY OPEN-PLAN LIVING SPACE DESIGNED TO MAXIMISE ON INTERNAL LIGHT AND LATERAL SPACE**

Islington | 0207 354 2480 | [islington@winkworth.co.uk](mailto:islington@winkworth.co.uk)

**Winkworth**

Tenant Fees Apply: Details of fees for tenant referencing, tenancy agreement admin fees and renewal fees are available on the Winkworth website and the link can be found with the displayed rent for the property. Tenants should ensure they are fully conversant with these upfront fees and other costs that are involved at the outset of the tenancy before making an offer to rent and your local Winkworth office will provide written details upon request.

[winkworth.co.uk](http://winkworth.co.uk)

See things differently



## DESCRIPTION:

Offering luxury open-plan living superbly designed to maximise on internal light and lateral space, Winkworth are delighted to present this fourth floor three bed apartment complete with secure video-intercom entry and private balcony. Set within the popular Drayton Park Apartments, the property measures approximately 1056sqft and comprises a wide entrance hall with integrated storage, generous reception/kitchen enjoying balcony access, three good-sized double bedrooms, two with ensuite bathrooms and a further high-spec family bathroom. The property is set close to both London Underground and Overground networks and within easy reach of local bus routes, the development is additionally just a short walk from a host of Highbury amenities and Highbury Fields.

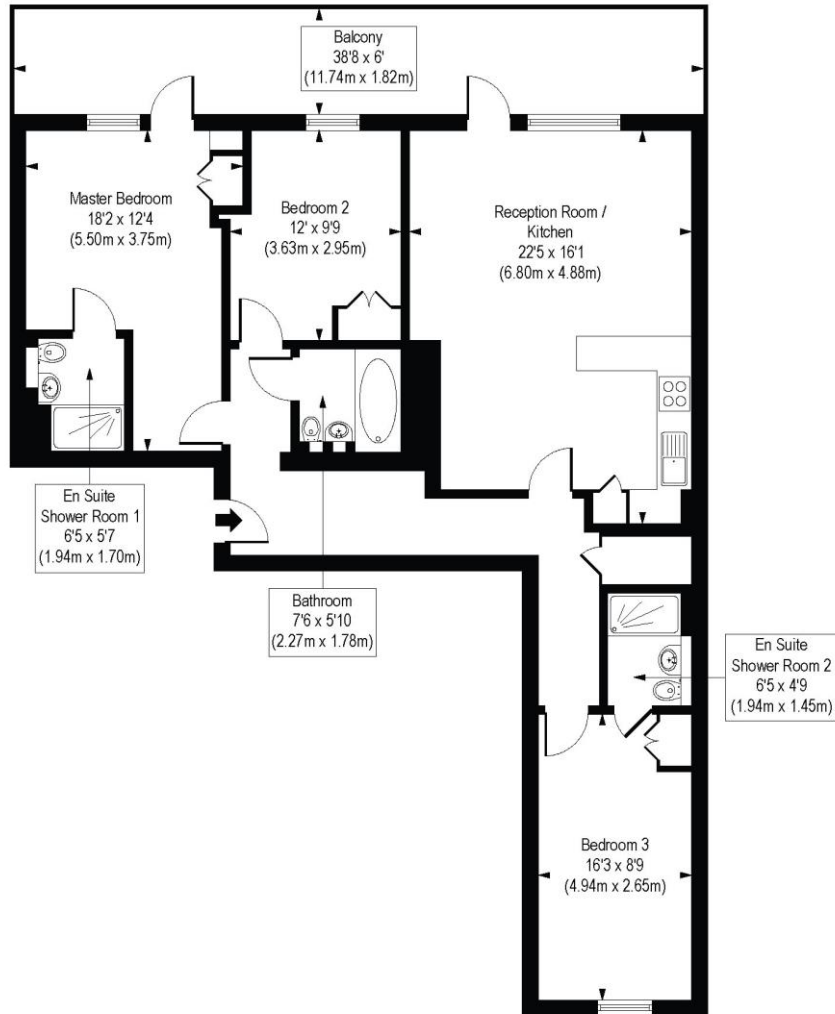
**Winkworth**



**Winkworth**

# Drayton Park, N5

Approx. Gross Internal Floor Area 1056 sq. ft / 98.10 sq. m



Fourth Floor

COMPLIANT WITH RICS CODE OF MEASURING PRACTICE. Floorplan is for illustrative purposes only and is not to scale. Every attempt has been made to ensure the accuracy of the floorplan shown, however all measurements, fixtures, fittings and data shown are an approximate interpretation for illustrative purposes only. Liability for errors, omissions or mis-statement through negligence or otherwise is hereby excluded.

This floorplan is for illustration purposes only and is not to scale. The position and size of doors, windows, appliances and other features are approximate.

Islington | 0207 354 2480 | [islington@winkworth.co.uk](mailto:islington@winkworth.co.uk)

**Winkworth**

[winkworth.co.uk](http://winkworth.co.uk)

See things differently

Winkworth wishes to inform prospective buyers and tenants that these particulars are a guide and act as information only. All our details are given in good faith and believed to be correct at the time of printing but they don't form part of an offer or contract. No Winkworth employee has authority to make or give any representation or warranty in relation to this property. All fixtures and fittings, whether fitted or not are deemed removable by the vendor unless stated otherwise and room sizes are measured between internal wall surfaces, including furnishings.