



WARWICK SQUARE, SW1V

£725,000

SHARE OF FREEHOLD

At a glance...

- Two Bedrooms
- Great Views
- Lovely Condition
- Bright Throughout
- 3rd Floor With Lift
- Council Tax Band: F

Winkworth

for every step...



EPC exempt

WARWICK SQUARE, SW1V

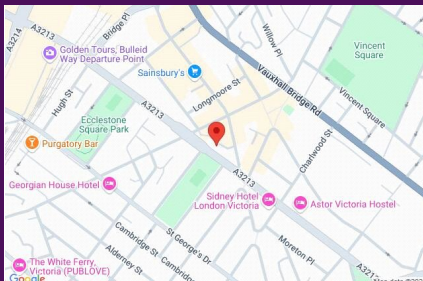
£725,000

SHARE OF FREEHOLD

A bright two-bedroom flat in Pimlico's premier address. The flat overlooks Warwick Square gardens to the front and fantastic London rooftop views into the city to the rear.

Positioned on the 3rd floor, with lift access from the 1st floor, the accommodation comprises two good double bedrooms both with built-in storage, a smart family bathroom with bath, a lovely, cosy reception room with the aforementioned city views and modern kitchen adjoining the reception room but tucked out of the way.

With a share of freehold and presented in excellent condition throughout the flat would make a secure London base, comfortable home and an ideal 1st time buy in the heart of SW1.

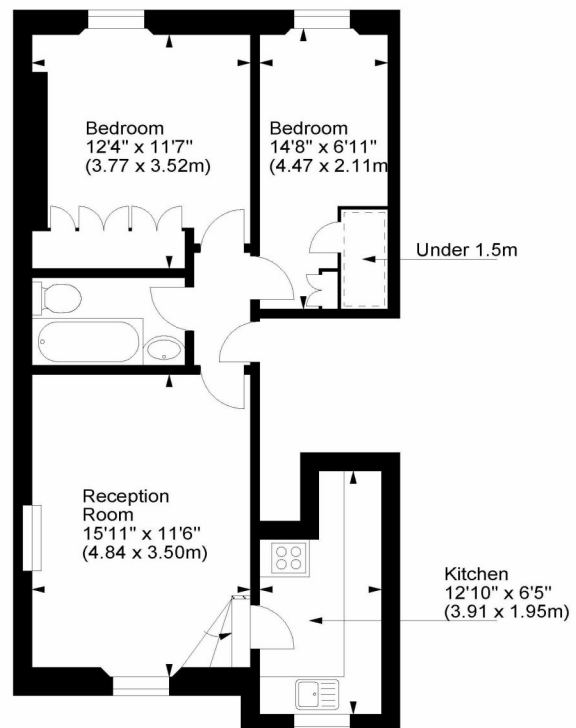


winkworth wishes to inform prospective buyers and tenants that these particulars are a guide and act as information only. All our details are given in good faith and believed to be correct at the time of printing but they don't form part of an offer or contract. No Winkworth employee has authority to make or give any representation or warranty in relation to this property. All fixtures and fittings, whether fitted or not are deemed removable by the vendor unless stated otherwise and room sizes are measured between internal wall surfaces - including fire-chimneys.

Warwick Square, SW1



Approx. Gross Internal Area
566 Sq Ft - 52.62 Sq M



Third Floor

For illustration purposes only. Not to scale.
All measurements are taken and shown at floor level.
www.r3photography.co.uk © Photography / Floor Plans / Lease Plans / EPCs



Pimlico & Westminster

020 7828 1786

pimlico@winkworth.co.uk

winkworth.co.uk/pimlico-westminster

Winkworth

for every step...