



MAIDA VALE, W9 £675,000 LEASEHOLD

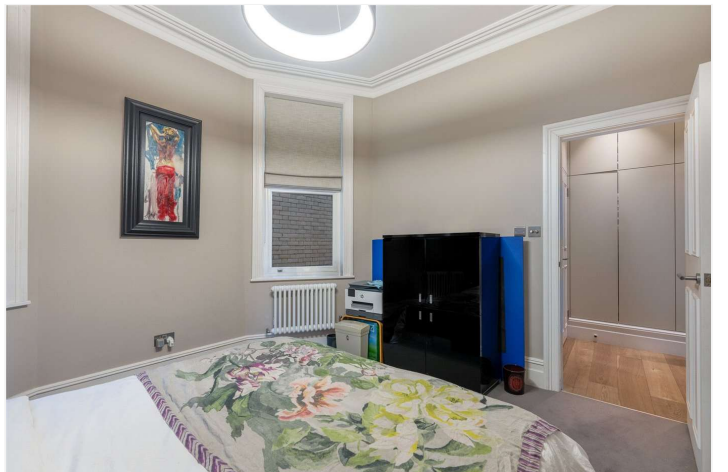
We are delighted to offer this beautiful well-proportioned one double bedroom, first-floor apartment forming part of an attractive converted house located in the heart of this sought-after area. The apartment is ready for immediate occupation, in excellent condition and retains some wonderful attractive features including high ceilings, and a large open-plan kitchen/reception room which benefits from bay-fronted windows, and French doors which lead out onto a private balcony. The apartment is within a short distance of the boutique shops & cafes on Clifton Road (0.3 miles), the famous Regents Canal (0.4 miles) and the Underground at Maida Vale (Bakerloo line, 0.3 miles) and Warwick Avenue (Bakerloo line, 0.5 miles).

Primary Double Bedroom | Family Shower Room | Open Plan Kitchen/Reception Room | Balcony | Leasehold

Winkworth

for every step...

[winkworth.co.uk/maida-vale](https://www.winkworth.co.uk/maida-vale)



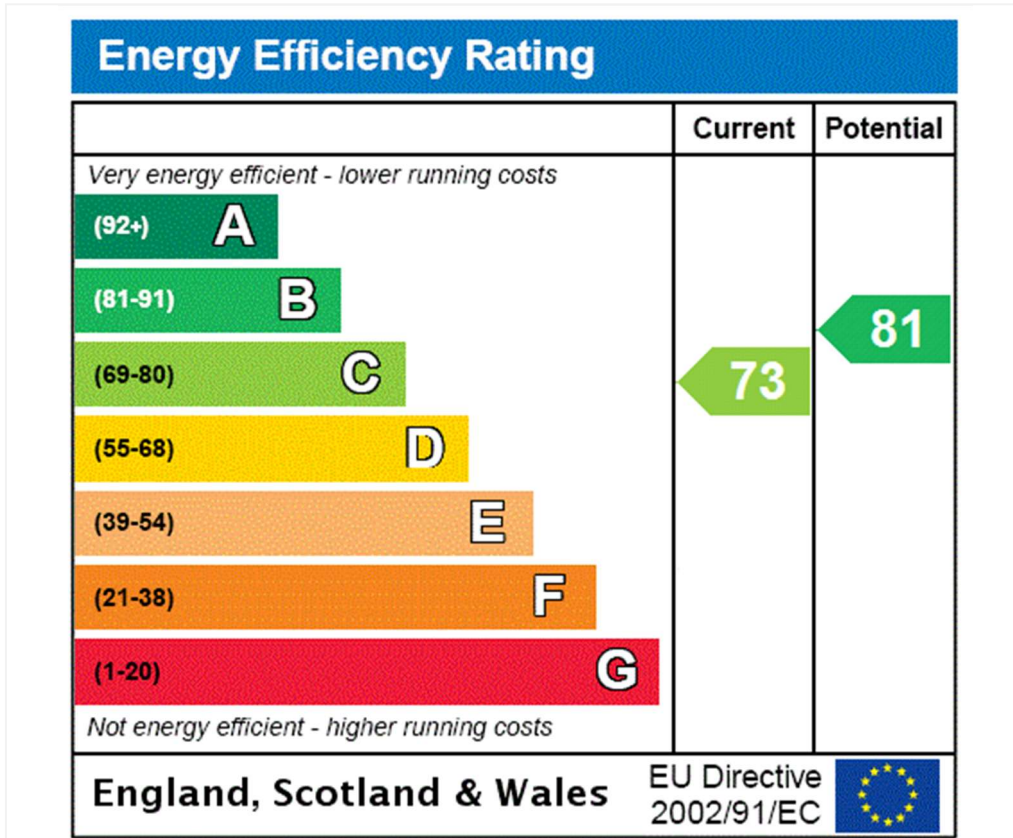
Maida Vale, London W9 1 RS

First Floor
GROSS INTERNAL FLOOR AREA
APPROX. 55.28 SQ M / 595 SQ FT



APPROXIMATE GROSS INTERNAL FLOOR AREA 55.28 SQ M / 595 SQ FT
THIS FLOOR PLAN IS FOR ILLUSTRATIVE PURPOSES ONLY AND
SHOULD BE USED FOR THIS PURPOSE BY PROSPECTIVE APPLICANTS AS ITS NOT TO SCALE.

(c) AMBERSHORE PIX LIMITED / PHOTO - VIDEO - FLOOR PLANS / 0800 999 1577 / WWW.AMERSHOREPIX.CO.UK



Tenure: Leasehold

Term: Expires - 25/12/2122

Service Charge: £2,313 per annum

Ground Rent: £125 Annually (subject to increase)

Council Tax Band: E

Where no figures are shown, we have been unable to ascertain the information. All figures that are shown were correct at the time of printing.

Where no figures are shown, we have been unable to ascertain the information. All figures that are shown were correct at the time of printing. These particulars are not an offer or contract, nor part of one. You should not rely on statements by Winkworth in the particulars or by word of mouth or in writing "information" as being factually accurate about the property, its condition or its value. Winkworth does not have any authority to make any representations about the property, and accordingly any information given is entirely without responsibility on the part of the agents, seller(s) or lessor(s). These particulars are prepared on the basis of the information supplied by our client and are a rough guide for information only. The photographs show only certain parts of the property. We are not able to check all of the information and therefore are unable to guarantee accuracy. All interested parties are therefore advised to undertake all necessary inspections and checks that they deem appropriate. Where displayed, the square footage is taken from the floor plans, which are created by an independent supplier. These measurements are approximate and included for illustrative purposes only. The measurements may vary. Winkworth does not make any representation as to the accuracy of these measurements and you should seek to verify them for yourself. Winkworth accept no liability for any loss you may suffer if you rely on these measurements. All fixtures and fittings, whether fitted or not are deemed removable by the vendor unless stated. Any reference to alterations to, or use of, any part of the property does not mean that any necessary planning, building regulations or other consent has been obtained. Amenities and appliances have not been tested



Maida Vale | 211-213 Sutherland Avenue, London, W9 1RU | 020 7289 1692 | maidavale@winkworth.co.uk

for every step...

winkworth.co.uk/maida-vale

Winkworth wishes to inform prospective buyers and tenants that these particulars are a guide and act as information only. All our details are given in good faith and believed to be correct at the time of printing but they don't form part of an offer or contract. No Winkworth employee has authority to make or give any representation or warranty in relation to this property. All fixtures and fittings, whether fitted or not are deemed removable by the vendor unless stated otherwise and room sizes are measured between internal wall surfaces, including furnishings.