



## WELBECK MANSIONS, LONDON, NW6 £575,000 LEASEHOLD

Beautifully presented 673 sq ft one bedroom apartment set on the top floor (with lift) of one of West Hampstead's premier mansion blocks. Tucked way off West End Lane, Welbeck Mansions is well located for the shops, restaurants and bars of West End Lane.

The property comprises of a large living area with dining area, fully equipped separate kitchen, double bedroom with built in storage, three-piece shower room and generously sized separate storage room.

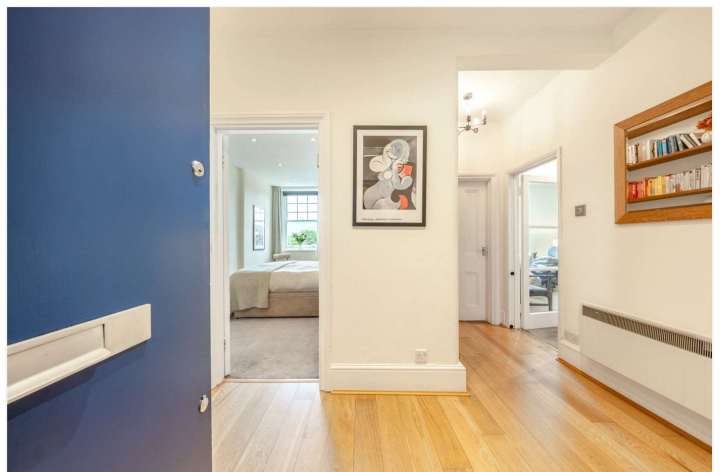
The property is very well located within 0.1m of West Hampstead stations (with Thameslink, tube and overground services), as well as numerous regular bus routes providing excellent cross-London links. The property area is also well served by fashionable shops, bars, cafes and restaurants in this wonderful central location. There is also the popular farmers market which is held minutes away every Saturday.

Double Bedroom | Shower Room | Reception | Kitchen

**Winkworth**

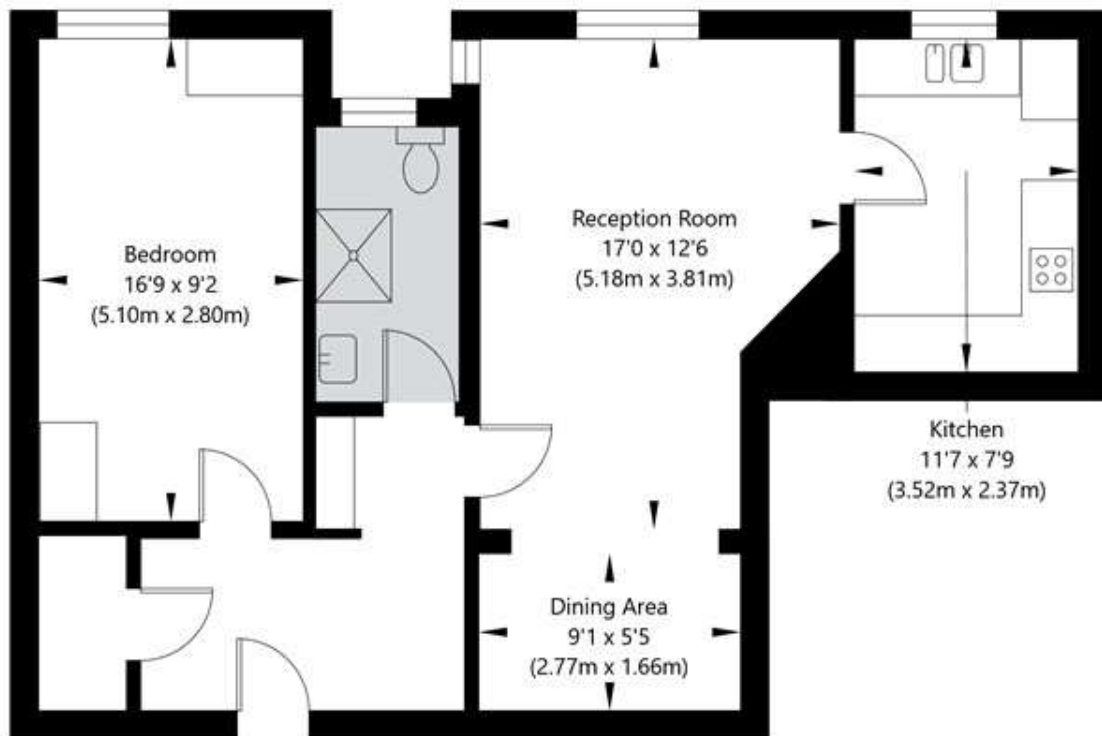
for every step...

[winkworth.co.uk/west-hampstead](http://winkworth.co.uk/west-hampstead)



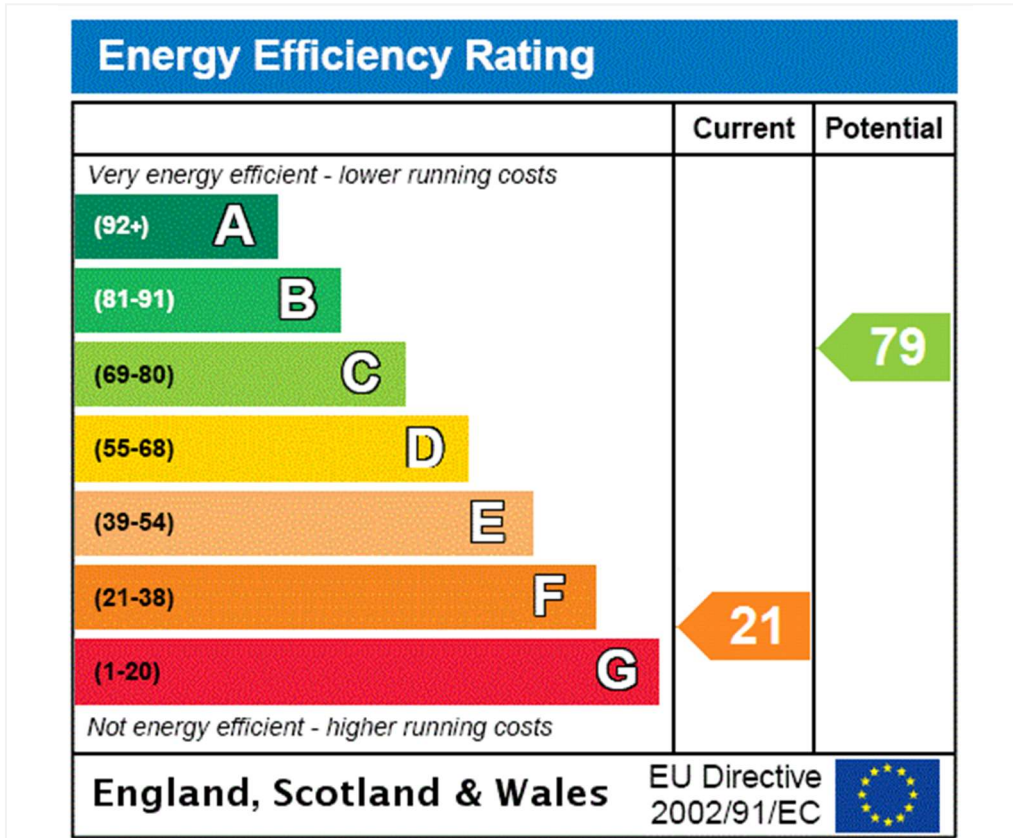
# Welbeck Mansions, Inglewood Road, London, NW6 1QX

Fourth Floor  
GROSS INTERNAL FLOOR AREA  
APPROX. 62.56 SQ M / 673 SQ FT



APPROXIMATE GROSS INTERNAL FLOOR AREA 62.56 SQ M / 673 SQ FT  
THIS FLOOR PLAN IS FOR ILLUSTRATIVE PURPOSES ONLY AND  
SHOULD BE USED FOR THIS PURPOSE BY PROSPECTIVE APPLICANTS AS ITS NOT TO SCALE.

(c) AMBERSHORE PIX LIMITED / PHOTO - VIDEO - FLOOR PLANS / 0800 999 1577 / WWW.AMERSHOREPIX.CO.UK



**Tenure:** Leasehold

**Term:** Expires - 01/05/2989

**Service Charge:** £3,685.68 per annum

**Council Tax Band:** D

Where no figures are shown, we have been unable to ascertain the information. All figures that are shown were correct at the time of printing.

Where no figures are shown, we have been unable to ascertain the information. All figures that are shown were correct at the time of printing. These particulars are not an offer or contract, nor part of one. You should not rely on statements by Winkworth in the particulars or by word of mouth or in writing "information" as being factually accurate about the property, its condition or its value. Winkworth does not have any authority to make any representations about the property, and accordingly any information given is entirely without responsibility on the part of the agents, seller(s) or lessor(s). These particulars are prepared on the basis of the information supplied by our client and are a rough guide for information only. The photographs show only certain parts of the property. We are not able to check all of the information and therefore are unable to guarantee accuracy. All interested parties are therefore advised to undertake all necessary inspections and checks that they deem appropriate. Where displayed, the square footage is taken from the floor plans, which are created by an independent supplier. These measurements are approximate and included for illustrative purposes only. The measurements may vary. Winkworth does not make any representation as to the accuracy of these measurements and you should seek to verify them for yourself. Winkworth accept no liability for any loss you may suffer if you rely on these measurements. All fixtures and fittings, whether fitted or not are deemed removable by the vendor unless stated. Any reference to alterations to, or use of, any part of the property does not mean that any necessary planning, building regulations or other consent has been obtained. Amenities and appliances have not been tested



West Hampstead | 142 West End Lane, London, NW6 1SD | 020 7483 7602 |

westhampstead@winkworth.co.uk

for every step...

[winkworth.co.uk/west-hampstead](http://winkworth.co.uk/west-hampstead)

Winkworth wishes to inform prospective buyers and tenants that these particulars are a guide and act as information only. All our details are given in good faith and believed to be correct at the time of printing but they don't form part of an offer or contract. No Winkworth employee has authority to make or give any representation or warranty in relation to this property. All fixtures and fittings, whether fitted or not are deemed removable by the vendor unless stated otherwise and room sizes are measured between internal wall surfaces, including furnishings.