



HERVEY ROAD, BLACKHEATH, LONDON, SE3 8BX
£399,995 LEASEHOLD

**A VERY LARGE TWO DOUBLE BEDROOM SPLIT LEVEL
MAISONETTE WITH A PRIVATE TERRACE WITHIN
EASY REACH OF BLACKHEATH VILLAGE AND
GREENWICH PARK.**

Blackheath | 0208 8520999 | blackheath@winkworth.co.uk

Winkworth

winkworth.co.uk

See things differently



DESCRIPTION:

The property is in excellent decorative order with double glazed windows, wood flooring and gas fired central heating. With a private entrance the accommodation comprises; a large 17'7 x 10'1 dual aspect living room with a private terrace, a large kitchen diner with very attractive modern kitchen and very good storage. Upstairs is a 15'11 master bedroom with extensive built in wardrobes, second double bedroom and a beautiful bathroom and separate WC.

This is a lovely home and offers spacious, bright and airy accommodation and is sure to be very popular. Virtual tours can be seen at winkworth.co.uk

The property is located close to the Heath and 1 mile from Blackheath Village with its array of restaurants, bars, boutique shops and farmer's market. The daily conveniences of Blackheath Standard are only 570 metres away including an M&S food hall. The fabulous Royal Greenwich Park is just 0.9 miles with Greenwich town centre beyond. Greenwich maintains a quaint rural village feel and is steeped in history with the old Royal Naval hospital, the Royal Observatory, the National Maritime Museum, and the spectacularly restored Cutty Sark. Greenwich's covered market is one of London's best and attracts people from all over the capital.

There are superb transport links with Blackheath Station giving access to London Bridge, Charing Cross, and Victoria amongst others. The O2 arena is close by with the DLR, bus, riverboat, foot tunnel and cable car all within easy reach; and Canary Wharf, the City and central London are just minutes away via the Jubilee Line at North Greenwich - just one of the reasons why it's increasingly popular with professionals and commuters.

AT A GLANCE

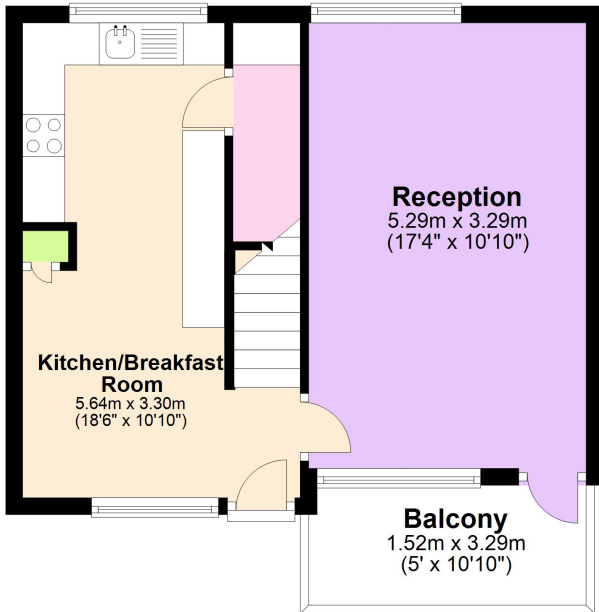
- split level maisonette
- two double bedrooms
- modern kitchen
- beautiful bathroom
- very spacious
- private terrace
- communal gardens
- close to heath





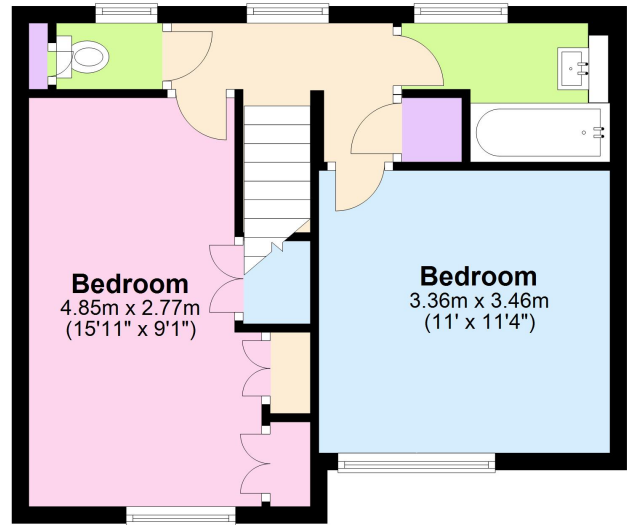
First Floor

Approx. 36.5 sq. metres (393.4 sq. feet)



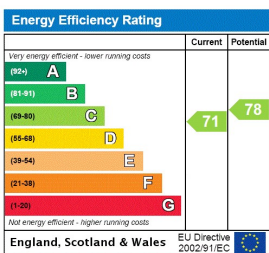
Second Floor

Approx. 37.4 sq. metres (402.1 sq. feet)



Total area: approx. 73.9 sq. metres (795.5 sq. feet)

This floorplan is for illustration purposes only and is not to scale. The position and size of doors, windows, appliances and other features are approximate. Any lease and service charge details have been provided by the vendor. Any interest party should have these checked by a solicitor as part of the purchase process.



Blackheath | 0208 8520999 | blackheath@winkworth.co.uk



winkworth.co.uk

See things differently

Winkworth wishes to inform prospective buyers and tenants that these particulars are a guide and act as information only. All our details are given in good faith and believed to be correct at the time of printing but they don't form part of an offer or contract. No Winkworth employee has authority to make or give any representation or warranty in relation to this property. All fixtures and fittings, whether fitted or not are deemed removable by the vendor unless stated otherwise and room sizes are measured between internal wall surfaces, including furnishings.