



Fairway Point, 93 Golf Links Road
Ferndown BH22 8BU
Guide Price £365,000





Guide Price £365,000
FREEHOLD

Stunning two double bedroom two bathroom penthouse apartment (second floor with lift) located in a luxury development of just eight apartments overlooking Ferndown Championship Golf Course.

This lovely apartment has a share of the freehold and has been built to a very high specification throughout, with a modern and luxury finish.

Further benefitting from an external storage unit, landscaped communal gardens, allocated parking and **NO ONWARD CHAIN.**

Two Double Bedrooms
Stunning Penthouse Apartment
Master En-suite
Luxury Specification Throughout
Allocated Off Road Parking
External Storage Unit
Lift Access
Sought After Location With Views Over Golf Course
Share Of Freehold
Communal Landscaped Garden
No Onward Chain

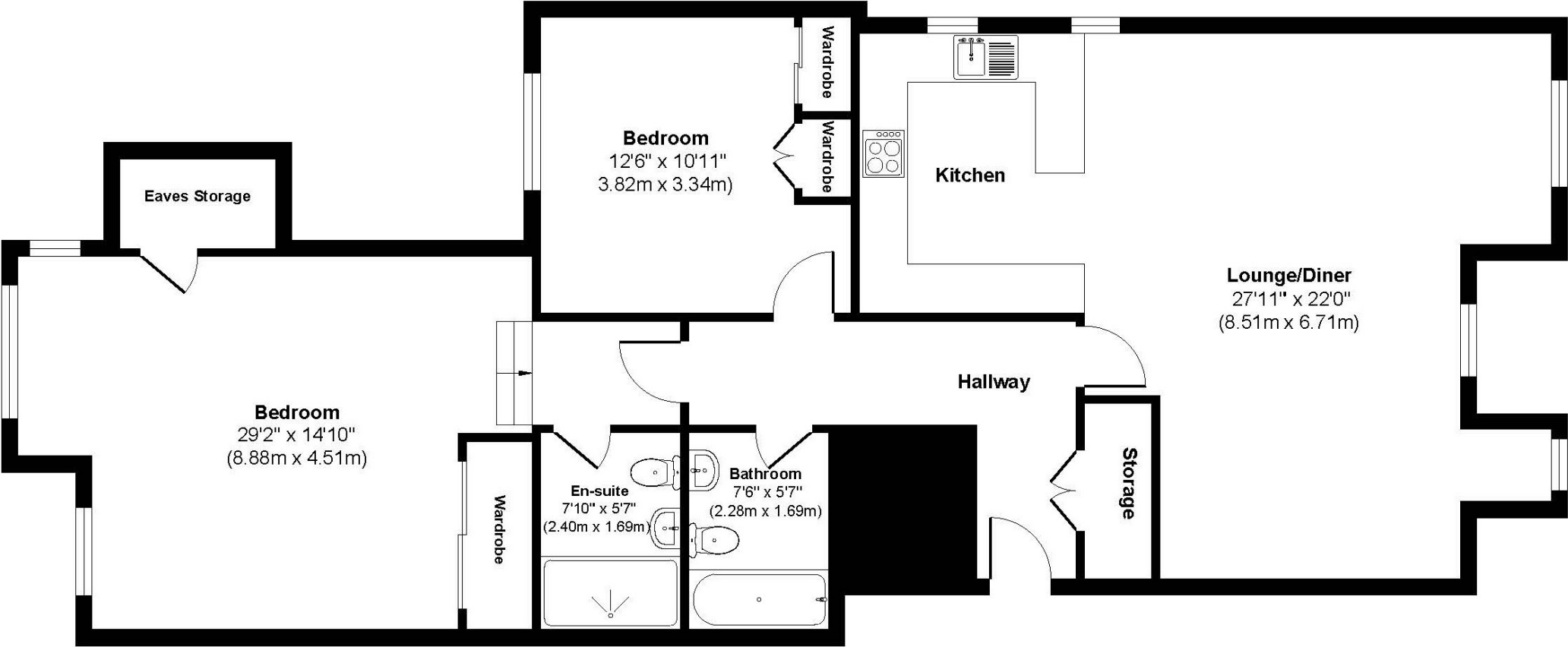
EPC B | Council Tax Band E

01202 434365

ferndown@winkworth.co.uk



Fairway Point



Approx. Gross Internal Floor Area 1129 sq. ft / 105 sq. m
Illustration for identification purposes only, measurements approximate and not to scale.



LOCATION

Fairway Point is positioned on Golf Links Road, a very desirable residential location just a short walk from Ferndown town centre, which has a range of shops, cafes and amenities including an M&S Food Hall. There are bus routes within a short walk giving you easy access to Bournemouth, Poole and Wimborne, all of which have an excellent range of shops, bars, restaurants and leisure facilities. Award winning beaches are just twenty minutes away and the A31 provides quick access to the New Forest, Southampton and beyond for the commuter by car.

Winkworth Ferndown

406 Ringwood Road, Ferndown, Dorset, BH22 9AU

01202 434365 | ferndown@winkworth.co.uk

[winkworth.co.uk/ferndown](https://www.winkworth.co.uk/ferndown)

Winkworth