



**Fairway Point, 93 Golf Links Road**  
Ferndown BH22 8BU  
**Guide Price £350,000**

**Winkworth**



Guide Price £350,000  
FREEHOLD

**Stunning two double bedroom two bathroom penthouse apartment (second floor with lift) located in a luxury development of just eight apartments overlooking Ferndown Championship Golf Course.**

**This lovely apartment has a share of the freehold and has been built to a very high specification throughout, with a modern and luxury finish.**

**Further benefitting from an external storage unit, landscaped communal gardens, allocated parking and NO ONWARD CHAIN.**

Two Double Bedrooms  
Stunning Penthouse Apartment  
Master En-suite  
Luxury Specification Throughout  
Allocated Off Road Parking  
External Storage Unit  
Lift Access  
Sought After Location With Views Over Golf Course  
Share Of Freehold  
Communal Landscaped Garden  
No Onward Chain

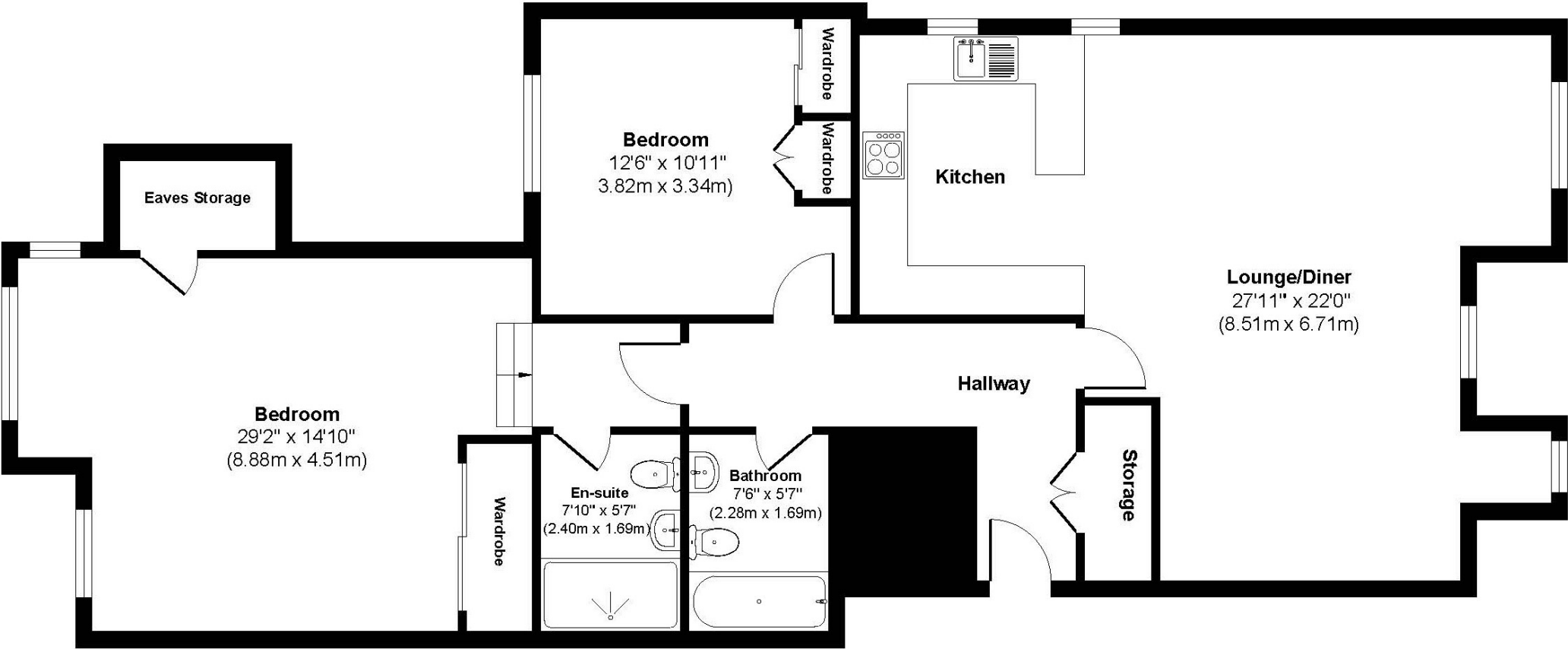
EPC B | Council Tax Band E

01202 434365

ferndown@winkworth.co.uk



**Fairway Point**



**Approx. Gross Internal Floor Area 1129 sq. ft / 105 sq. m**  
Illustration for identification purposes only, measurements approximate and not to scale.



## LOCATION

Fairway Point is positioned on Golf Links Road, a very desirable residential location just a short walk from Ferndown town centre, which has a range of shops, cafes and amenities including an M&S Food Hall. There are bus routes within a short walk giving you easy access to Bournemouth, Poole and Wimborne, all of which have an excellent range of shops, bars, restaurants and leisure facilities. Award winning beaches are just twenty minutes away and the A31 provides quick access to the New Forest, Southampton and beyond for the commuter by car.

## Winkworth Ferndown

406 Ringwood Road, Ferndown, Dorset, BH22 9AU

01202 434365 | [ferndown@winkworth.co.uk](mailto:ferndown@winkworth.co.uk)

[winkworth.co.uk/ferndown](http://winkworth.co.uk/ferndown)

**Winkworth**