



LINKS VIEW, LONDON, UNITED KINGDOM, N3
£699,950 FREEHOLD

A THREE BEDROOM TERRACED HOUSE, WITH
AMPLE LIVING SPACE, IN EXCELLENT
CONDITION.

Finchley | 020 8349 3388 | finchley@winkworth.co.uk

Winkworth

for every step...

winkworth.co.uk



DESCRIPTION:

We are pleased to offer this well-presented, three bedroom, terraced townhouse, situated in a private cul-de-sac off Dollis Road. Ideally placed for local amenities, including Finchley Central underground station, recreational parkland and Outstanding Ofsted Rated schools, this lovely family home offers ample space over four floors, and comprises spacious reception room with sliding doors to rear garden on the lower ground floor, a modern fitted open plan kitchen/living/dining room offering plenty of natural light, separate study room to accommodate anyone who is working from home, and a wc to the ground floor with a good sized bedroom with en suite to the first floor and two bedrooms and bathroom on the top floor. Further benefits include off street parking and garage. An internal viewing is highly recommended!

AT A GLANCE

- Spacious terraced family home
- Private road
- Large reception room
- Kitchen/dining area
- Study room
- Three bedrooms
- Two bathrooms
- Two car parking spaces
- Garage

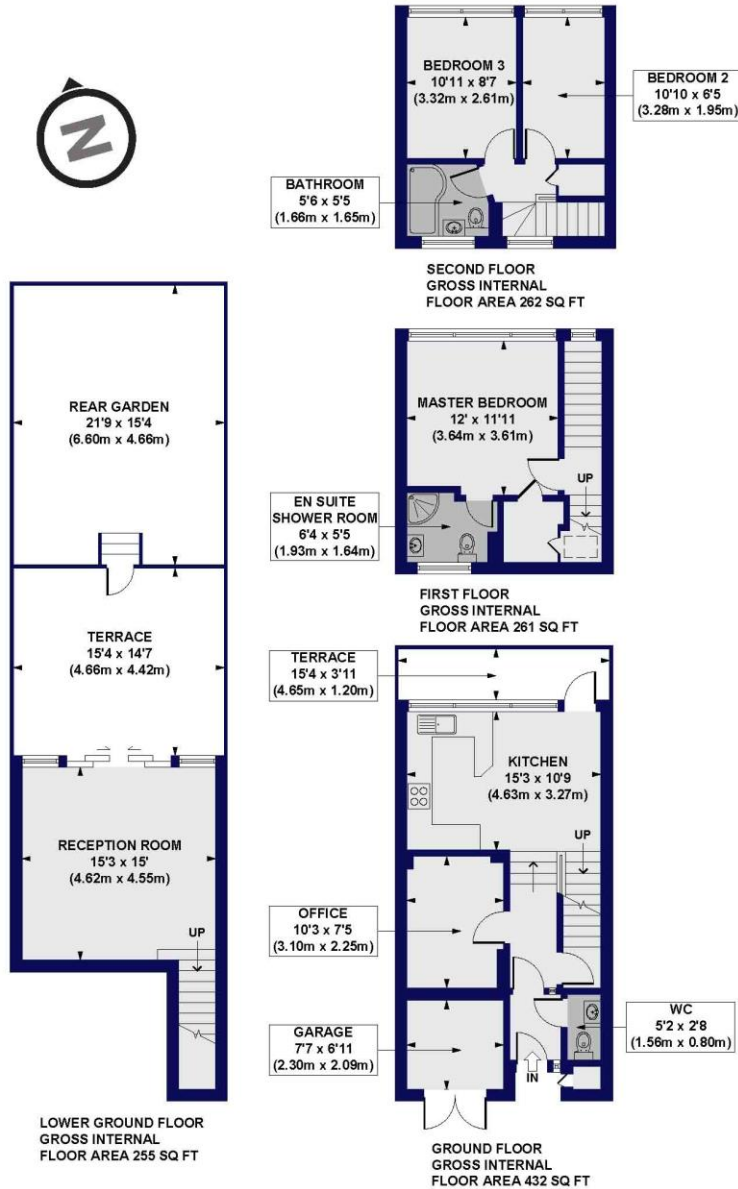




Links View, N3

Approx. Gross Internal Floor Area 1211 sq. ft / 112.47 sq. m (Including Garage)

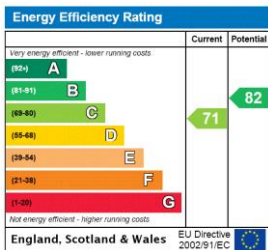
Approx. Gross Internal Floor Area 1149 sq. ft / 106.70 sq. m (Excluding Garage)



All measurements of walls, doors, windows, fittings and appliances, including their size and location, are shown as standard sizes and do not constitute any warranty or representation by the seller, their agent or CP Creative. Any intending purchaser must satisfy himself by inspection or otherwise as to the correctness of the information contained in these plans. This plan is for illustrative purposes only and should be used as such by any prospective purchasers.

Winkworth

This floorplan is for illustration purposes only and is not to scale. The position and size of doors, windows, appliances and other features are approximate.



Finchley | 020 8349 3388 | finchley@winkworth.co.uk



for every step...

winkworth.co.uk

Winkworth wishes to inform prospective buyers and tenants that these particulars are a guide and act as information only. All our details are given in good faith and believed to be correct at the time of printing but they don't form part of an offer or contract. No Winkworth employee has authority to make or give any representation or warranty in relation to this property. All fixtures and fittings, whether fitted or not are deemed removable by the vendor unless stated otherwise and room sizes are measured between internal wall surfaces, including furnishings.