



**THE WENLOCK, WHARF ROAD, ANGEL, N1
£575 PER WEEK FURNISHED**

**THIS TWO BEDROOM APARTMENT IS SET WITHIN THE
POPULAR AND TRANQUIL WHARF ROAD DEVELOPMENT
WITH A STUNNING CANAL-SIDE VIEW**

Islington | 0207 354 2480 | islington@winkworth.co.uk

Winkworth

Tenant Fees Apply: Details of fees for tenant referencing, tenancy agreement admin fees and renewal fees are available on the Winkworth website and the link can be found with the displayed rent for the property. Tenants should ensure they are fully conversant with these upfront fees and other costs that are involved at the outset of the tenancy before making an offer to rent and your local Winkworth office will provide written details upon request.

winkworth.co.uk

See things differently



DESCRIPTION:

This two bedroom apartment is set within the popular and tranquil Wharf Road development with a stunning canal-side view. The fourth floor accommodation is made up of a spacious entrance hallway, a large and bright open-plan kitchen/living room, a large en-suite master bedroom, a second double bedroom and a family bathroom. The property also boasts wooden floors throughout and a large balcony overlooking the canal. The development is located close to Angel Tube Station and the amenities of Upper Street. Furnished.

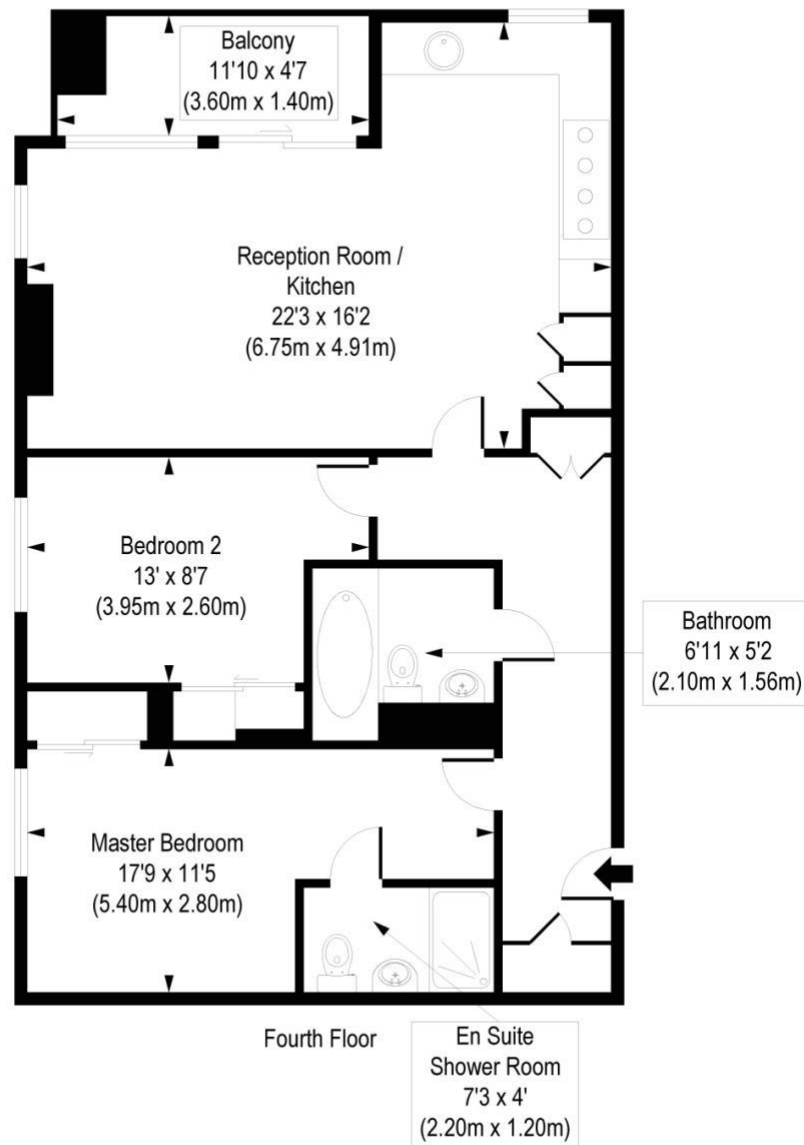
Winkworth



Winkworth

Wharf Road, N1

Approx. Gross Internal Area 749 sq. ft / 69.58 sq. m



COMPLIANT WITH RICS CODE OF MEASURING PRACTICE Floorplan is for illustrative purposes only and is not to scale. Every attempt has been made to ensure the accuracy of the floorplan shows, however all measurements, fixtures, fittings and data shown are an approximate interpretation for illustrative purposes only. Liability for errors, omissions or mis-statement through negligence or otherwise is hereby excluded.

This floorplan is for illustration purposes only and is not to scale. The position and size of doors, windows, appliances and other features are approximate.

Islington | 0207 354 2480 | islington@winkworth.co.uk

Winkworth

winkworth.co.uk

See things differently

Winkworth wishes to inform prospective buyers and tenants that these particulars are a guide and act as information only. All our details are given in good faith and believed to be correct at the time of printing but they don't form part of an offer or contract. No Winkworth employee has authority to make or give any representation or warranty in relation to this property. All fixtures and fittings, whether fitted or not are deemed removable by the vendor unless stated otherwise and room sizes are measured between internal wall surfaces, including furnishings.