



Cornwall Gardens

London, SW7

Two bedroom flat (with lift) on Cornwall Gardens.

This well-proportioned two bedroom, one bathroom flat is located on the third floor with direct views of the gardens of Cornwall Gardens.

The property benefits of a lift with quick accessibility to the flat. The apartment internally has been incredibly well maintained and would suit anyone looking to move straight in.

This is being sold chain free with a share of freehold.

Cornwall Gardens is perfectly located within the heart of South Kensington. The closest tube station is Gloucester Road (Piccadilly and District lines) which is approximately 0.3 miles away. Within the local area you will find many famous landmarks including Hyde Park (approx.0.8 miles), Kensington Palace (approx. 0.9 miles), The Royal Albert Hall (approx. 0.6 miles), The Natural History Museum (approx. 0.5 miles)

Asking Price: £1,000,000 Subject to Contract

Tenure: Share of Freehold (being sold with 143yrs remaining)

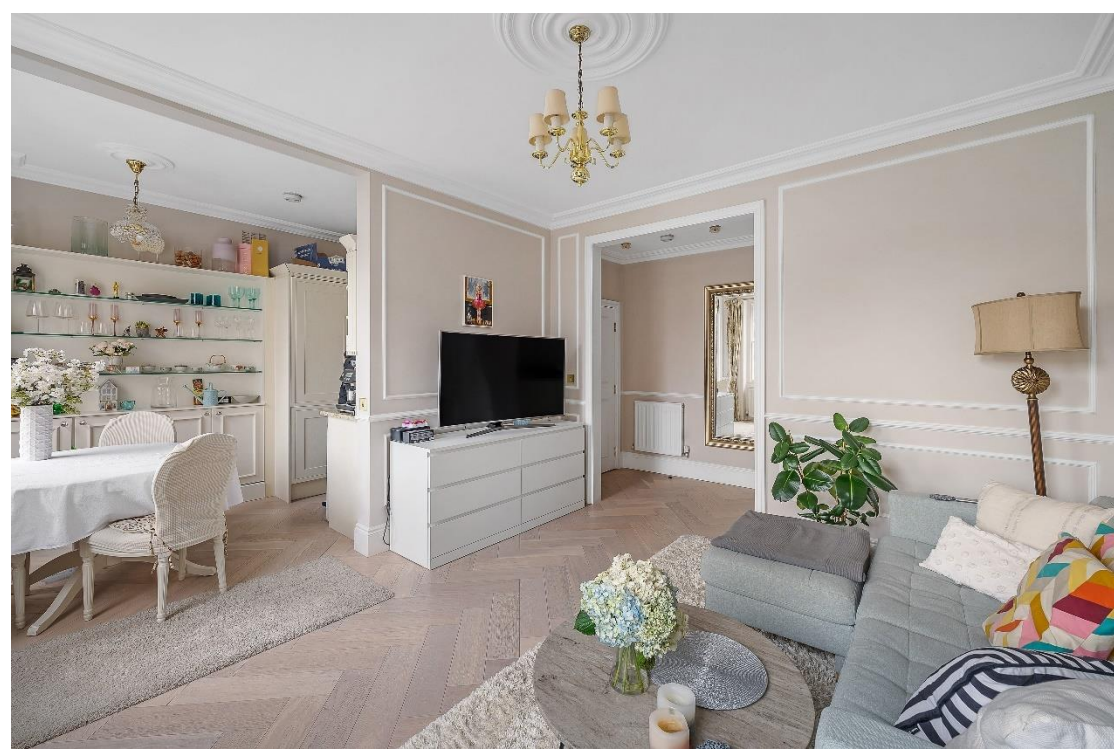
Local Authority: The Royal Borough of Kensington & Chelsea

Council tax band: Band E

Service Charge: Circa £5,000pa

Ground Rent: £500 per annum





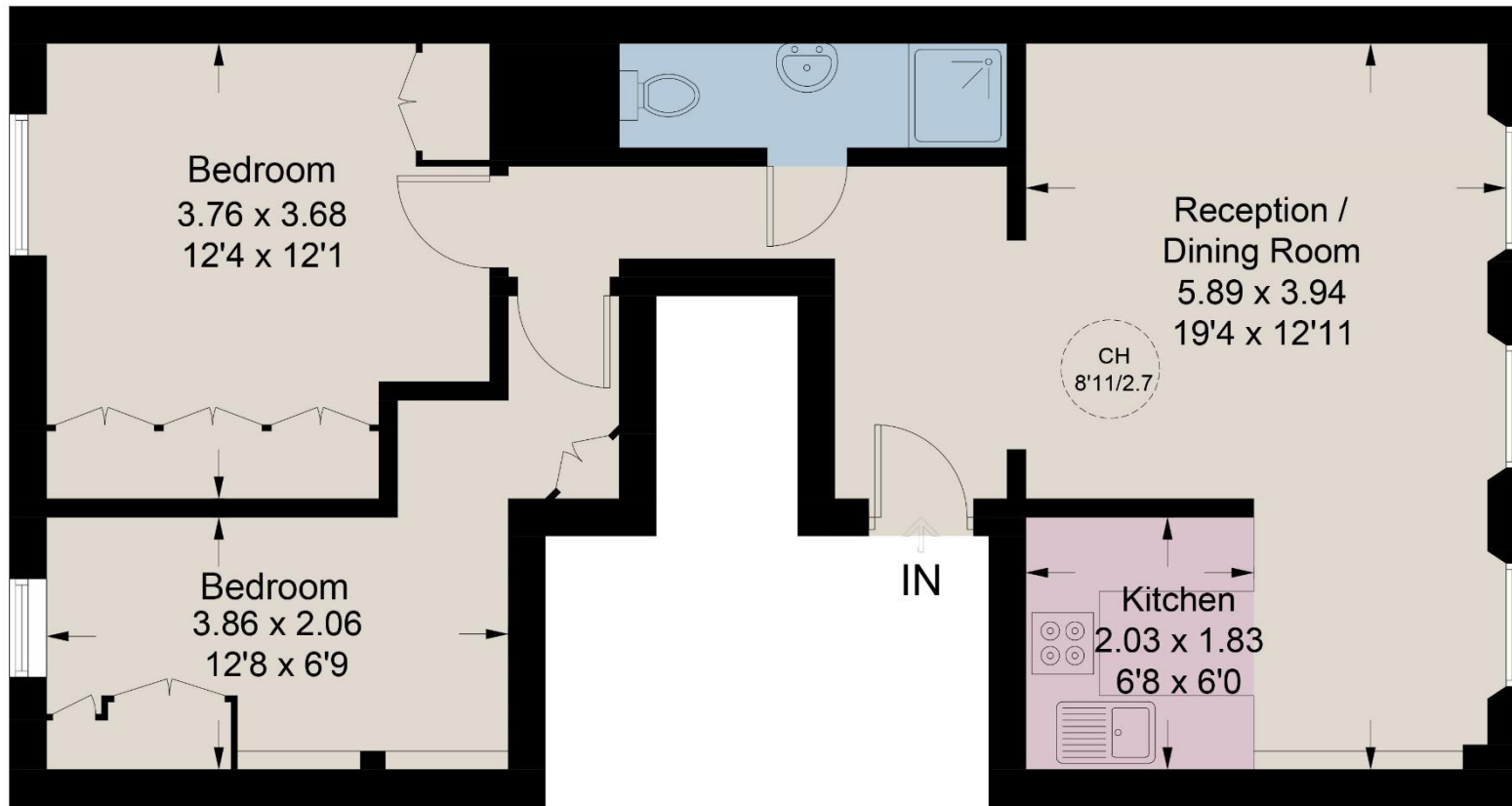
Share of Freehold | Access to Gardens | Lift | Two Bedrooms

Cornwall Gardens

Approximate Area = 57.5 sq m / 619 sq ft
Including Limited Use Area (0.4 sq m / 4 sq ft)



Energy Efficiency Rating		
	Current	Potential
Very energy efficient - lower running costs		
(92+) A		
(81-91) B		
(69-80) C	73	78
(55-68) D		
(39-54) E		
(21-38) F		
(1-20) G		
Not energy efficient - higher running costs		
England, Scotland & Wales	EU Directive 2002/91/EC	



Third Floor