



St Georges Square, UK, SW1V

£2,816.67 PER MONTH

FURNISHED

AT A GLANCE

- Two Double Bedrooms
- Large Reception
- Modern Kitchen
- Spacious Bathroom
- Split Level
- Furnished

Winkworth

for every step...



Energy Efficiency Rating		
	Current	Potential
Very energy efficient - lower running costs		
(92+) A		
(81-91) B		
(69-80) C		78
(55-68) D	64	
(39-54) E		
(21-38) F		
(1-20) G		
Not energy efficient - higher running costs		
England, Scotland & Wales	EU Directive 2002/91/EC	

ST GEORGES SQUARE, UK, SW1V

£2,816.67 PER MONTH

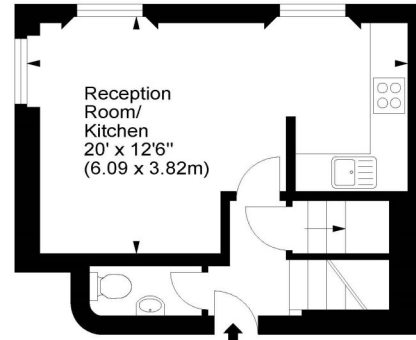
FURNISHED

Accommodation is arranged over the ground and lower ground floor and comprises a large open plan reception room with impressive ceiling height, space to dine and entertain and a modern fitted kitchen. There are two double bedrooms, a recently refurbished bathroom with underfloor heating and a generous amount of built in storage throughout.

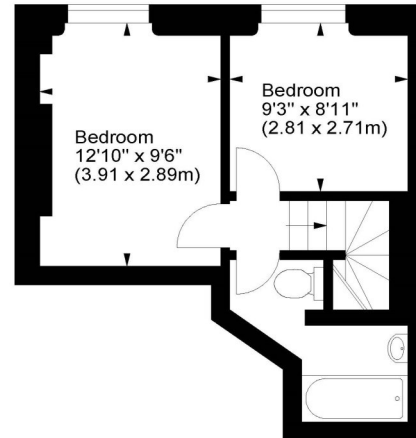
St Georges Square, SW1



Approx. Gross Internal Area
580 Sq Ft - 53.88 Sq M

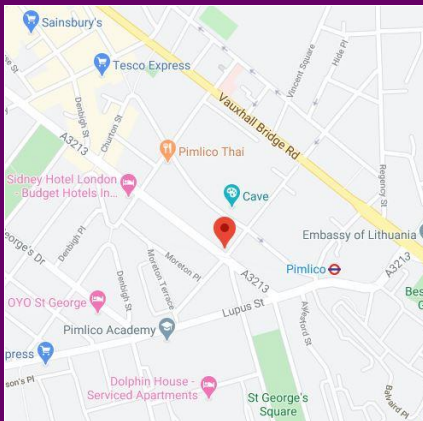


Ground Floor



Lower Ground Floor

For illustration purposes only. Not to scale.
All measurements are taken and shown at floor level.
www.r3photography.co.uk © Photography / Floor Plans / Lease Plans / EPCs



winkworth wishes to inform prospective buyers and tenants that these particulars are a guide and act as information only. All our details are given in good faith and believed to be correct at the time of printing but they don't form part of an offer or contract. No winkworth employee has authority to make or give any representation or warranty in relation to this property. All fixtures and fittings, whether fitted or not are deemed removable by the vendor unless stated otherwise and room sizes are measured between internal wall surfaces - including fireplaces.

Pimlico & Westminster | 020 7828 1786 |
pimlico@winkworth.co.uk

winkworth.co.uk/pimlico

Winkworth

for every step...