



BELSIZE AVENUE, LONDON, NW3 £1,150,000 SHARE OF FREEHOLD

A beautiful bright and spacious south facing two double bedroom fourth floor apartment (with lift) set within one of Belsize Park's best located purpose built portered blocks. Offering a light-filled reception room with excellent views of the London skyline, separate dining room, fully equipped kitchen, family bathroom and ample storage throughout, as well as un-allocated off street parking.

Hillfield Court is ideally positioned for access to the local shopping and restaurant facilities in Belsize Park, the pavement cafes of South End Green, Hampstead Heath and the further amenities available in Hampstead and Finchley Road. A two minute walk from Belsize Park Tube, (Northern Line, Zone 2) the flat is also within 0.5miles of Hampstead Heath (Overground) and Swiss Cottage (Jubilee Line, Zone 2.)

Offered chain free and with a share of freehold.

Two Double Bedrooms | Family Bathroom | Guest WC | Reception Room | Separate Dining Room | Kitchen | Off Street Parking

Winkworth

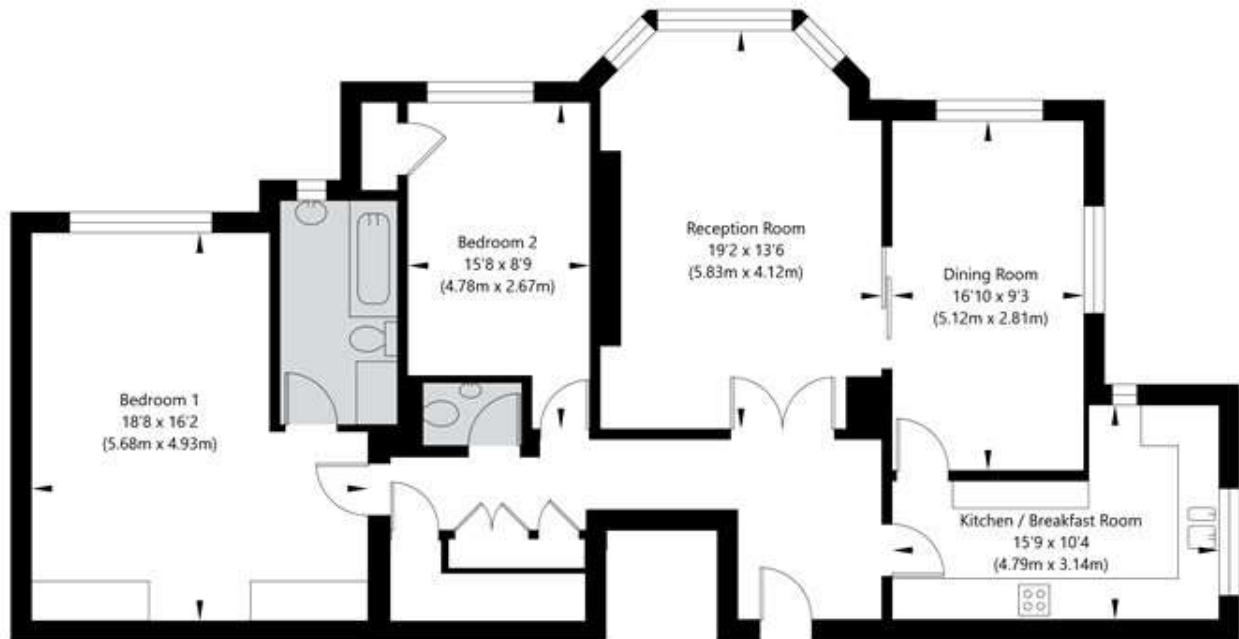
for every step...

winkworth.co.uk/west-hampstead



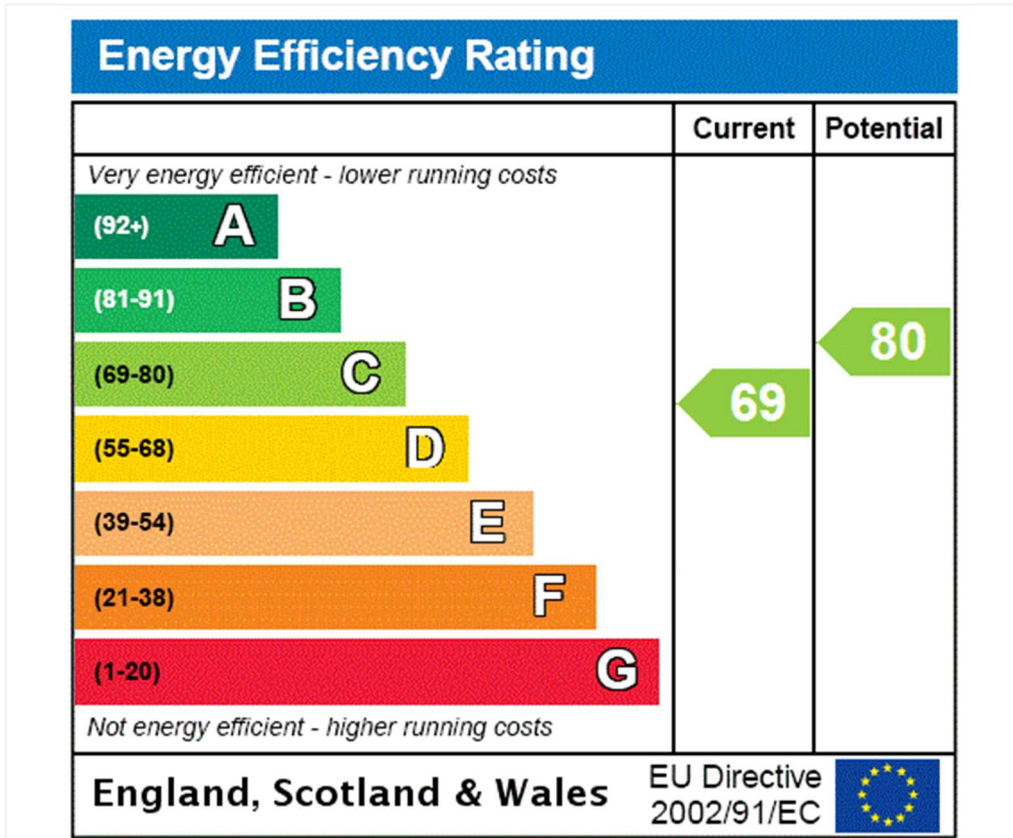
Hillfield Court, Belsize Avenue, NW3 4BE

Fourth Floor
GROSS INTERNAL FLOOR AREA
APPROX. 113.01 SQ M / 1216 SQ FT



APPROXIMATE GROSS INTERNAL FLOOR AREA 113.01 SQ M / 1216 SQ FT
THIS FLOOR PLAN IS FOR ILLUSTRATIVE PURPOSES ONLY AND
SHOULD BE USED FOR THIS PURPOSE BY PROSPECTIVE APPLICANTS AS ITS NOT TO SCALE.

(c) AMBERSHORE PIX LIMITED / PHOTO - VIDEO - FLOOR PLANS / 800 999 1577 / WWW.AMERSHOREPIX.CO.UK



Tenure: Share of Freehold
Term: Expires - 31/12/3019
Service Charge: £8800 per annum
Council Tax Band: F

Where no figures are shown, we have been unable to ascertain the information. All figures that are shown were correct at the time of printing.

Where no figures are shown, we have been unable to ascertain the information. All figures that are shown were correct at the time of printing. These particulars are not an offer or contract, nor part of one. You should not rely on statements by Winkworth in the particulars or by word of mouth or in writing "information" as being factually accurate about the property, its condition or its value. Winkworth does not have any authority to make any representations about the property, and accordingly any information given is entirely without responsibility on the part of the agents, seller(s) or lessor(s). These particulars are prepared on the basis of the information supplied by our client and are a rough guide for information only. The photographs show only certain parts of the property. We are not able to check all of the information and therefore are unable to guarantee accuracy. All interested parties are therefore advised to undertake all necessary inspections and checks that they deem appropriate. Where displayed, the square footage is taken from the floor plans, which are created by an independent supplier. These measurements are approximate and included for illustrative purposes only. The measurements may vary. Winkworth does not make any representation as to the accuracy of these measurements and you should seek to verify them for yourself. Winkworth accept no liability for any loss you may suffer if you rely on these measurements. All fixtures and fittings, whether fitted or not are deemed removable by the vendor unless stated. Any reference to alterations to, or use of, any part of the property does not mean that any necessary planning, building regulations or other consent has been obtained. Amenities and appliances have not been tested



West Hampstead | 142 West End Lane, London, NW6 1SD | 020 7483 7602 |

westhampstead@winkworth.co.uk

for every step...

winkworth.co.uk/west-hampstead

Winkworth wishes to inform prospective buyers and tenants that these particulars are a guide and act as information only. All our details are given in good faith and believed to be correct at the time of printing but they don't form part of an offer or contract. No Winkworth employee has authority to make or give any representation or warranty in relation to this property. All fixtures and fittings, whether fitted or not are deemed removable by the vendor unless stated otherwise and room sizes are measured between internal wall surfaces, including furnishings.