



KINGS AVENUE, SW4
OFFERS IN EXCESS OF: £575,000 LEASEHOLD

CHARMING GROUND FLOOR APARTMENT WITH PRIVATE PATIO IN THE HEART OF CLAPHAM

Streatham | 020 8769 6699 | streatham@winkworth.co.uk

Winkworth

for every step...

winkworth.co.uk



DESCRIPTION:

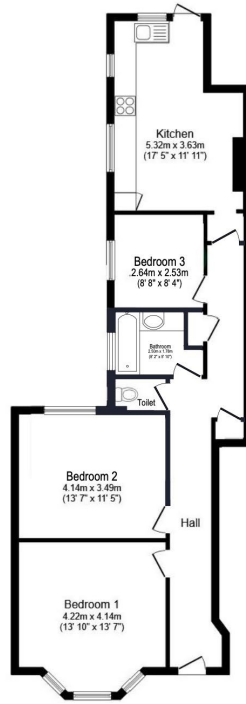
Welcome to this charming two-bedroom, ground floor apartment, perfectly situated on Kings Avenue in Clapham. Offering a blend of comfort, style, and convenience, this purpose-built residence is an ideal choice for modern living.

The property features a spacious kitchen with a dedicated dining area, making it a great space for family meals or entertaining guests. The separate living room, enhanced by beautiful bay windows, is flooded with natural light, creating a warm and welcoming atmosphere.

Both bedrooms are generously sized, offering ample space for rest and relaxation. The bathroom suite includes a two-piece setup, complemented by a separate WC for added convenience for both residents and visitors. A standout feature of this apartment is the private patio, a true rarity in city living. It provides the perfect outdoor retreat, ideal for morning coffee, unwinding after a long day, or hosting a weekend barbecue.



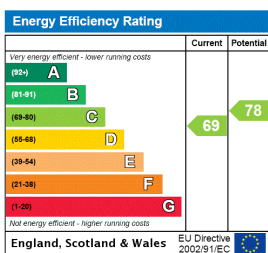




This floor plan is for illustrative purposes only. It is not drawn to scale. Any measurements, floor areas (including any total floor area), openings and orientation are approximate. No details are guaranteed, they cannot be relied upon for any purpose and they do not form part of any agreement. No liability is taken for any error, omission or misstatement. A party must rely upon its own inspection(s). Powered by www.focalagent.com



This floorplan is for illustration purposes only and is not to scale. The position and size of doors, windows, appliances and other features are approximate.



Tenure: Leasehold

Term: 160 year and 9 months

Service Charge: £1745 per annum

Council Tax Band: C

Where no figures are shown, we have been unable to ascertain the information. All figures that are shown were correct at the time of printing.

Herne Hill | 0207 501 8950 | hernehill@winkworth.co.uk

Winkworth

for every step...

winkworth.co.uk

Winkworth wishes to inform prospective buyers and tenants that these particulars are a guide and act as information only. All our details are given in good faith and believed to be correct at the time of printing but they don't form part of an offer or contract. No Winkworth employee has authority to make or give any representation or warranty in relation to this property. All fixtures and fittings, whether fitted or not are deemed removable by the vendor unless stated otherwise and room sizes are measured between internal wall surfaces, including furnishings.