



MASEFIELD COURT, POETS ROAD, LONDON, N5
£600,000 LEASEHOLD

A BEAUTIFULLY PRESENTED, THREE BEDROOM APARTMENT SET MOMENTS FROM NEWINGTON GREEN

Stoke Newington | | stokenewington@winkworth.co.uk

Winkworth



DESCRIPTION:

A spacious second-floor apartment featuring three double bedrooms, located in a well-maintained block in Highbury, N5. Covering over 800 square feet, this property is tastefully decorated and benefits from an abundance of natural light. The south-west facing reception room is bright and generously proportioned, offering access to a private balcony. The adjacent kitchen is fully equipped and provides ample storage space. Each of the three bedrooms are genuine doubles, positioned at separate ends of the apartment, ensuring privacy. A modern family bathroom completes the interior layout.

The development includes a well-kept communal garden and secure bicycle storage within a gated area.

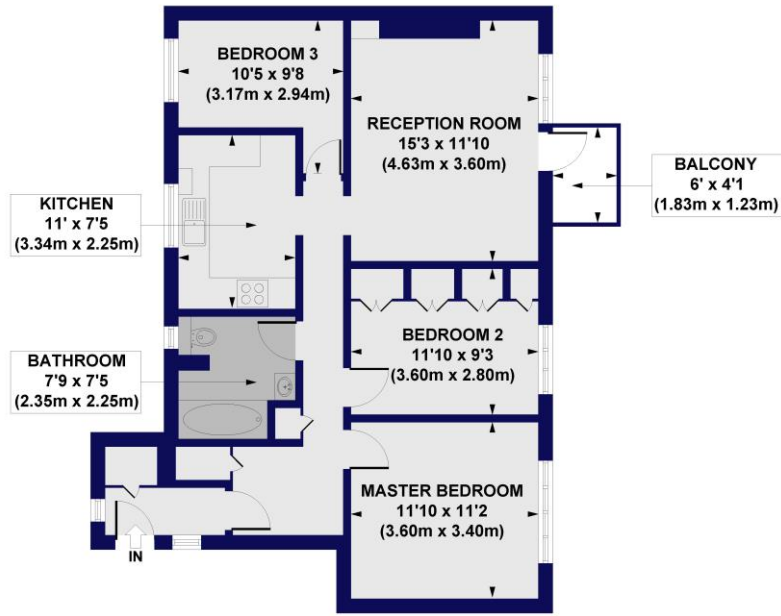
Poets Road is a quiet, tree-lined residential street in Canonbury, providing excellent access to Clissold Park. The property is also close to the popular cafes, restaurants, and bars in Newington Green, Highbury Park, and Stoke Newington Church Street. For transport, Canonbury Station (London Overground) is nearby, with additional bus routes available from Green Lanes and Newington Green. The nearest Underground station is Highbury & Islington, offering Victoria Line and National Rail services.

Winkworth



Winkworth

Masefield Court, Poets Road, N5
Approx. Gross Internal Floor Area 811 sq. ft / 75.33 sq. m

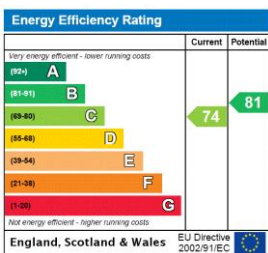


SECOND FLOOR

All measurements of walls, doors, windows, fittings and appliances, including their size and location, are shown as standard sizes and do not constitute any warranty or representation by the seller, their agent or CP Creative. Any intending purchaser must satisfy himself by inspection or otherwise as to the correctness of the information contained in these plans. This plan is for illustrative purposes only and should be used as such by any prospective purchasers.

Winkworth

This floorplan is for illustration purposes only and is not to scale. The position and size of doors, windows, appliances and other features are approximate.



Stoke Newington | | stokenewington@winkworth.co.uk



winkworth.co.uk

See things differently

Winkworth wishes to inform prospective buyers and tenants that these particulars are a guide and act as information only. All our details are given in good faith and believed to be correct at the time of printing but they don't form part of an offer or contract. No Winkworth employee has authority to make or give any representation or warranty in relation to this property. All fixtures and fittings, whether fitted or not are deemed removable by the vendor unless stated otherwise and room sizes are measured between internal wall surfaces, including furnishings.