



THORNHILL ROAD, N1
£1,200,000 LEASEHOLD

A STUNNING TWO BEDROOM PROPERTY WITH PRIVATE GARDEN IN BARNSBURY, N1.

Islington | 0207 354 2480 | islington@winkworth.co.uk

Winkworth

winkworth.co.uk

See things differently



DESCRIPTION:

A beautifully presented two double bedroom garden flat in the heart of Barnsbury. Spanning 922sqft, the property is flooded with natural light and offers well-proportioned rooms throughout. Two double bedrooms are positioned on the lower ground level, both bedrooms benefit from inbuilt storage. The family bathroom has been tastefully decorated and also includes a stunning bathtub. The reception room has an abundance of period features such as cornicing, large bay window and original fireplace. The eat-in kitchen is positioned to the rear of the raised ground floor, boasting integrated appliances and ample worktop space. The property is completed with a terrace which leads down to a private, West-facing garden.

Thornhill Road is well renowned as one of the premium streets in Barnsbury and ideally located for easy access to the City and the West End. It is set moments from the many bars, restaurants and boutique shops on Upper Street, as well as the highly regarded gastropubs of Barnsbury. The closest transport links can be found at Highbury and Islington (Victoria Line), with Caledonian Road (Piccadilly Line) also within easy reach. Overground services are located at Caledonian Road and Barnsbury whilst international transport is facilitated from Kings Cross St Pancras.

Winkworth

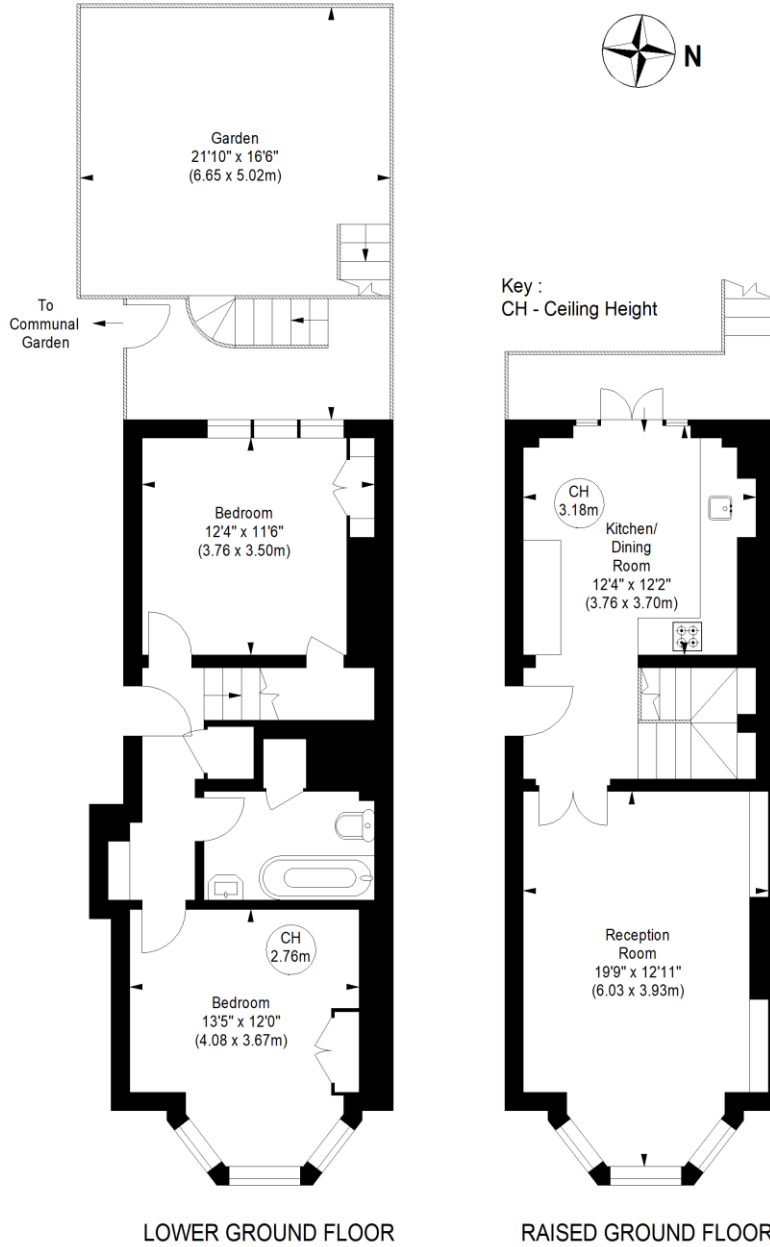


Winkworth

THORNHILL ROAD, N1

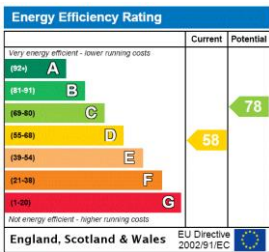
Approximate gross internal area

922 sq ft / 85.65 sq m



Not to scale, for guidance only and must not be relied upon as a statement of fact.
All measurements and areas are approximate only

This floorplan is for illustration purposes only and is not to scale. The position and size of doors, windows, appliances and other features are approximate.



Islington | 0207 354 2480 | islington@winkworth.co.uk



winkworth.co.uk

See things differently

Winkworth wishes to inform prospective buyers and tenants that these particulars are a guide and act as information only. All our details are given in good faith and believed to be correct at the time of printing but they don't form part of an offer or contract. No Winkworth employee has authority to make or give any representation or warranty in relation to this property. All fixtures and fittings, whether fitted or not are deemed removable by the vendor unless stated otherwise and room sizes are measured between internal wall surfaces, including furnishings.