



St. Faiths Road, Winchester, Hampshire, SO23 9QB

Winkworth



St. Faiths Road, Winchester, Hampshire, SO23 9QB

A period gem in a sought after location with scope to extend

This highly attractive Edwardian terraced house is situated in a most sought-after location of St Cross, close to St Catherine's Hill and less than 1 mile to the City Centre and all of its amenities. St Faiths primary School is at the end of the road and has an excellent reputation.

The welcoming entrance hall leads through to a super open plan sitting and dining room at the front of the house featuring a lovely bay window and an attractive wood burning open fireplace. Beyond this, the hall leads through to the downstairs WC and fitted kitchen which is well appointed including a double oven and space for a freestanding fridge freezer. Double doors from the kitchen allow access into the conservatory, which could benefit from some modernisation but is a perfect space for relaxing with views looking out to the garden and the lovely Irish Yew trees.

On the first floor there is an impressive principal bedroom situated at the front of the property with an attractive bay window and fireplace. A further double bedroom also with a fireplace and a large four-piece family bathroom with useful storage cupboards completes the first-floor accommodation. A loft hatch and drop-down ladder provides access to the boarded loft space.

To the rear of the property is the generously sized garden with mature shrubs and trees.



St. Faiths Road, Winchester, Hampshire, SO23 9QB

Directions

Head south on Southgate Street, away from the City centre and towards St Thomas' Passage. Turn left onto Kingsgate Road then turn right onto St Faith's Rd.

Location

St Faiths Road is one of the most desirable roads in Winchester, being positioned within the St Cross area of the city, famed for its grand period houses. It is also home to Winchester College and offers easy access to the mainline railway station (links to London Waterloo in approximately 55 minutes), with level access into the city with its high street shops, boutiques, library, coffee shops, public houses, restaurants, theatre, cinema, museums and, of course, the city's historic cathedral. The house is situated close to good local state and private schools. The lovely water meadows offer pretty walks nearby.

PROPERTY INFORMATION:

Tenure: Freehold

COUNCIL TAX: Band D. Winchester City Council.

SERVICES: Mains Gas, Electricity, Water & Drainage.

BROADBAND: Ultrafast Broadband Available. Checked on OpenReach December 2024.

MOBILE SIGNAL: Coverage With Certain Providers.

HEATING: Mains Gas Central Heating.

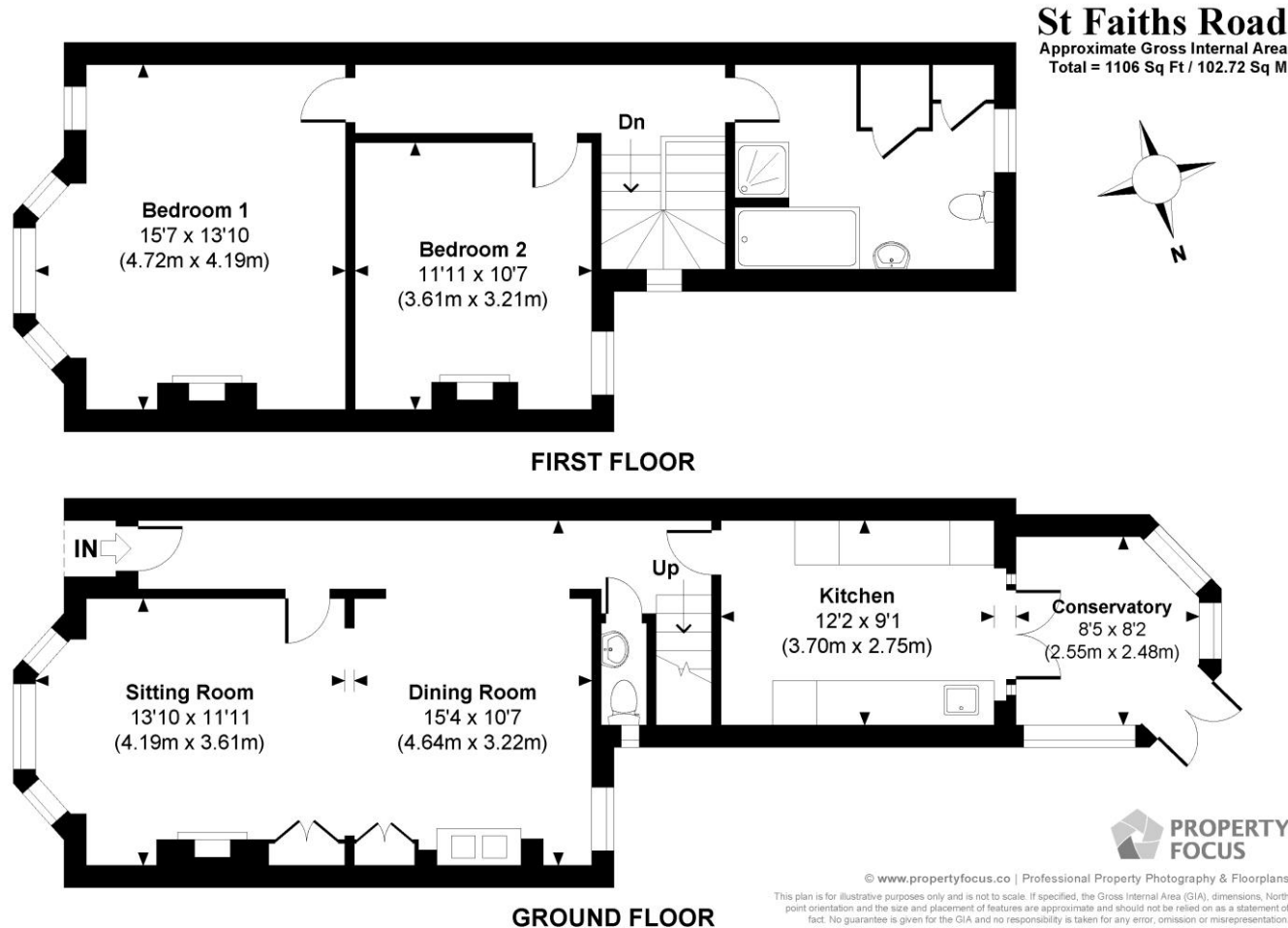
EPC RATING: D

PARKING: Permit parking - Zone V

Viewings

Strictly by appointment with Winkworth Winchester Office

[Winkworth.co.uk/winchester](https://www.winkworth.co.uk/winchester)



Winkworth Winchester

72 High Street, Winchester, SO23 9DA
01962 866 777 | winchester@winkworth.co.uk

Winkworth Country House Department

13 Charles II Street, St James's, London, SW1Y 4QU
020 7870 4878 | countryhouse@winkworth.co.uk

Winkworth

See things differently