



## **CLANRICARDE GARDENS, W2**

**£850 PER WEEK (£3,683.33 PCM) Furnished**

**A VERY SPACIOUS AND ELEGANT, 2 DOUBLE BEDROOM 2 BATHROOM FLAT, SET ON THE RAISED GROUND FLOOR OF THIS IMPRESSIVE PERIOD BUILDING, WITH WONDERFUL ENTERTAINING SPACE AND FEATURES**

2 Bedrooms, 1 Reception Room, 2 Bathrooms, Flat/Apartment, Furnished, 816  
Approx. Sq. Ft Energy Efficiency Rating: 54

**Winkworth**



### DESCRIPTION:

A very spacious and elegant, 2 double bedroom 2 bathroom flat, set on the raised ground floor of this impressive period building, with wonderful entertaining space and features such as high ceilings, original cornicing, parquet flooring, shutters and fireplaces. The property comprises - Entrance Hall, living room with semi open plan fully fitted kitchen - very spacious master bedroom to the back of the building with fantastic built-in storage and en suite bathroom - Second double bedroom and guest walk in shower room - Available furnished.

### LOCATION:

Clanricarde Gardens a quiet cul-de-sac a moment's walk from Notting Hill Gate Station, local shops restaurants and the green open spaces of Kensington Gardens.

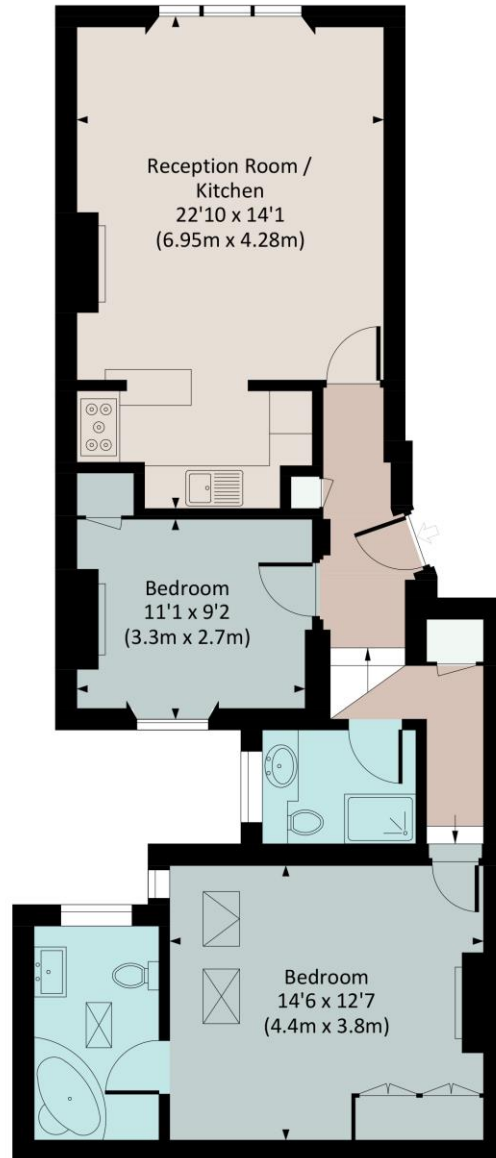
### LOCAL AUTHORITY:

City of Westminster



# CLANRICARDE GARDENS, W2

Approximate Gross Internal Area  
73.4 sq m / 790 sq ft

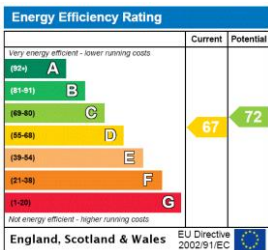


GROUND FLOOR



All measurements have been made in accordance with RICS code of Measuring Practice which are approximate only and only for illustrative purposes. For the avoidance of doubt, Dowling Jones Design shall not be liable for any reliance on these measurements. © 2020 www.dowlingjones.com 020 7610 9933

This floorplan is for illustration purposes only and is not to scale. The position and size of doors, windows, appliances and other features are approximate.



Notting Hill | 0207 727 3227 | nottinghill@winkworth.co.uk



winkworth.co.uk

See things differently

winkworth wishes to inform prospective buyers and tenants that these particulars are a guide and act as information only. All our details are given in good faith and believed to be correct at the time of printing but they don't form part of an offer or contract. No winkworth employee has authority to make or give any representation or warranty in relation to this property. All fixtures and fittings, whether fitted or not are deemed removable by the vendor unless stated otherwise and room sizes are measured between internal wall surfaces, including furnishings.