



Hanover Court, Uxbridge Road, Shepherd's Bush, W12

£400,000 Leasehold

A smart two double bedroom flat on the second floor of a 1930's Art Deco style mansion building.

Reception Room | Kitchen | 2 Bedrooms | Bathroom | Balcony | 541 Sq Ft / 50 Sq M | Council Tax Band D
| EPC Rating Band C



LOCATION

Hanover Court is on the corner of Keith Grove and Uxbridge Road, within easy reach of the area's diverse array of shops and restaurants, there are also several pubs and coffee shops close by. The outside spaces of both Wormholt and Ravenscourt Parks are just a short distance away, whilst superb transport links give easy access both in to and out of Central London. A number of well regarded schools are also close by.

DESCRIPTION

Offered in good order throughout, accommodation comprises entrance hall, two double bedrooms, kitchen, bathroom, reception room and balcony. A perfect first time buy.

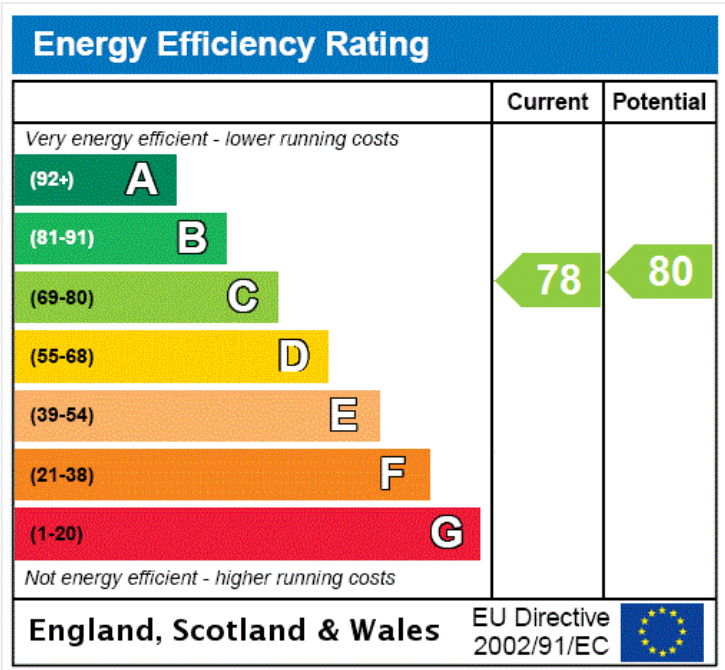


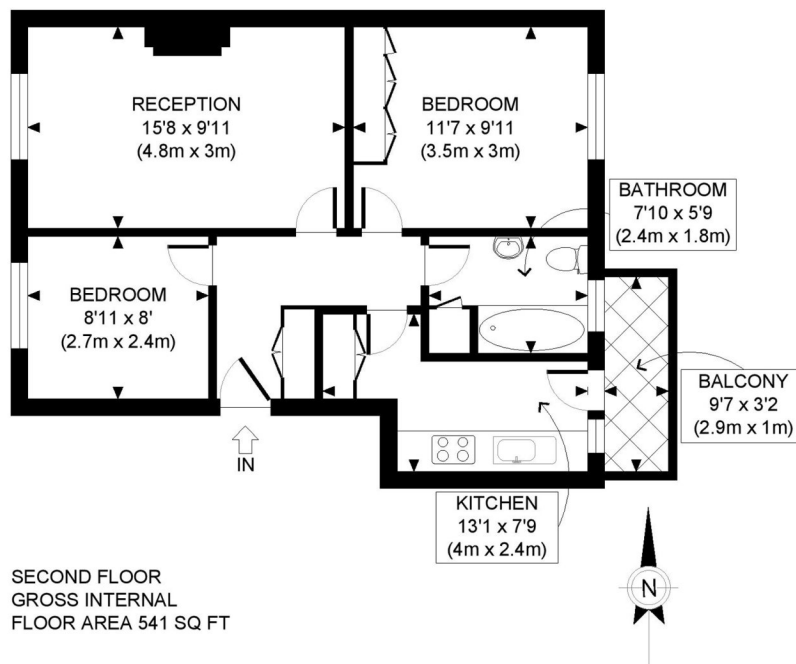


LOCAL AUTHORITY
Hammersmith & Fulham

TENURE
Leasehold.

PRICE: £400,000 Leasehold





APPROX. GROSS INTERNAL FLOOR AREA: 541 SQ FT/ 50 SQM

PROPERTY PHOTO PLANS .CO.UK

ONE STOP SHOP FOR PROPERTY MARKETING

This plan is for illustrative purposes only and should be used as such by any prospective client. Whilst every attempt has been made to ensure the accuracy of the Floor Plan contained here, measurements of the doors, windows, rooms and any other items are approximate and no responsibility is taken for any errors, omissions, or misstatement. The services, systems and appliances shown have not been tested and no guarantee as to the operability or efficiency can be given.

The displayed square footage is taken from the floor plans with measurements created using the Royal Institute of Chartered Surveyors' Code of Practice for Measuring. These measurements are approximate and included for illustrative purposes only. Winkworth does not make any representation as to the accuracy of these measurements and you should seek to verify them for yourself. Winkworth accept no liability for any loss you may suffer if you rely on these measurements.

Shepherds Bush | 020 8735 3266 | shepherdsbush@winkworth.co.uk

Winkworth

for every step...

Under the Property Misdescriptions Act 1991, these Particulars are a guide and act as information only. All details are given in good faith and are believed to be correct at time of printing. Winkworth give no representation as to their accuracy and potential purchasers or tenants must satisfy themselves by inspection or otherwise as to their correctness. No employee of Winkworth has authority to make or give any representation or warranty in relation to this property.