



TREHURST STREET, LONDON, E5  
**'OFFERS IN EXCESS OF' £980,000 FREEHOLD**

**A FOUR BEDROOM PERIOD HOUSE WITH POTENTIAL TO  
EXTEND STPP CLOSE TO HACKNEY MARSHES AND  
HOMERTON STATION**

Hackney | 020 8986 4216 | [hackney@winkworth.co.uk](mailto:hackney@winkworth.co.uk)

**Winkworth**

[winkworth.co.uk](http://winkworth.co.uk)

See things differently



## DESCRIPTION:

This 4-bedroom terraced period house boasting approximately 1139 sq ft of living space on a quiet street in E5. Stepping through the front door, you are greeted by a generously sized reception room on the ground floor, a large eat-in kitchen perfect for entertaining, also complemented by a convenient guest WC. Also accessible from the kitchen is the private garden. Ascending to the first floor, there are three bedrooms, with the master bedroom benefiting from two windows, allowing ample natural light to filter through. A well-appointed family bathroom and a separate WC complete the upper level. This property also holds exciting potential, with the prospect of expanding into the loft and a side return, subject to planning permission.

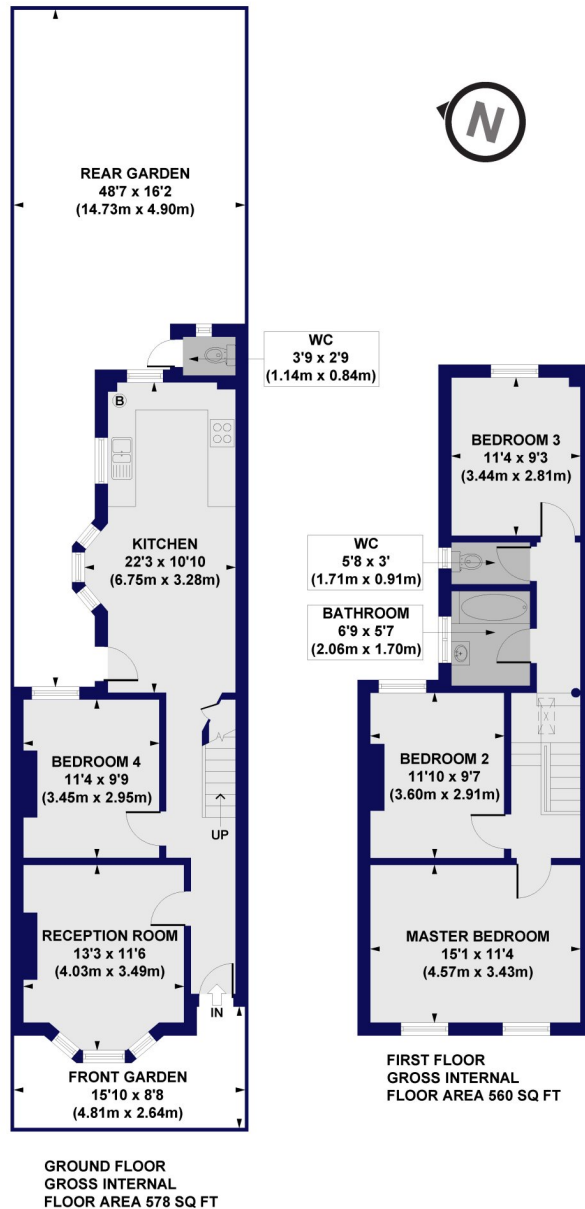
Situated in the heart of a vibrant community, Trehurst Street enjoys proximity to an array of local amenities, including shops, cafes, and schools. The area is well-connected, with reliable transport links ensuring easy access to the wider city. Whether it's a leisurely stroll in the nearby parks or a short commute to the city center, this residence provides an ideal balance of comfort and convenience.

**Winkworth**



**Winkworth**

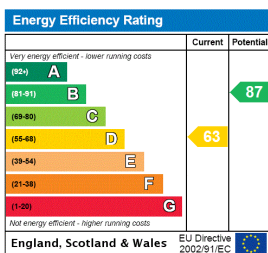
Trehurst Street, E5  
 Approx. Gross Internal Floor Area 1139 sq. ft / 105.80 sq. m



All measurements of walls, doors, windows, fittings and appliances, including their size and location, are shown as standard sizes and do not constitute any warranty or representation by the seller, their agent or CP Creative. Any intending purchaser must satisfy himself by inspection or otherwise as to the correctness of the information contained in these plans. This plan is for illustrative purposes only and should be used as such by any prospective purchasers.

**Winkworth**

This floorplan is for illustration purposes only and is not to scale. The position and size of doors, windows, appliances and other features are approximate.



Hackney | 020 8986 4216 | hackney@winkworth.co.uk



winkworth.co.uk

See things differently

Winkworth wishes to inform prospective buyers and tenants that these particulars are a guide and act as information only. All our details are given in good faith and believed to be correct at the time of printing but they don't form part of an offer or contract. No Winkworth employee has authority to make or give any representation or warranty in relation to this property. All fixtures and fittings, whether fitted or not are deemed removable by the vendor unless stated otherwise and room sizes are measured between internal wall surfaces, including furnishings.