



DIGBY CRESCENT, LONDON, N4
£750,000 SHARE OF FREEHOLD

STUNNING 3 BEDROOM PERIOD CONVERSION ON A QUIET TREE LINED STREET

Hackney | 020 8986 4216 | hackney@winkworth.co.uk

Winkworth

winkworth.co.uk

See things differently



DESCRIPTION:

This spacious and well-finished 3 bedroom split-level flat, located just moments away from Clissold Park, is situated over the top two floors of a stunning double-fronted Victorian terraced house. Standing at just over 1000sqft, it benefits from an abundance of natural light and well-proportioned double bedrooms of which the master houses an en-suite wet room. The upstairs open-plan living area provides comfortable space for entertaining, and features an eye-catching exposed brick wall.

Digby Crescent is a perfectly located tree-lined street with a community feel. It is situated a short distance from the prestigious Highbury Barn as well as Blackstock Road in one direction and Stoke Newington Church Street in the other, with their wide array of shops, restaurants and boutique bars.

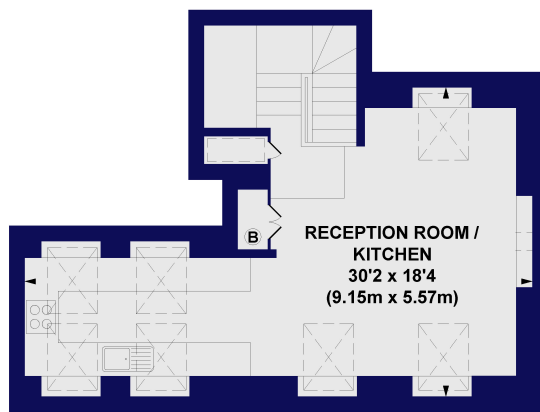
Transport links are well serviced with Arsenal (Piccadilly line) and Finsbury Park (Piccadilly and Victoria lines, and mainline trains) stations both a short walk away, providing easy access to the West End and the City. There are also great bus links nearby from Blackstock Road and Green Lanes.

Winkworth

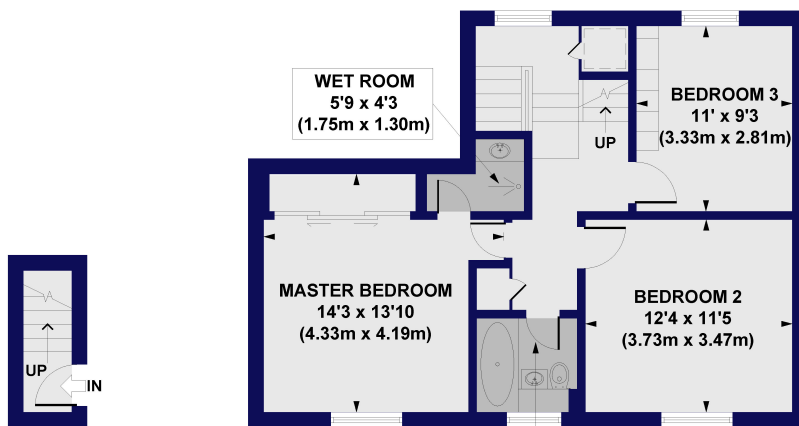


Winkworth

Digby Crescent, N4
Approx. Gross Internal Floor Area 1104 sq. ft / 102.57 sq. m



THIRD FLOOR
GROSS INTERNAL
FLOOR AREA 476 SQ FT



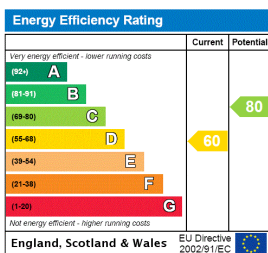
FIRST FLOOR
GROSS INTERNAL
FLOOR AREA 24 SQ FT

SECOND FLOOR
GROSS INTERNAL
FLOOR AREA 604 SQ FT

All measurements of walls, doors, windows, fittings and appliances, including their size and location, are shown as standard sizes and do not constitute any warranty or representation by the seller, their agent or CP Creative. Any intending purchaser must satisfy himself by inspection or otherwise as to the correctness of the information contained in these plans. This plan is for illustrative purposes only and should be used as such by any prospective purchasers.

Winkworth

This floorplan is for illustration purposes only and is not to scale. The position and size of doors, windows, appliances and other features are approximate.



Hackney | 020 8986 4216 | hackney@winkworth.co.uk



winkworth.co.uk

See things differently

Winkworth wishes to inform prospective buyers and tenants that these particulars are a guide and act as information only. All our details are given in good faith and believed to be correct at the time of printing but they don't form part of an offer or contract. No Winkworth employee has authority to make or give any representation or warranty in relation to this property. All fixtures and fittings, whether fitted or not are deemed removable by the vendor unless stated otherwise and room sizes are measured between internal wall surfaces, including furnishings.